



**Metro**

Los Angeles County  
Metropolitan Transportation Authority

One Gateway Plaza  
Los Angeles, CA 90012-2952

213.922.2000 Tel  
metro.net

**January 17, 2020**

**TO: BOARD OF DIRECTORS**

**THROUGH: PHILLIP A. WASHINGTON** *PAW*  
**CHIEF EXECUTIVE OFFICER**

**FROM: RICHARD CLARKE** *RFC*  
**CHIEF PROGRAM MANAGEMENT OFFICER**

**SAMEH GHALY** *SG*  
**SR. EXECUTIVE OFFICER, PROGRAM MANAGEMENT**

**SUBJECT: WESTSIDE PURPLE LINE EXTENSION SECTION 2**  
**UPDATE ON GEOPHYSICAL INVESTIGATIONS UNDER**  
**BEVERLY HILLS HIGH SCHOOL**

**ISSUE**

On January 9, 2020, Metro's design/builder for the Westside Purple Line Extension Section 2 Project (WPLE2), Tutor-Perini/O&G Industries (TPOG), provided Metro with written notice of three alleged differing site conditions, or magnetic anomalies, which were identified by geophysical investigations recently performed under the Beverly Hills High School (BHHS) campus. The locations of the magnetic anomalies identified by TPOG, are shown in Appendix A.

**BACKGROUND**

In accordance with mitigation measure CON-53 in the Final Environmental Impact Statement/Final Environmental Impact Report (FEIS/FEIR), the WPLE2 design/build contract included a requirement to perform geophysical investigations under the BHHS campus via horizontal directional drill holes along the alignment of both tunnels.

The geophysical investigations which identified the magnetic anomalies were performed by TPOG under a right-of-entry permit that Metro staff negotiated with the Beverly Hills Unified School District (BHUSD) prior to obtaining the rights to a subsurface easement to facilitate tunnel construction. In accordance with the

permit, Metro must deliver results of the investigations (draft or final) to BHUSD within ten days of when the results become available to Metro. Drilling started on October 18, 2019 and was completed on December 10, 2019. Geophysical investigations in the boreholes were completed on December 20, 2019. Metro received TPOG's report on the investigations on January 8, 2020.

On January 13, 2020, BHUSD notified Metro that evidence of drilling fluid was found at a second location on the campus, between Metro's sound wall and the portable classrooms adjacent to the project's staging yard at 1950 Century Park East. The first location where drilling fluid was observed on the campus near BHHS Building B1 was discussed in a Board Box dated December 11, 2019.

On January 15, 2020, BHUSD informed Metro that it directed its contractor, ProWest, to stop all construction at Building B1 as part of the B1-B2 Modernization Project on December 11, 2019, and that delay costs are being incurred. Metro staff and County Counsel discussed with BHUSD's attorney via teleconference on January 16, 2020 the results of the geophysical investigations and learned that BHUSD has confirmed the presence of what it believes is an historic oil well under the sidewalk on the east side of Building B1. BHUSD is currently waiting for a report from a geotechnical engineer before it resumes construction work on its Modernization Project at Building B1.

## **DISCUSSION**

Three magnetic anomalies (A, B and C) are identified in the TPOG letter dated January 9, 2020 and shown in Appendix A. The accuracy of the location of each anomaly is estimated to be  $\pm 5$  feet in all directions. TPOG states in its written notice that Anomaly C is not well defined, and its exact location cannot be determined due to a lack of data and interference from the tunnel access shaft wall. However, TPOG opines that Anomalies A and B may be steel cased oil wells, even though they do not match the mapped locations of any known oil wells in the area.

## **NEXT STEPS**

- Coordinate additional site investigations with BHUSD to determine the exact location of the magnetic anomalies.
- Confirm through further investigation the foundation of BHHS Building B1 has been unaffected by the drilling mud surface return and BHUSD may resume construction work on its Modernization Project at Building B1.
- Determine if the alignment of WPLE2 tunnels can be adjusted slightly to avoid the anomalies, without any impacts to future operational requirements or modifications to real estate requirements.
- If the anomalies are proven to be historic oil wells that are not abandoned to current standards, and the tunnel alignment cannot be adjusted to avoid

them, develop a plan and schedule for the removal of the magnetic anomalies and coordinate with the California Geologic Energy Management Division (CalGEM) and BHUSD.

- If the anomalies are not oil wells, develop a plan to remove the interfering objects during construction.
- Determine the potential impacts of the alleged differing site conditions on the project budget, schedule and TPOG contract, if any.

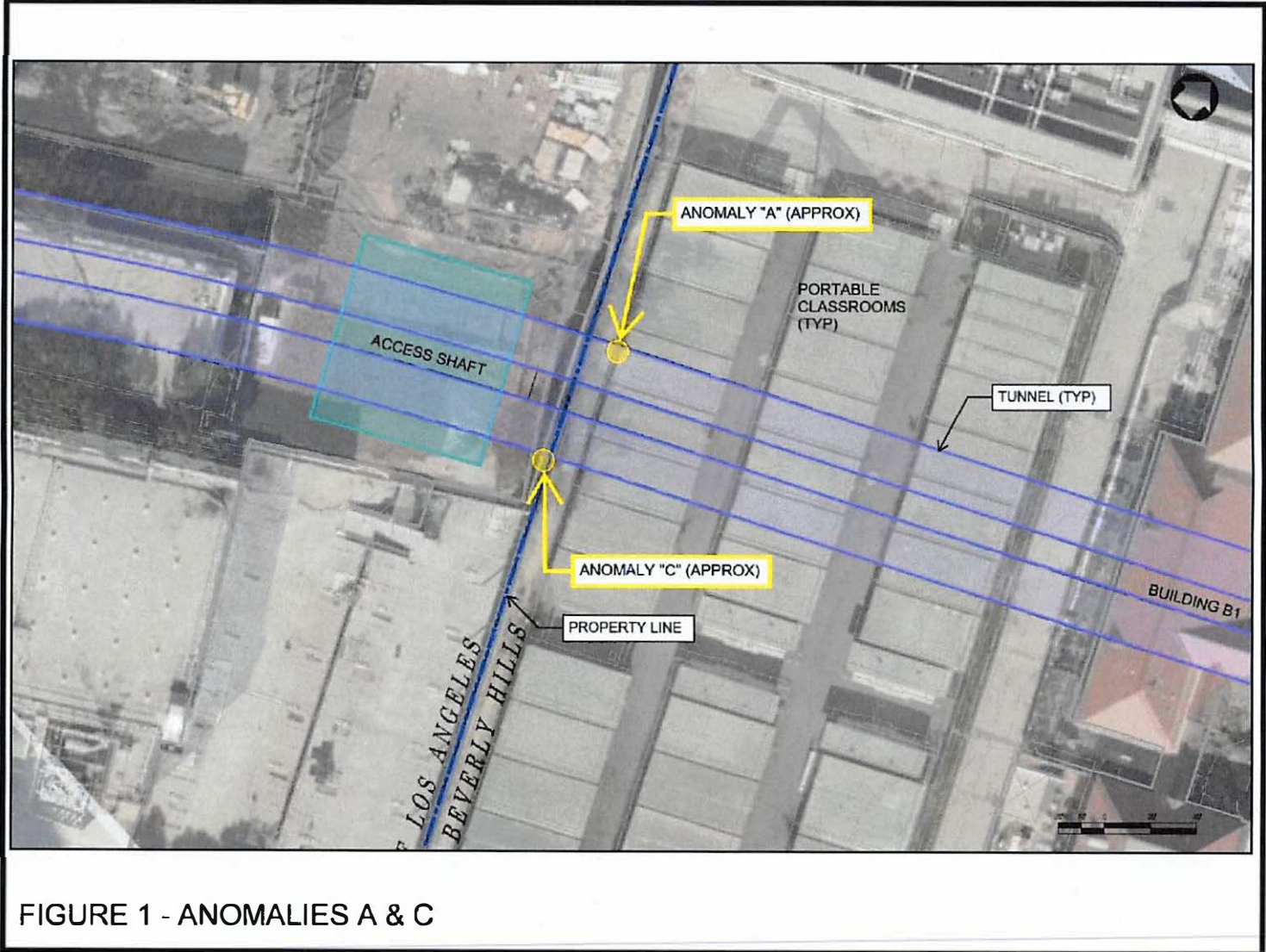


FIGURE 1 - ANOMALIES A & C