



Metro

MARCH 7, 2012

TO: BOARD OF DIRECTORS

THROUGH: ARTHUR T. LEAHY *by per*
CHIEF EXECUTIVE OFFICER

FROM: MARTHA WELBORNE, FAIA *WWW*
EXECUTIVE DIRECTOR, COUNTYWIDE PLANNING

SUBJECT: ORGANIZATION OF PLANNING DEPARTMENT

ISSUE

At the Finance & Budget Committee held on January 18, 2012, Director Fasana asked for a report back on the organizational structure of the Countywide Planning Department. This Board Box describes the current structure of the Countywide Planning Department and how it differs from the past structure.

BACKGROUND

Since the arrival of a new Chief Planning Officer, Martha Welborne, in June 2010, there have been some changes in staff assignments and focus. The purpose of these changes has been to: 1) organize teams of staff around the twelve accelerated Measure R transit projects rather than purely based on geographic areas; and 2) respond to new initiatives approved by the Board and assigned to the Planning Department. In addition, the CEO created a new unit in 2010 entitled Highway Project Delivery, headed by Doug Failing, which shifted approximately 30 staff from Planning into the Highway program.

Historically, there have been four direct reports to the Chief Planning Officer, as can be seen in Attachment A. The Long Range Planning & Coordination unit was led by Executive Officer Brad McAllester, the Programming & Policy Analysis unit was led by Executive Officer Frank Flores, and there were two Transportation Development & Implementation (TDI) units, with one led by Executive Officer Renee Berlin and one led by Executive Officer Diego Cardoso.

Of these four direct report units, the Long Range Planning and Programming & Policy Analysis Units remain largely the same with a few changes in staff through natural attrition and replacements. Concerning the second two direct report units, some

changes in assignments have been made and the focus of these units has been placed more directly on the Measure R projects. Finally, one new direct report unit was created. Attachment B shows the current structure of Countywide Planning. These changes are described below.

Transportation Development and Implementation Units

With the direction from the Board of Directors to proceed with planning the twelve Measure R transit projects at the pace of the 30/10 Initiative, rather than at the LRTP pace, staff in the TDI units were assigned to work on specific Measure R projects. The staff had formerly been assigned to six geographic area teams, and in these areas they worked on both transit and highway projects as well as the Call for Projects, and other tasks. Because of the familiarity of the area team staff with the transit corridors in the six geographic areas, the staff have, by and large, continued to work in the same geographic area, although their focus is now on the Measure R transit projects. Staff in these units also continue to work on Call for Projects efforts as well as other initiatives, but all highway projects have moved to the Highway Project Delivery Department.

Strategic Initiatives Unit

A fifth direct report was added under the Chief Planning Officer with the arrival of Executive Officer Cal Hollis in May 2011. Mr. Hollis heads the newly-created Strategic Initiatives unit. This unit is charged with leading a range of new initiatives that the Board has requested that the Planning Department undertake, including the master plan of Union Station, and the creation of a grant program to support cities, COGs and JPAs with Transit Oriented Development programs. This unit is also coordinating the negotiation of the 3% local match for the Measure R projects, and, among other tasks, works with the Joint Development department on a number of development projects on property owned by the MTA.

NEXT STEPS

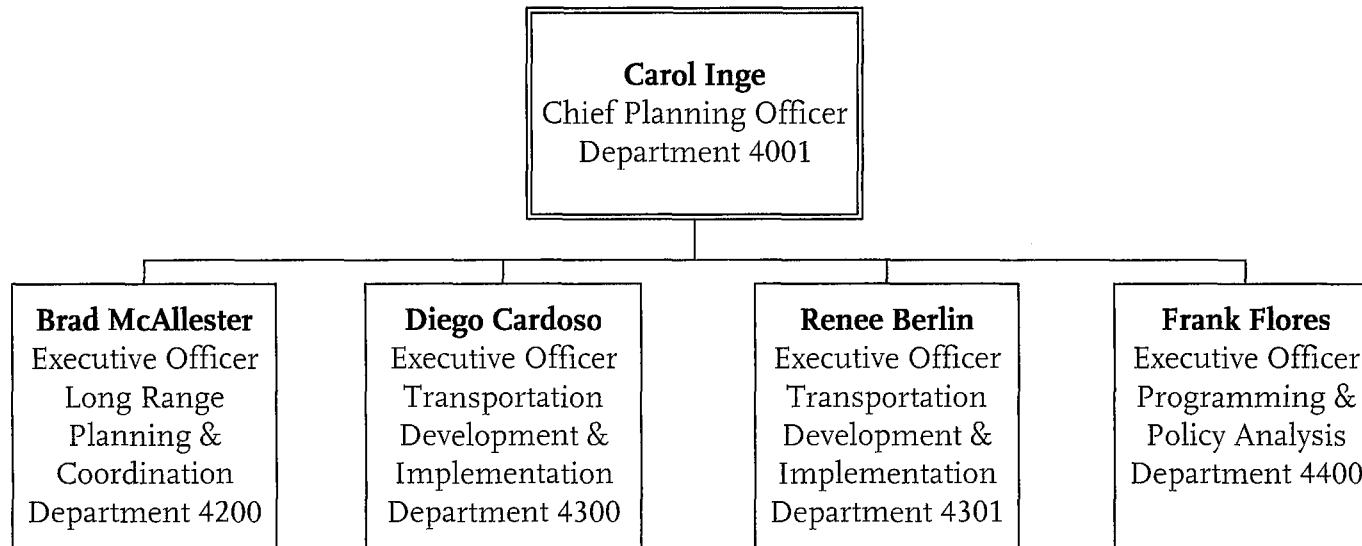
The organization of the Countywide Planning Department and the assignments given to specific staff members will continue to evolve and shift if and when the priorities of the agency change or as new assignments are given to the department.

Attachment A: FY09 Organization Chart for Countywide Planning

Attachment B: FY12 Organization Chart for Countywide Planning

FY09

Countywide Planning & Development



FY12 Countywide Planning

