



April 5, 1996

Los Angeles County
 Metropolitan
 Transportation
 Authority

TO: BOARD OF DIRECTORS
 FROM: JOSEPH E. DREW
 SUBJECT: URBAN BEAUTIFICATION ARCHITECTURAL AWARD

One Gateway Plaza
 Los Angeles, CA
 90012
 213.922.6000

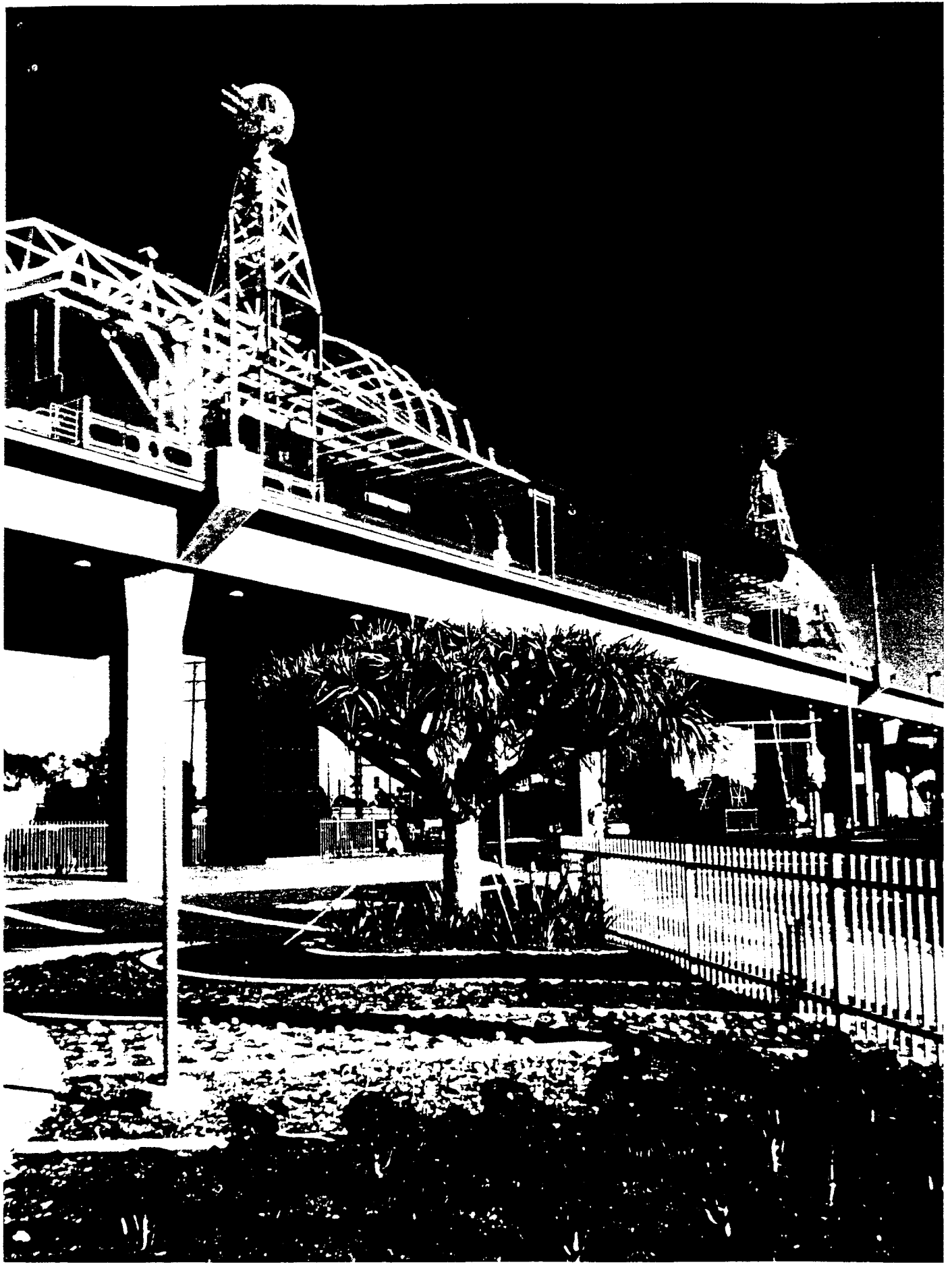
On April 1st the Los Angeles Business Council bestowed the Urban Beautification Award for best *Public Use Civic Project* on the Metro Green Line Marine Station! Artist Carl Cheng and Escudero-Fribourg Architects combined underwater and outerspace themes to reflect two entities that dominate the region: the seacoast and the aerospace industry.

Mailing Address:
 P.O. Box 194
 Los Angeles, CA 90053

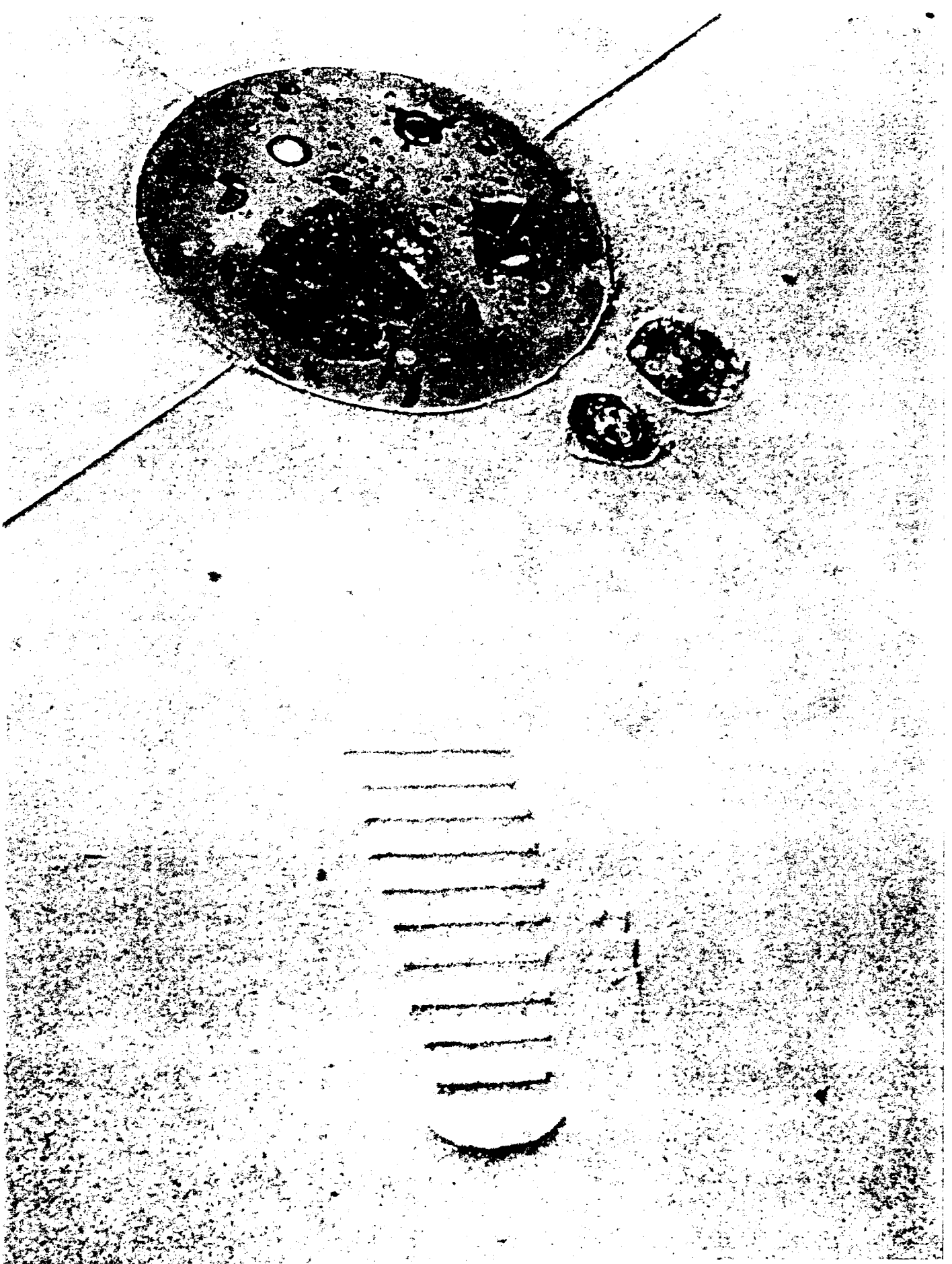
The Marine Station is one of five stations on the El Segundo Segment of the Metro Green Line. The station design passes from an imaginary sea bottom on the lower level and moves upward into space to the platform level. Video monitors and interactive fiber optics designed by the artist reference coastal and aerospace motifs. The artist also integrated authentic TRW satellite components into the station design.

This latest award adds to an extensive list of honors for Metro Art projects. I am very pleased that so many gifted and talented artists are being recognized for their contributions. I am especially proud of the Metro Art staff, who under the direction of Maya Emsden continue to perform at an exceptional level.

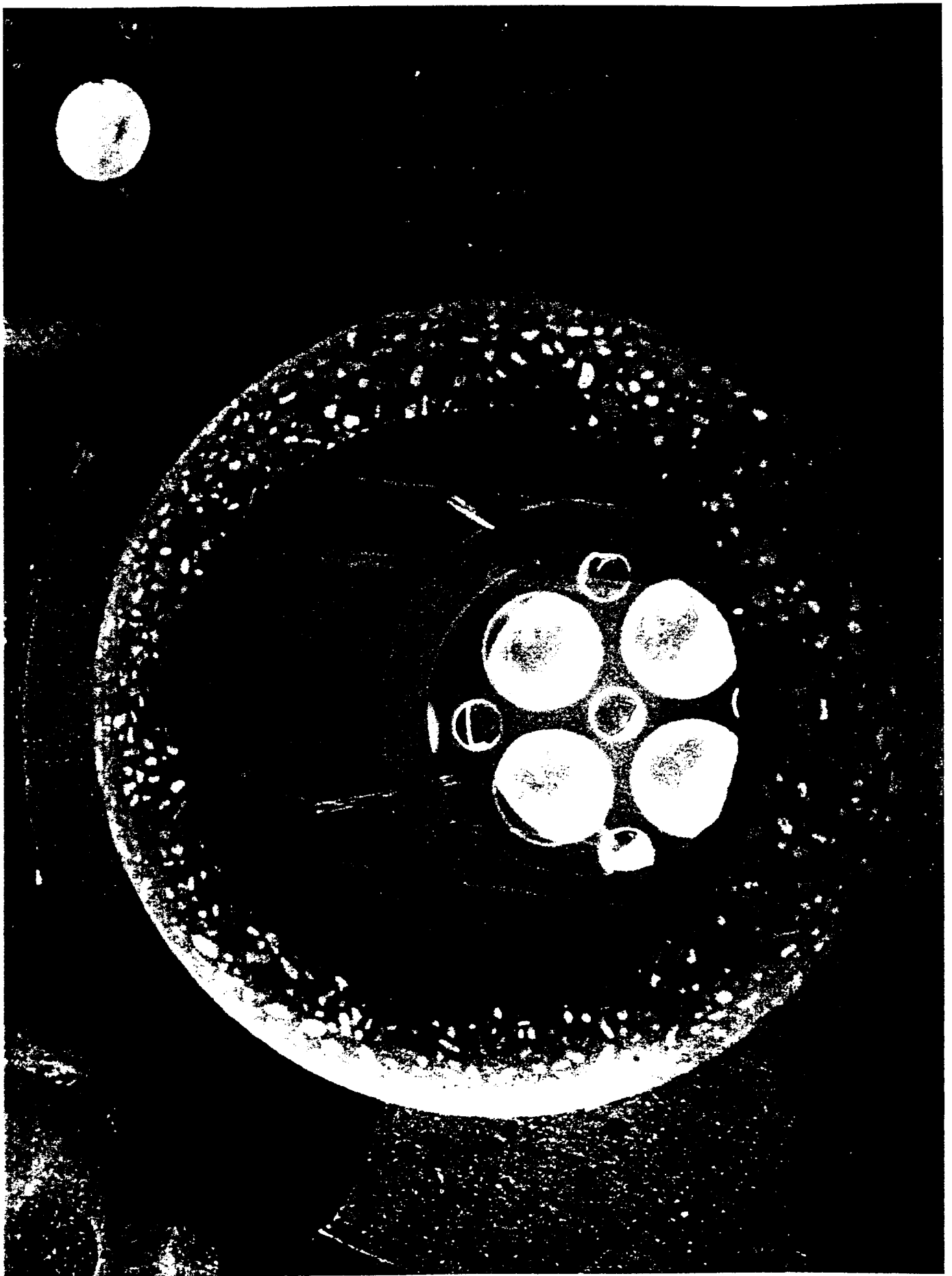
ll:c:winword\bbformaya



Landscaping, sculptural towers and a giant blue wave canopy are among the station's numerous art elements.



Imprints of man's first steps on the moon are incorporated into the station paving.



Cast in the canopy's blue glow, this "viewing tube" allows customers a kaleidoscopic view of traffic below.