

PROJECT CLOSEOUT STATUS

Metro Red Line **Segments 2 & 3 Facilities and Systems** & **Professional Services Contracts** (Period Ending December 31, 2001)

February 20, 2002

17

PROJECT CLOSEOUT STATUS

- **Purpose of Presentation**

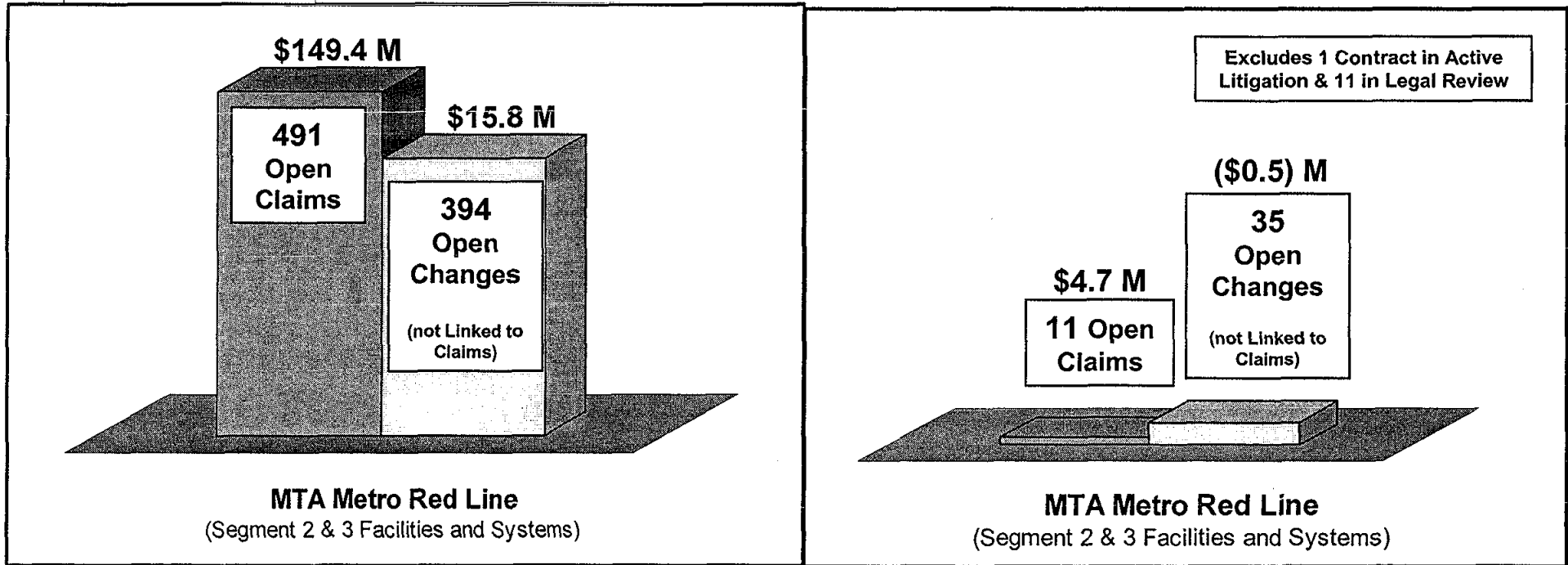
- **Report Closeout Status**

- **Summary of Claim Resolution**
- **Summary of Change Resolution**
- **Summary of Facilities & Systems Contracts Closed Out (rename)**
- **Professional Services Close Out Status**

OPEN ITEM COUNT – 71 Contracts

PAST

PRESENT

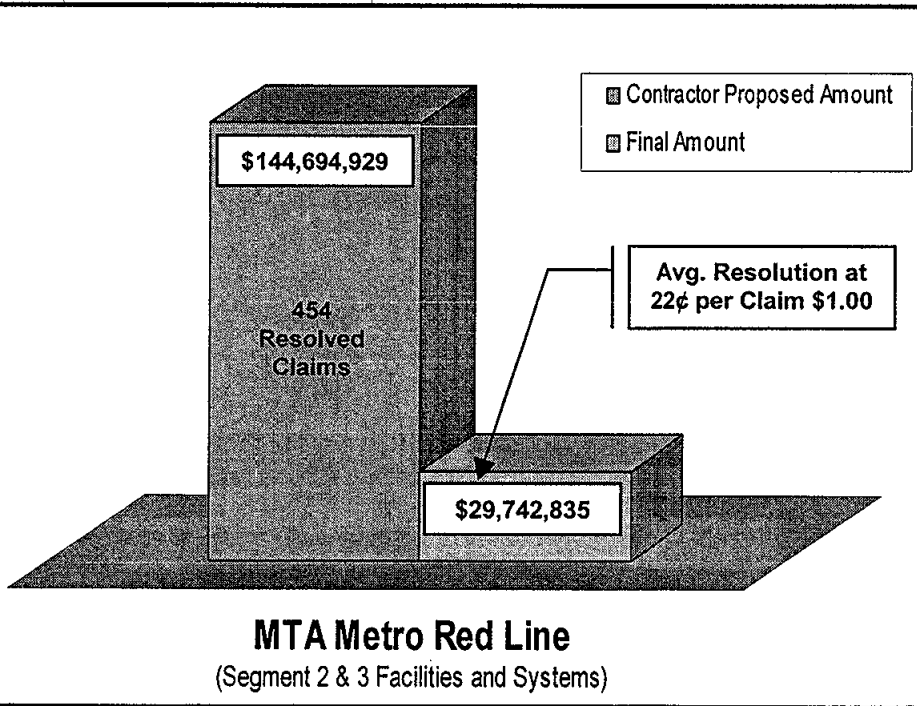


March 1, 2000

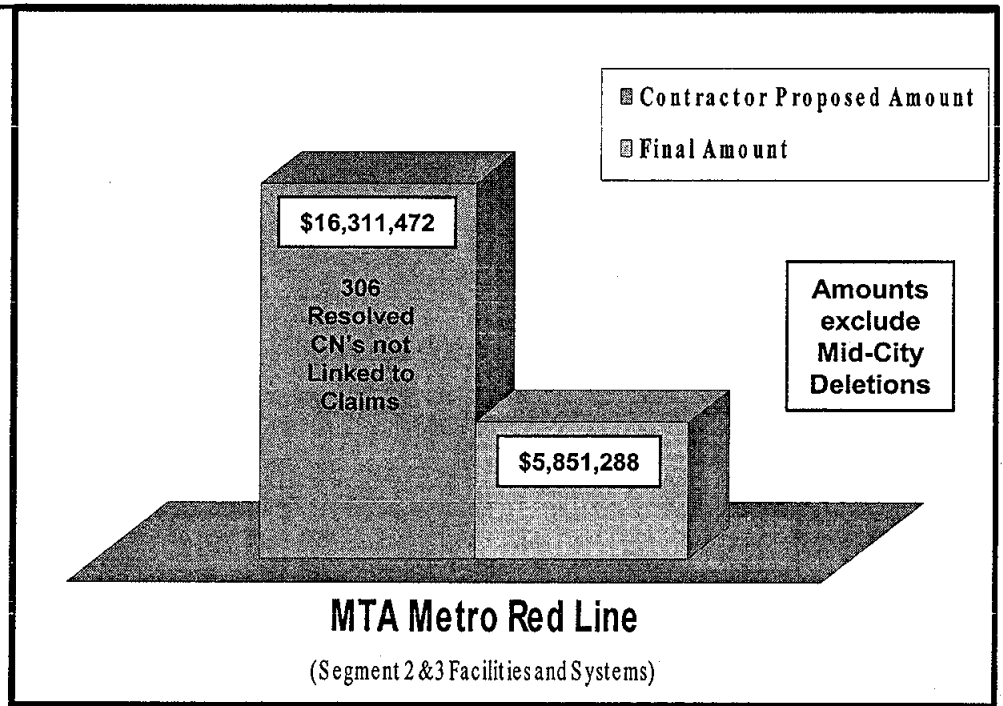
January 1, 2002

CLOSEOUT TEAM RESULTS

Claim Resolution



Change Resolution



PROJECT CLOSEOUT STATUS

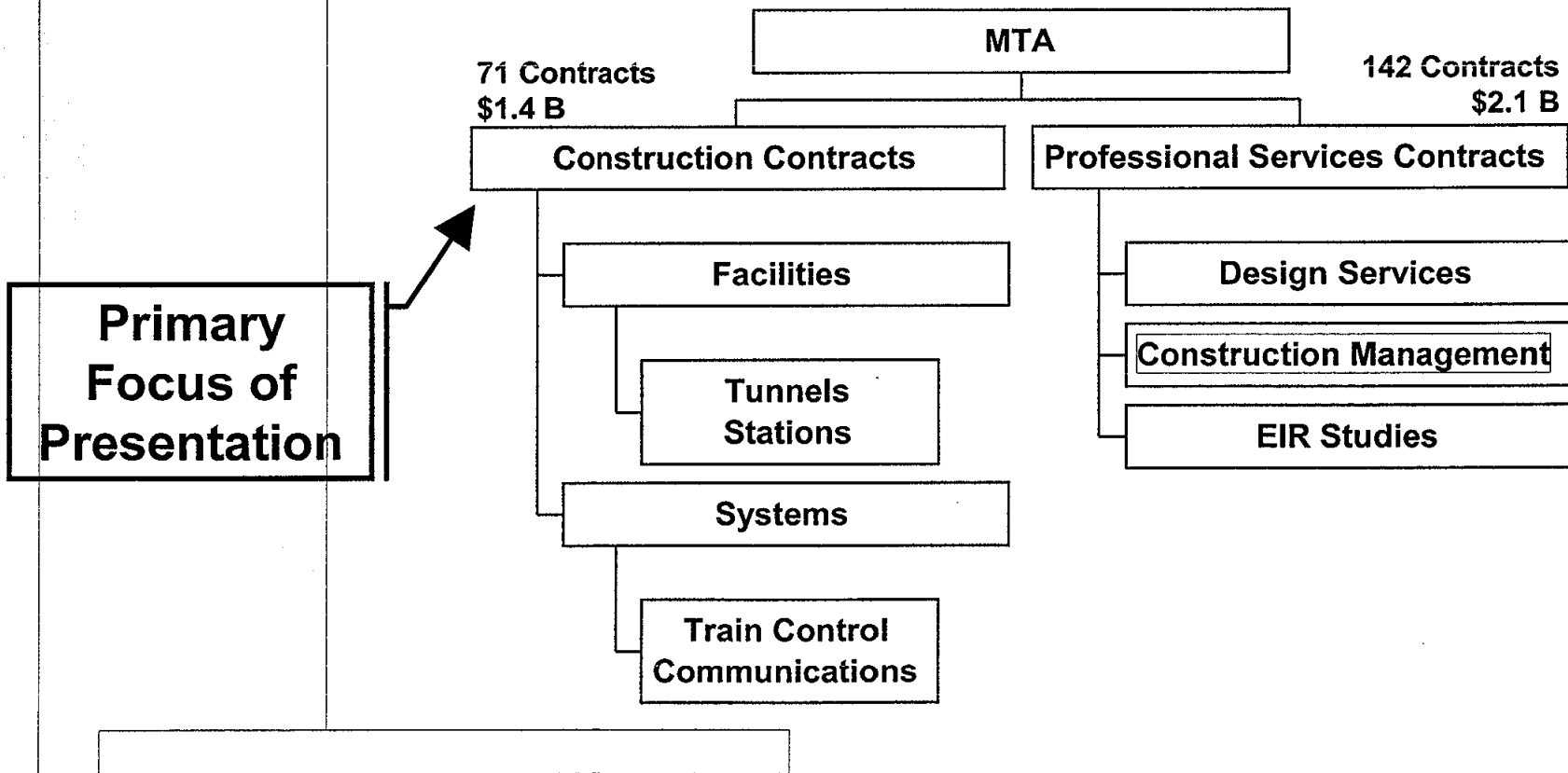
- **Explanation of Costs Recovered:**
 - **Negotiated With Contractor's Claims:**
 - **MTA Backcharges to Contractors: \$300K**
 - **MTA Insurance Backcharges to Contractors: \$200K**
 - **Potential MTA Insurance Recovery:**
 - **El Nino Flood Damage: Multi-Million**

PROJECT CLOSEOUT STATUS

- **Dedicated Closeout Team Co-Located in March 2000:**
 - **MTA Contract Administrators, Resident Engineers, Estimators, Auditors and Outside Claims Consultant (PinnacleOne)**
- **Developed Closeout Procedures Manual & Tracking Database (COTS)**

PROJECT CLOSEOUT STATUS

● Contract Types in Closeout



PROJECT CLOSEOUT STATUS

- **Professional Services Contract Closeout**
 - **142 Contracts**
 - **85 Contracts Under \$500,000**
 - **Closeout Plan Under Development**
 - **Full Implementation by April 2002**