

UFS / TAP Update

#23 EMAC
#34 Ops

Executive Management & Audit Committee October 19, 2006



UFS / TAP Update

#23 EMAC
#34 Ops

Operations Committee October 19, 2006



UFS/TAP Update

- **“Tap and Win” Event Results**
 - USG employee won 2 Disneyland tickets
 - Division 9 employee won 4 movie tickets
 - USG employee won a Metro logo coffee cup
 - Winners were notified on 10/13/06
 - 1,442 employees tapped 8,658 times system-wide during the 2 day event
 - Number of employee taps
 - 2,516 taps week before the event
 - 3,318 taps week after the event
 - 32% increase



TAP and win!
September 26 & 27, 8am–2pm
3rd Floor Lobby, Gateway Bldg

Your Metro ID is equipped with a built-in smart chip for a new fare payment system called TAP. Come test your card and you could win Disneyland tickets, movie tickets, or other prizes.

It's easy to enter: Just TAP your Metro Employee ID on the TAP validator located in the 3rd Floor Lobby. Mark your calendar and get ready to TAP and win!

Only Metro employees with a Metro Employee ID are eligible. Employees must tap their Metro ID as the machine reads a valid response to be entered in the system. Employees with Metro ID cards that don't read should go to Human Resources. Please Limit to within the TAP location on that ID card. Prizes will be awarded at random and verified by Customer Support.

M Metro

The poster features a man with glasses and a beard, wearing a dark t-shirt and jeans, celebrating with his arms raised in front of a yellow and white checkered background. To his left is a grey TAP validator machine. The top of the poster has a light blue background with the event title and dates. The bottom of the poster has a dark blue background with the Metro logo and fine print.

UCLA I-TAP Update

"I - TAP Pilot" - Fall Quarter 2006 UCLA

Pass Sales at UCLA from September 5 through October 11

Students	464
Employee & Faculty - Regular	314
Employee & Faculty Zone 1	105
Employee & Faculty Zone 2	5
Total through October 11:	888



Total Number of TAP transactions through October 11

Bus & Rail Total	5,606
Average Number of Taps	155/day

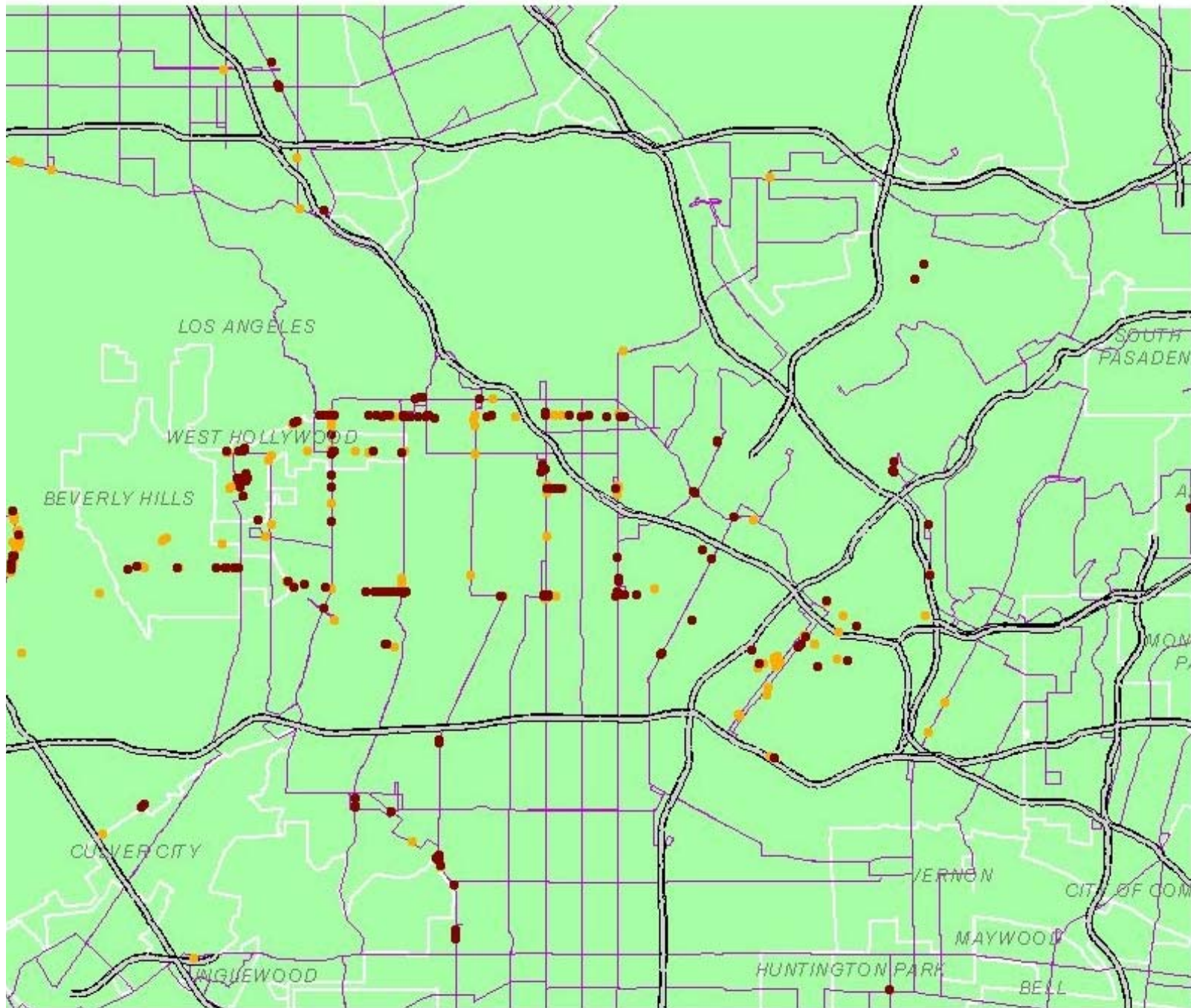
Most Frequently "tapped" Metro Bus Lines

- Line 2 - Sunset
- Line 720 - Wilshire/Whittier Rapid
- Line 761 - Van Nuys/Westwood Rapid

Fare Tra Spatial /

Farebox

Fare Transac
September 1-
Source: MTA
Nextfare Syst



- Farebox
- AM IT
 - PM IT
 - Bus L

Annual & Business TAP to become “smart”

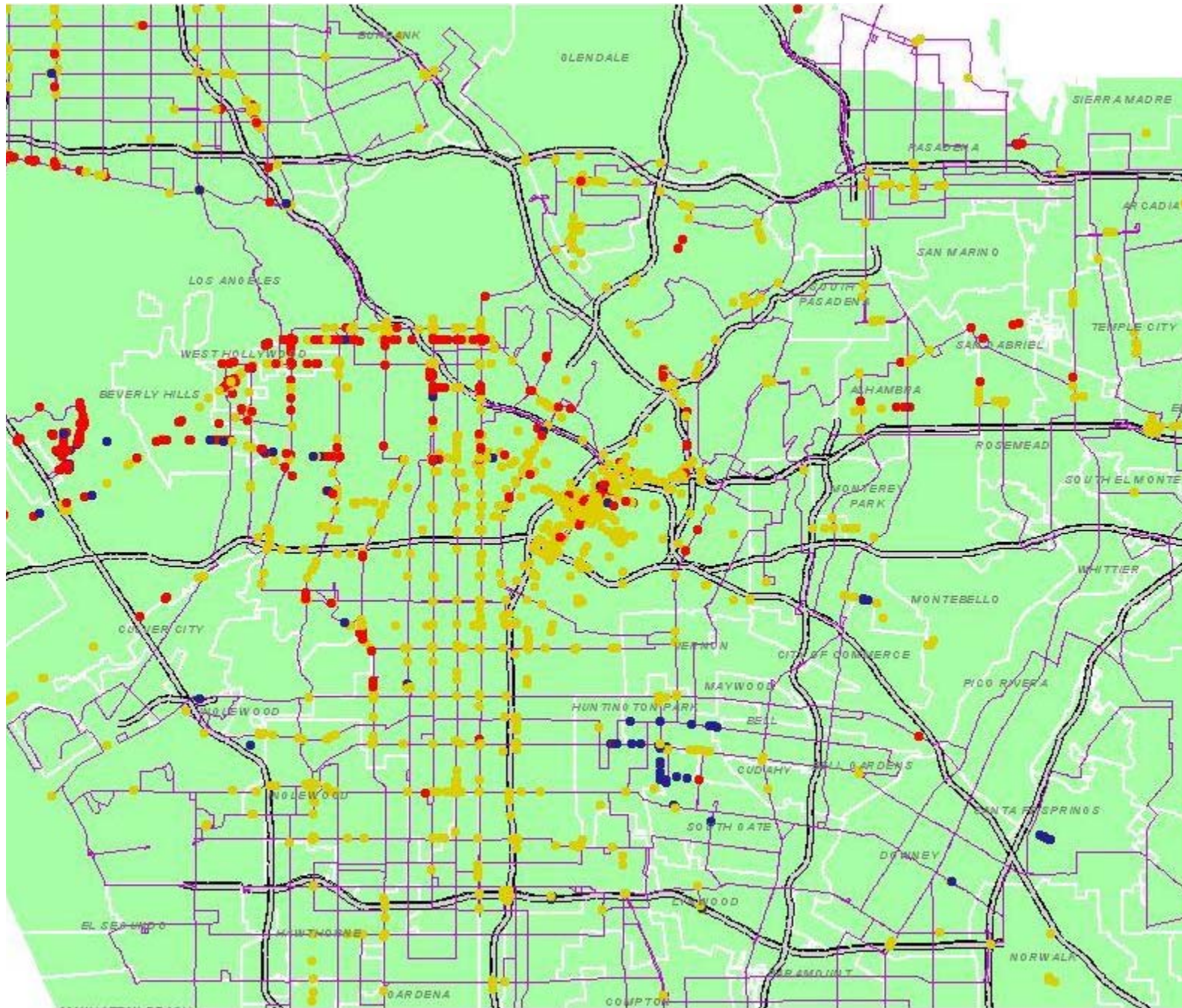
A-TAP & B-TAP card holders will be issued UFS smart cards beginning December 2006:

- Up to 50 employers and sites**
- Represents 2,000 employees**
- Includes local businesses and USC**
- Employees will receive annual pass on TAP card**

Fare Tra Spatial A

Farebox

Fare Transacti
September 1-2
Source: MTA U
Nextfare Syste



- Farebox TAPS
- ITAP S Sum
 - ITAP S Fall
 - ITAP E2 Su
 - ITAP E2 Fa
 - ITAP E1 Su
 - ITAP E1 Fa
 - ITAP E Sum
 - ITAP E Fall
 - CSC Emp P
 - CSC Store V
 - CSC Store V
 - CSC Store V
 - CSC SM1 P
 - CSC Mon P
 - CSC Expr Z
 - CSC 1 D Pa
 - ⌘ Bus Lines

1 2 3 Miles

Thomas Bros. Digital Map Data 2005
Head of Department

Map produced by the
MTC

Regional TAP & Muni Status

- **Cubic Regional Central Final Design now complete**
- **ACS Developments**
 - ACS is supporting I-TAP at Metro as part of “start up”
 - Their new customer support system will be available for pilot in early 2007
 - Will be moving to new Regional TAP center
- **Muni status and meetings on-going:**
 - Gardena
 - Culver City
 - Meetings with Montebello, Foothill and Long Beach later this month

Next Steps

- **Gating Analysis – November Board cycle**
- **Planning continues for 2007 APTA Annual Fare Collection Workshop**
- **Regional Business Rules and TAP policies “next steps”**

Financials

	LOP BUDGET	SPENT	REMAINING
<u>BASE</u>			
Metro (Administrative)	\$ 13,072,901	\$ 9,086,098	\$ 3,986,803
Cubic	\$ 78,505,307	\$ 56,452,781	\$22,052,526
Booz Allen Hamilton	\$ 6,028,792	\$ 5,266,780	\$ 762,012
Total	\$ 97,607,000	\$ 70,805,659	\$26,801,341



Financials

	LOP BUDGET	SPENT	REMAINING
<u>REGIONAL</u>			
Metro (Administrative)	\$ 1,771,838	\$ 108,811	\$ 1,663,027
Cubic	\$ 6,100,000	\$ 2,087,243	\$4,012,757
Booz Allen Hamilton	\$ 2,996,458	\$ 2,070,838	\$ 925,620
Total	\$ 20,071,678	\$ 4,266,892	\$15,804,786



Regional Smart Card - in Action

