

*Metro Gateway Cities  
Service Council  
April 2011 Meeting*

Performance Report  
for *February 2011*

# GWC Service Council April 2011

## Metro Gateway Cities & Metro Bus System

---

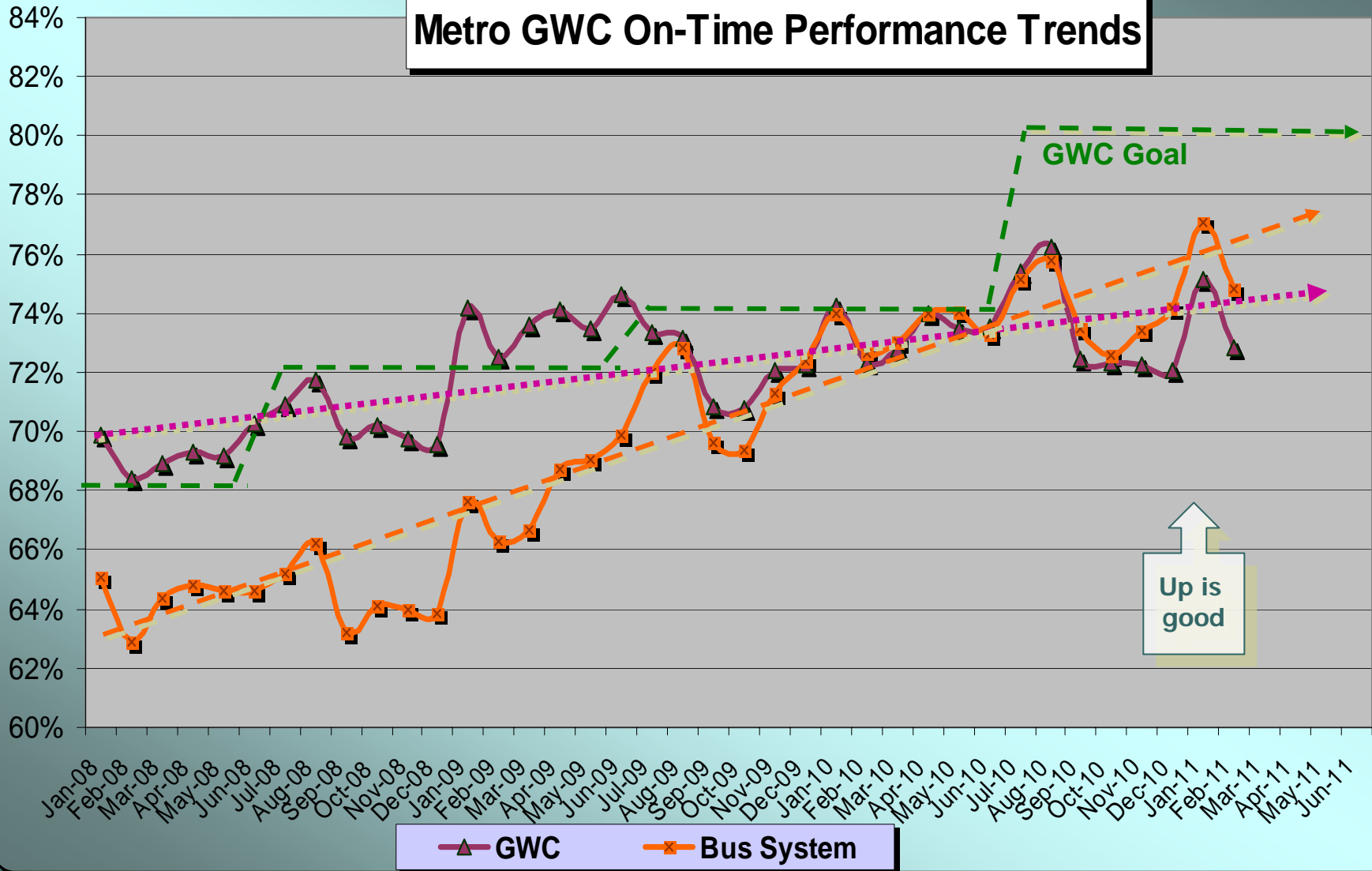
February 2011

Measurement : *On Time Performance*

	Target	Feb.	YTD
<b>Metro Bus System</b>	<b>80.0%</b>	<b>74.8%</b>	<b>74.6%</b>
<b>Gateway Cities</b>	<b>80.0%</b>	<b>72.8%</b>	<b>73.6%</b>

# GWC Service Council April 2011

## Metro GWC On-Time Performance Trends



▲ GWC      ✕ Bus System

Up is good

# GWC Service Council April 2011

## Metro Gateway Cities & Metro Bus System

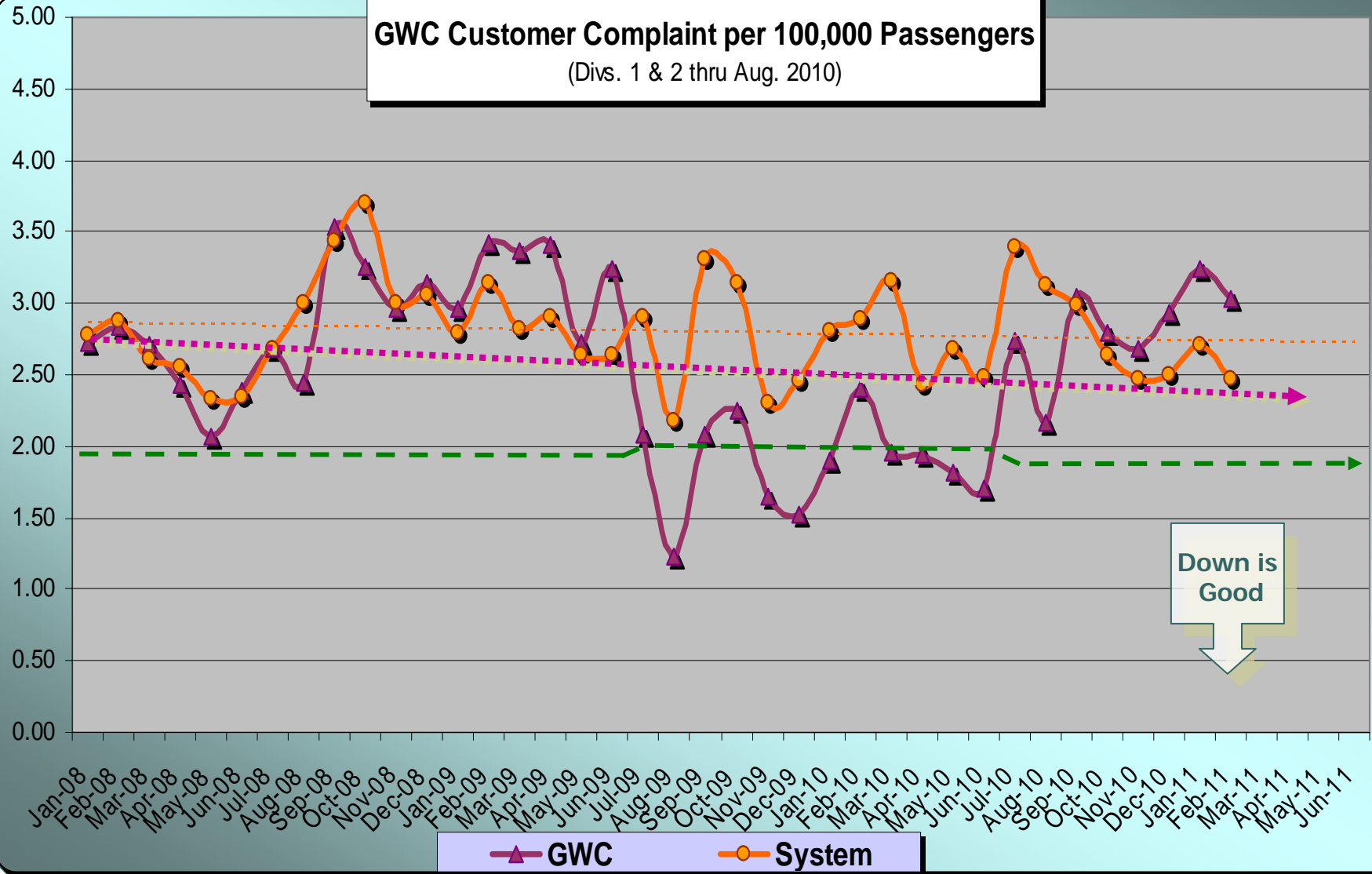
---

February 2011

Measurement : Complaints per 100,000 Psgrs.

	Target	Feb.	YTD
<b>Metro Bus System</b>	<b>2.52</b>	<b>2.47</b>	<b>2.79</b>
<b>Gateway Cities</b>	<b>1.90</b>	<b>3.03</b>	<b>2.82</b>

# GWC Service Council April 2011



# GWC Service Council April 2011

## Metro Gateway Cities & Metro Bus System

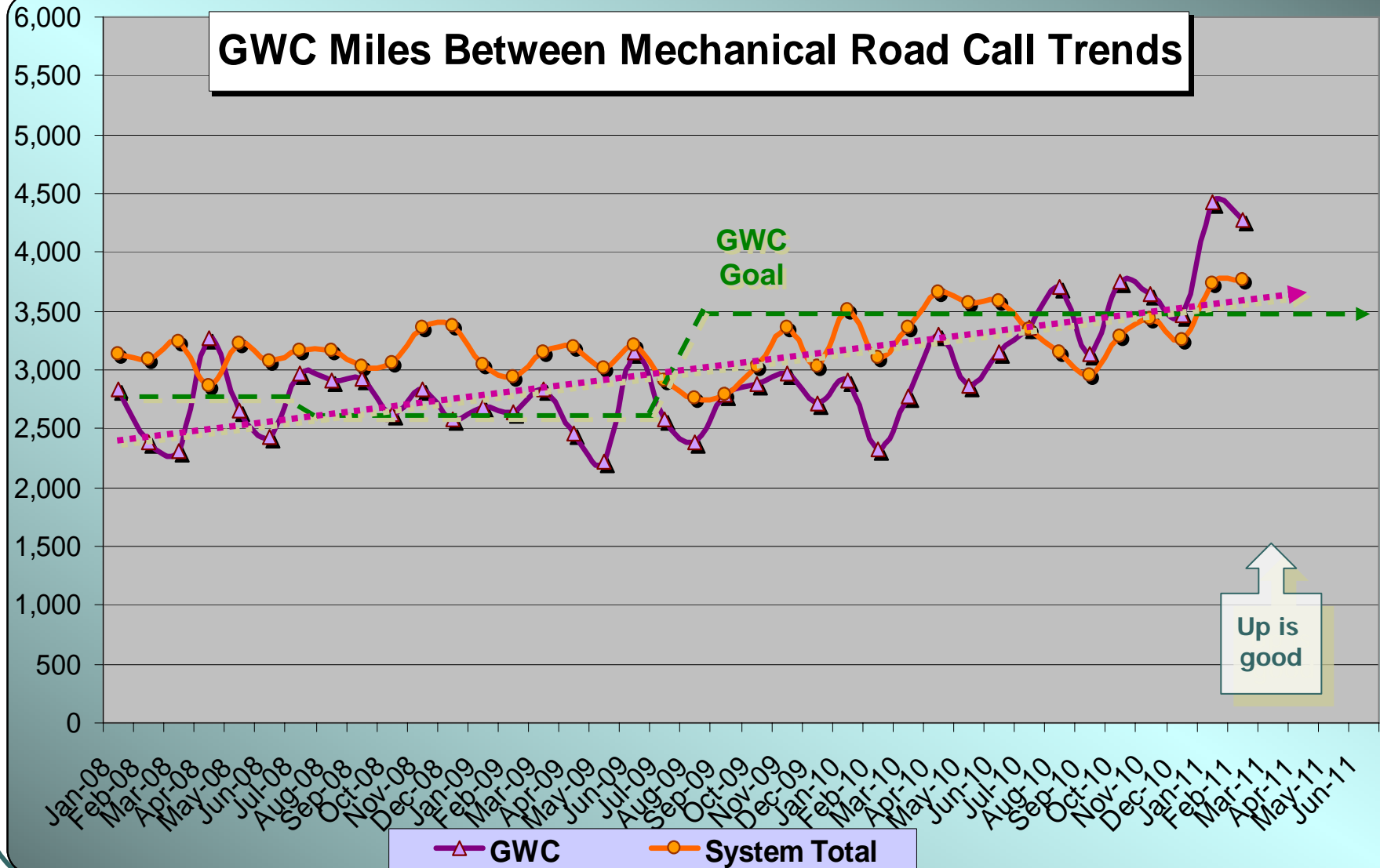
---

February 2011

Measurement : Miles Between Mechanical Road Call

	Target	Feb.	YTD
<b>Metro Bus System</b>	<b>3,664</b>	<b>3,760</b>	<b>3,365</b>
<b>Gateway Cities</b>	<b>3,500</b>	<b>4,280</b>	<b>3,718</b>

# GWC Service Council April 2011



# GWC Service Council April 2011

## Metro Gateway Cities & Metro Bus System

---

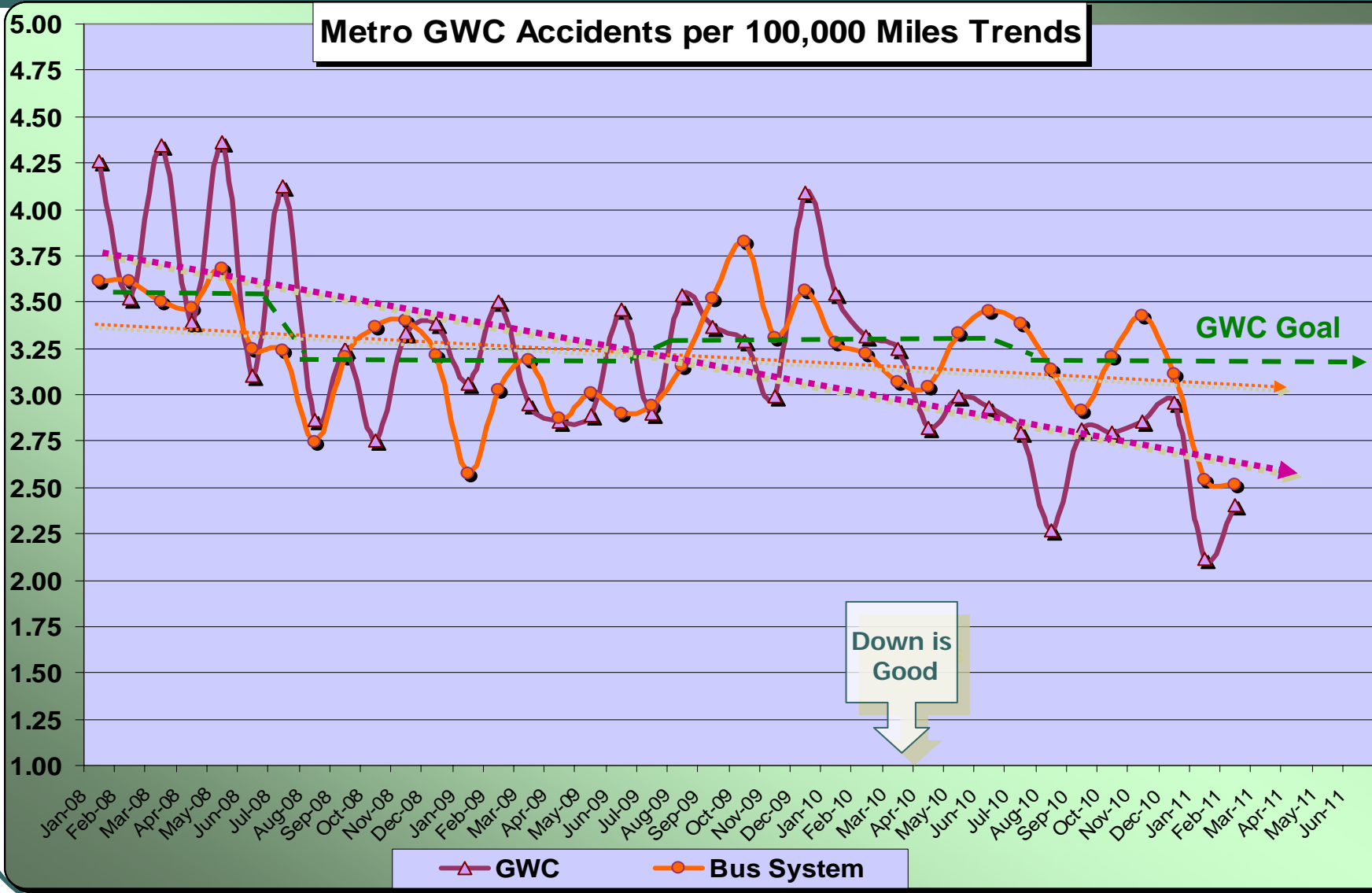
February 2011

Measurement : Accidents per 100,000 Miles

	Target	Feb.	YTD
<b>Metro Bus System</b>	<b>3.14</b>	<b>2.52</b>	<b>3.03</b>
<b>Gateway Cities</b>	<b>3.20</b>	<b>2.41</b>	<b>2.63</b>



# GWC Service Council April 2011



# GWC Service Council April 2011

## Metro Gateway Cities & Metro Bus System

---

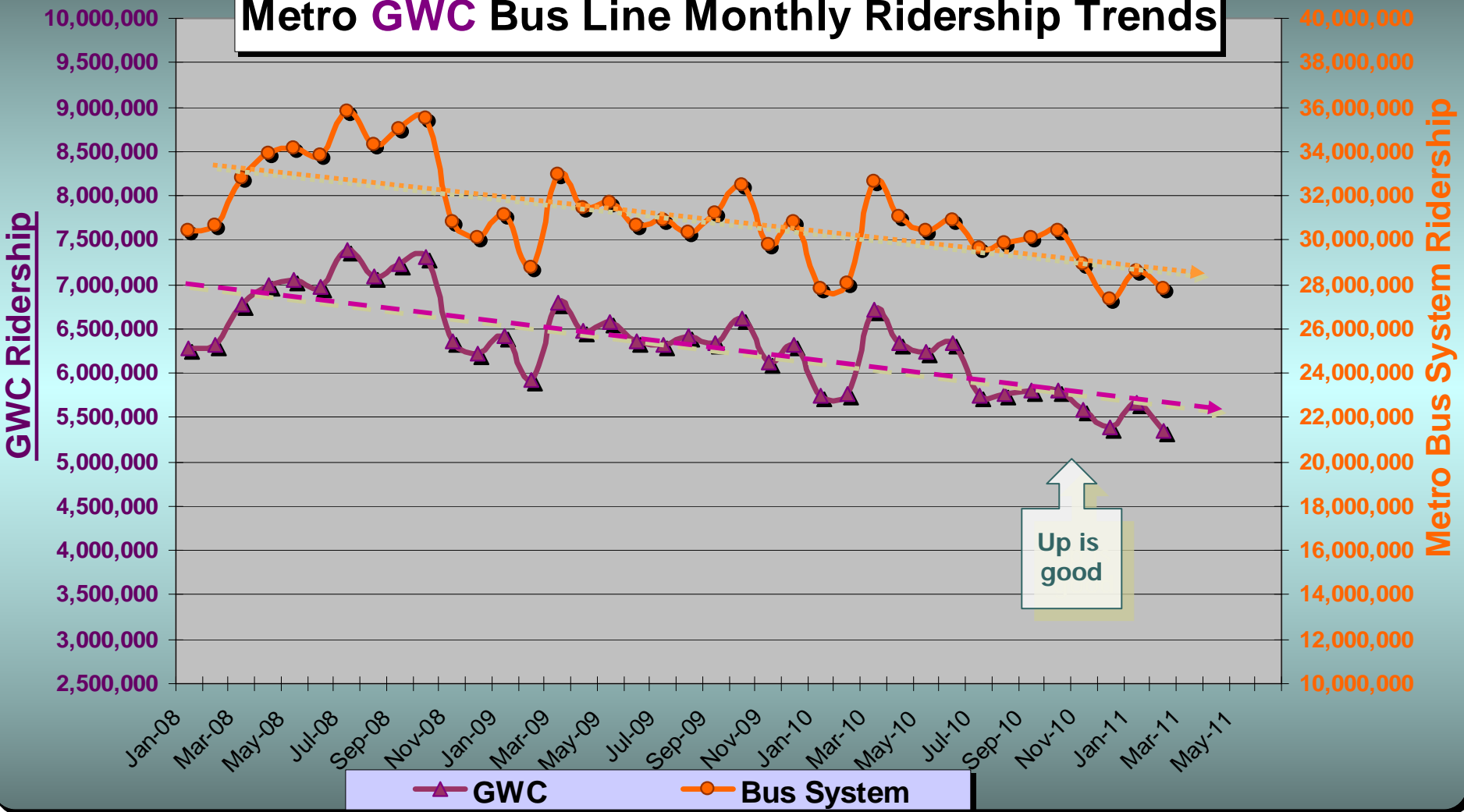
February 2011

Measurement : Monthly Ridership

	Target	Feb.	YTD
<b>Metro Bus System</b>	<b>29,470,000</b>	<b>27,800,000</b>	<b>29,080,000</b>
<b>Gateway Cities</b>	<b>6,050,000</b>	<b>5,350,000</b>	<b>5,640,000</b>

# GWC Service Council April 2011

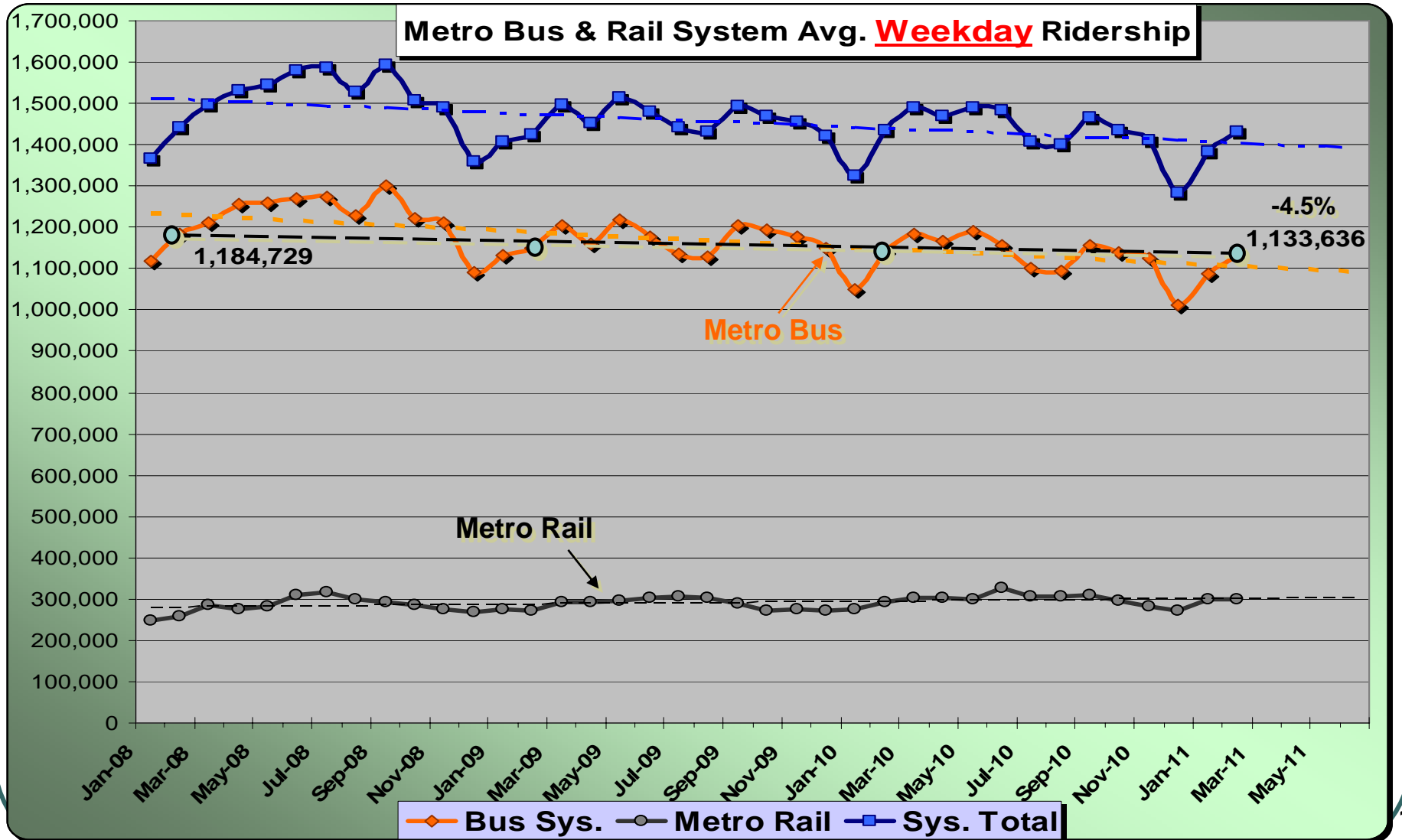
## Metro GWC Bus Line Monthly Ridership Trends



▲ GWC      ● Bus System

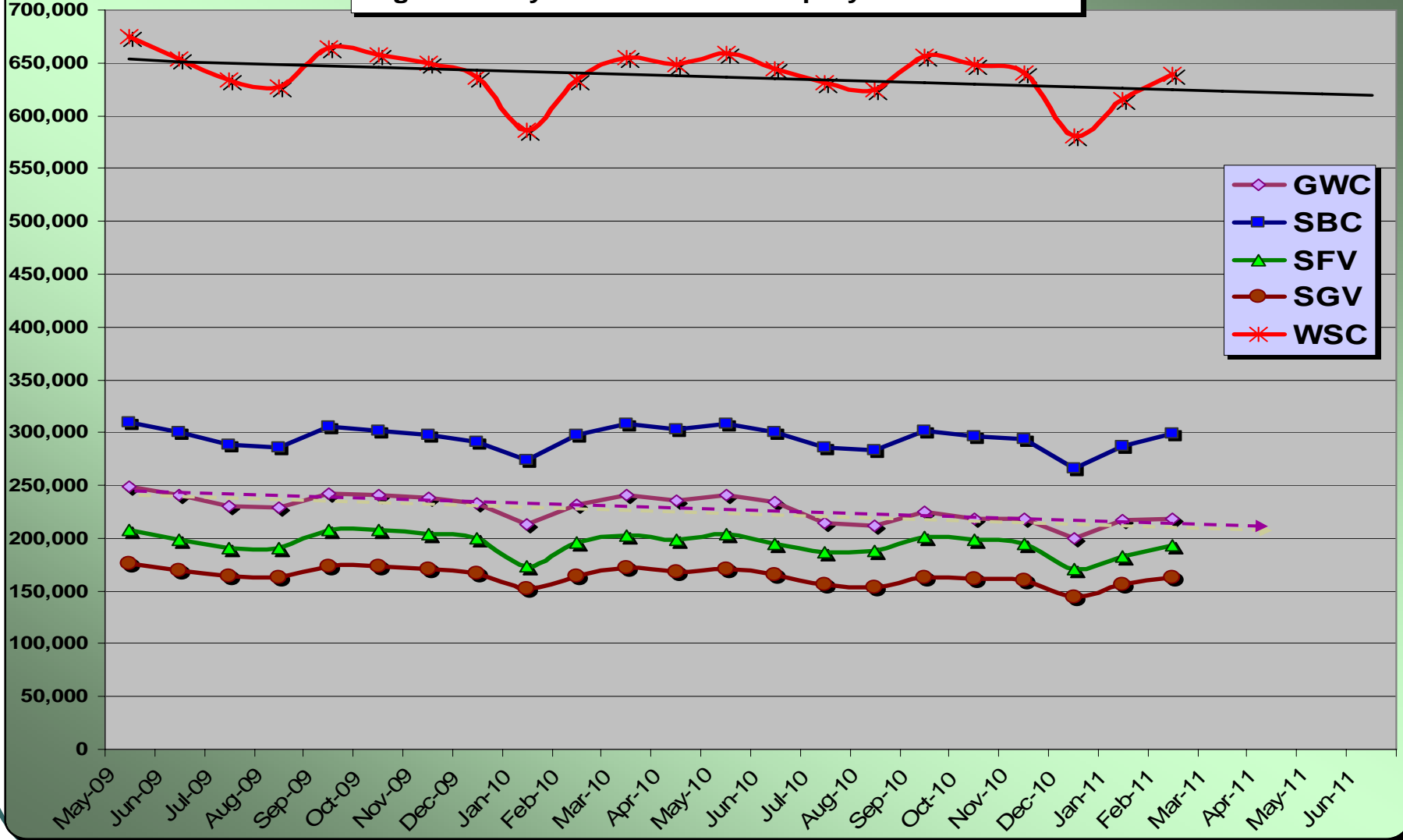
Up is good

# GWC Service Council April 2011

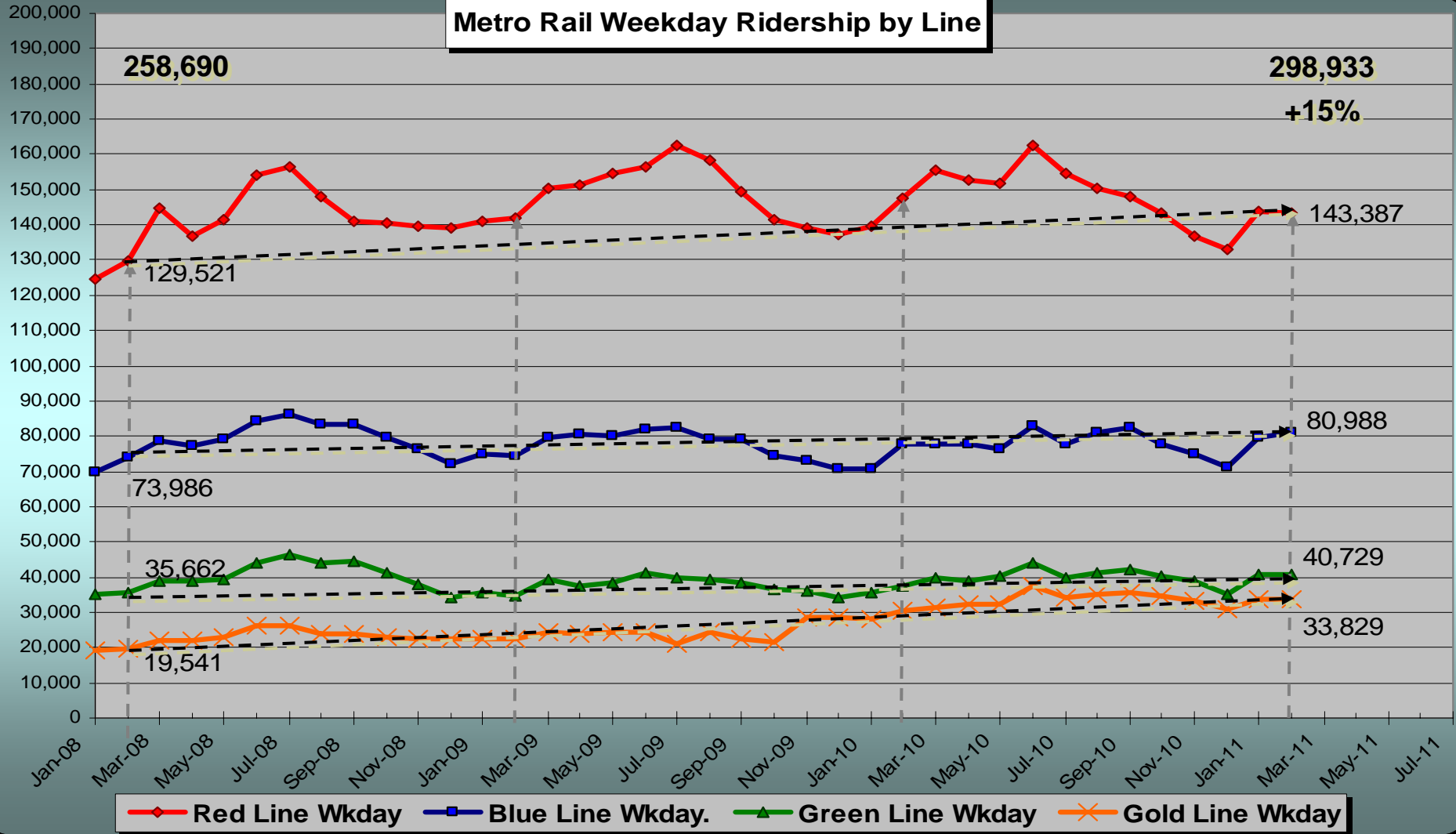


# GWC Service Council April 2011

Avg. Weekday Metro Bus Ridership By Service Council



# GWC Service Council April 2011



**298,933**  
**+15%**



# GWC Service Council April 2011

## Selected Metro Board Actions in February

---

- **Revised Metro Service Council Bylaws**
- **Changes to Tier I Bus Service for June 2011**
- **Design Build Approach for Crenshaw/LAX Corridor Project**
- **Authorize CEO to Negotiate & Execute AA, DEIS/R & CE for Green Line to LAX Project**
- **Preliminary Funding Marks for 2011 Call for Projects**
- **FY-2012 Budget Planning Parameters**
  - **Sales Tax and TDA** +2.6% (\$605m & \$303m)
  - **STA with no change** (\$96m)
  - **Passenger Revenue** +4.0% (\$349m)
  - **Bus Service** - 8% (-582,000 RSH)
  - **Rail Service** +15% (+111,000 RSH)

## CEO Meet and Confer Quarterly Meeting

---

### March 31 Meet & Confer with CEO

- **Contingency Plan for Potential Ridership Increase**
- **Status – Transit Operations**
- **Metro Budget for FY-2012**
- **Ethics Presentation by Karen Gorman**
- **Real Time Bus Information**