

***Metro Gateway Cities  
Service Council  
August 11, 2011 Meeting***

**Performance Report  
for *June 2011***

# GWC Service Council August 2011 Meeting

## Metro Gateway Cities & Metro Bus System

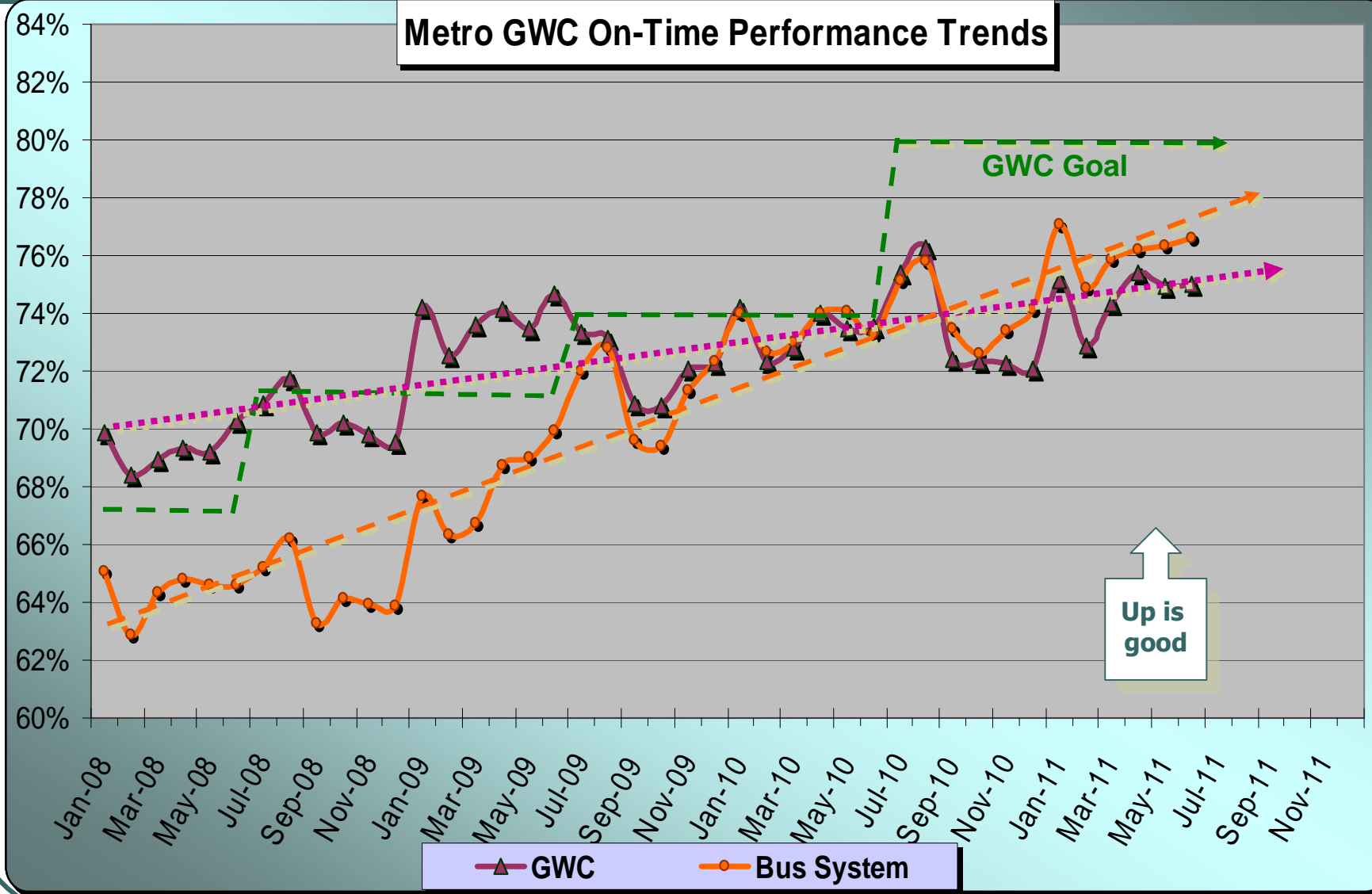
June 2011

Measurement : On Time Performance

	Target	June	YTD
Metro Bus System	80.0%	76.6%	75.2%
Gateway Cities	80.0%	75.0%	74.1%

2

# GWC Service Council August 2011 Meeting



# GWC Service Council August 2011 Meeting

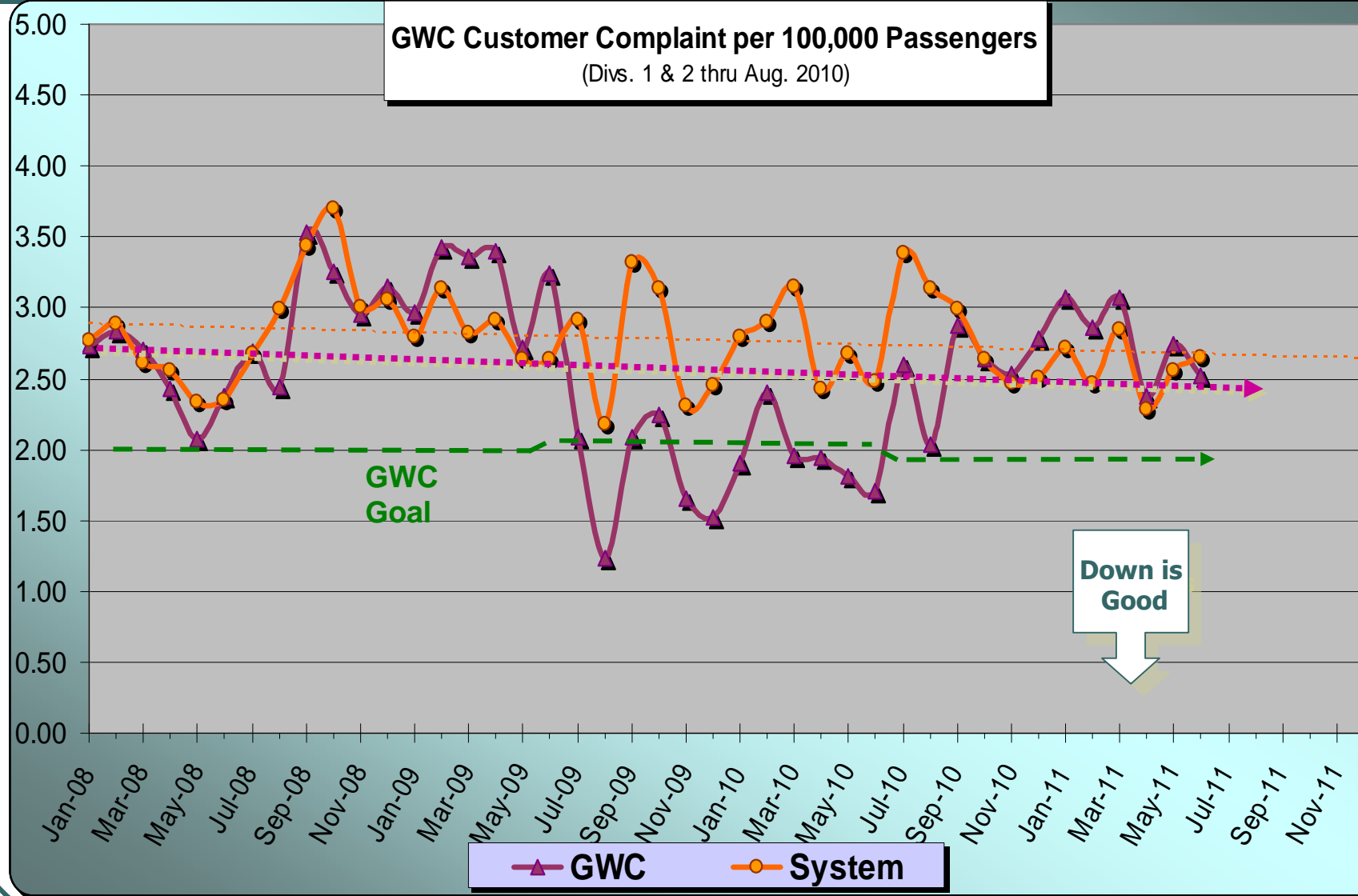
## Metro Gateway Cities & Metro Bus System

June 2011

**Measurement :** Complaints per 100,000 Psgrs.

	Target	June	YTD
<b>Metro Bus System</b>	<b>2.52</b>	<b>2.65</b>	<b>2.72</b>
<b>Gateway Cities</b>	<b>1.90</b>	<b>2.52</b>	<b>2.68</b>

# GWC Service Council August 2011 Meeting



# GWC Service Council August 2011 Meeting

## Metro Gateway Cities & Metro Bus System

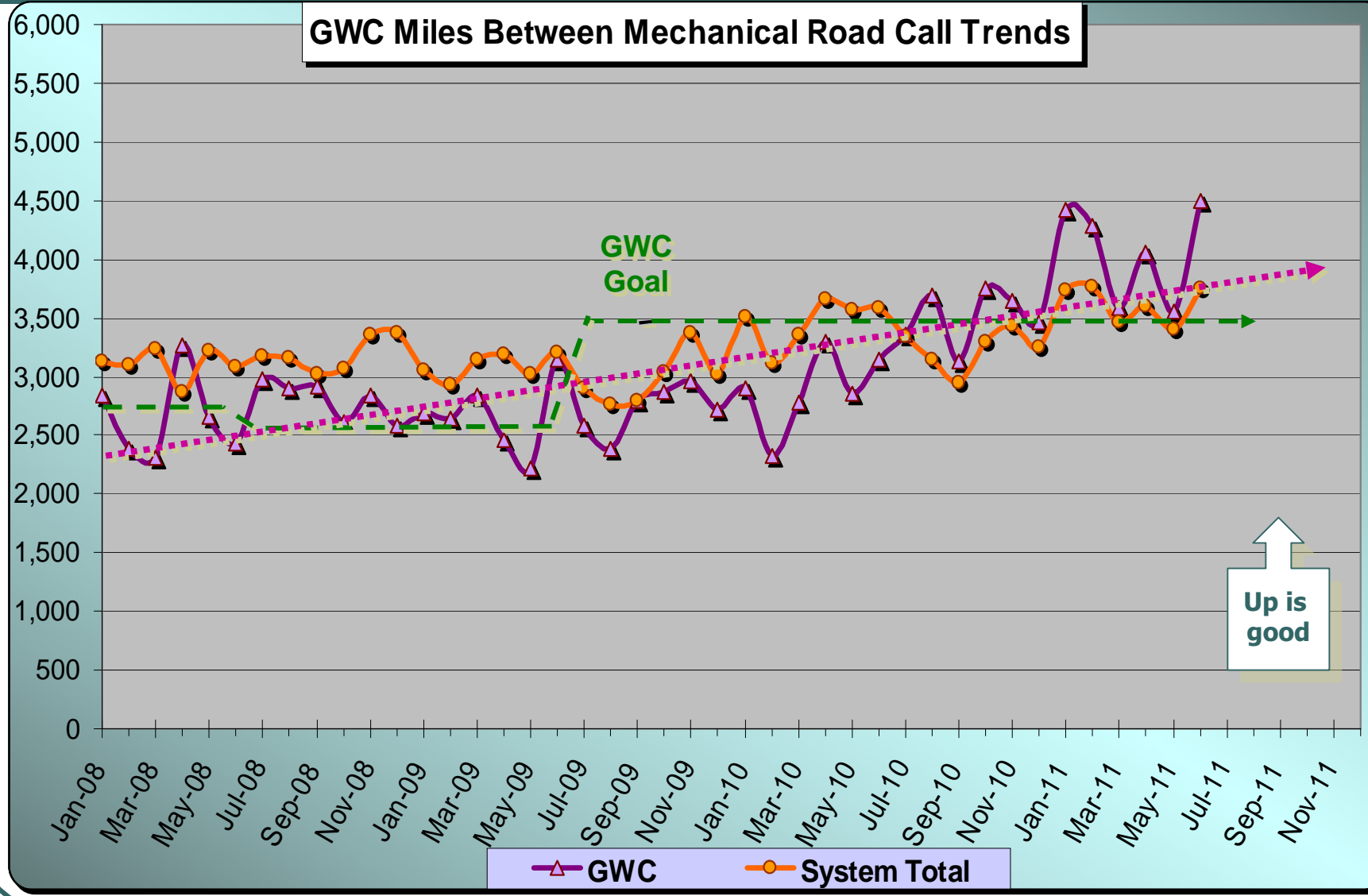
June 2011

**Measurement :** Miles Between Mechanical Road Call

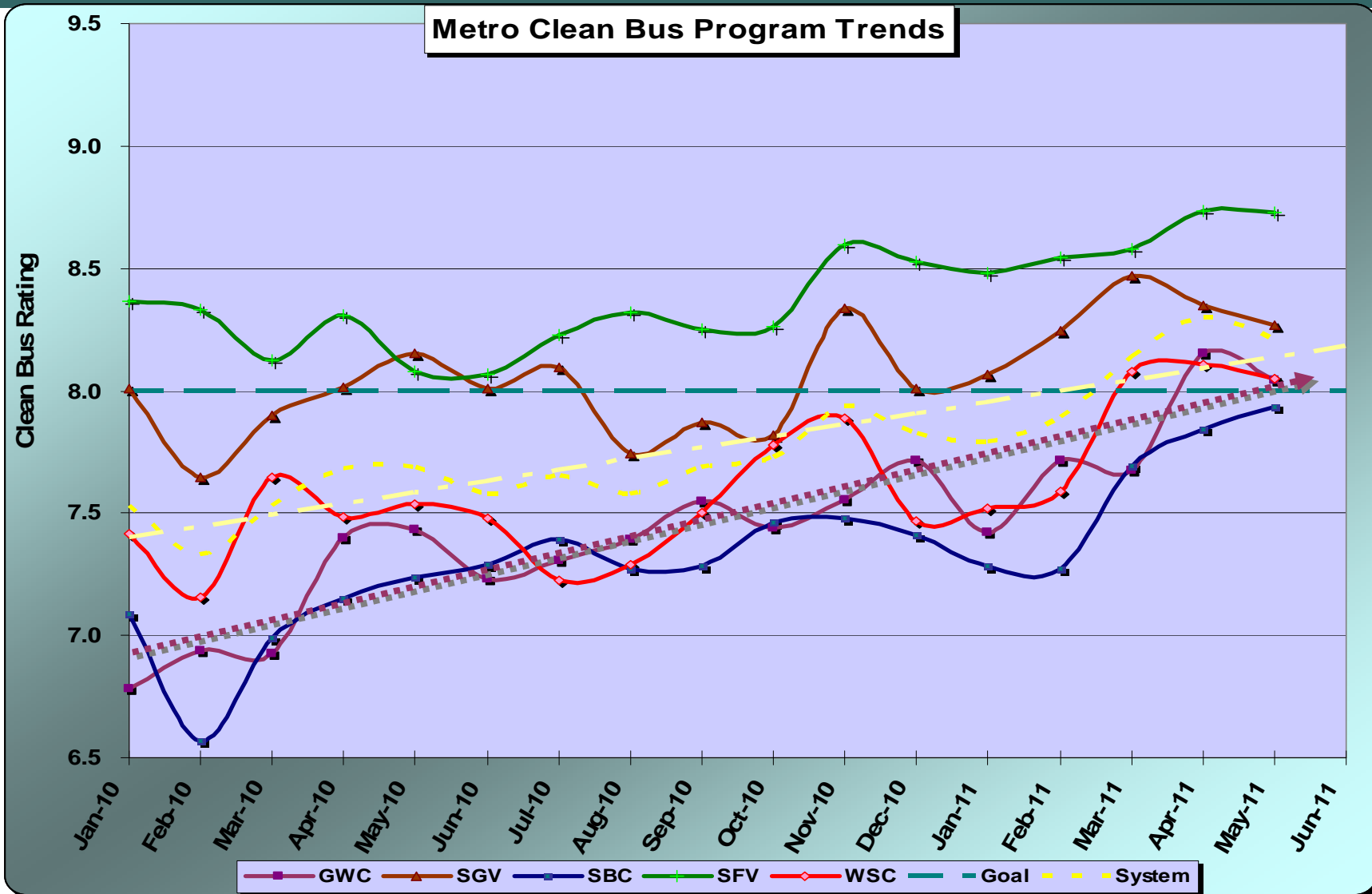
	Target	June	YTD
<b>Metro Bus System</b>	<b>3,664</b>	<b>3,757</b>	<b>3,428</b>
<b>Gateway Cities</b>	<b>3,500</b>	<b>4,496</b>	<b>3,787</b>

6

# GWC Service Council August 2011 Meeting



# GWC Service Council August 2011 Meeting





# GWC Service Council August 2011 Meeting

## Metro Gateway Cities & Metro Bus System

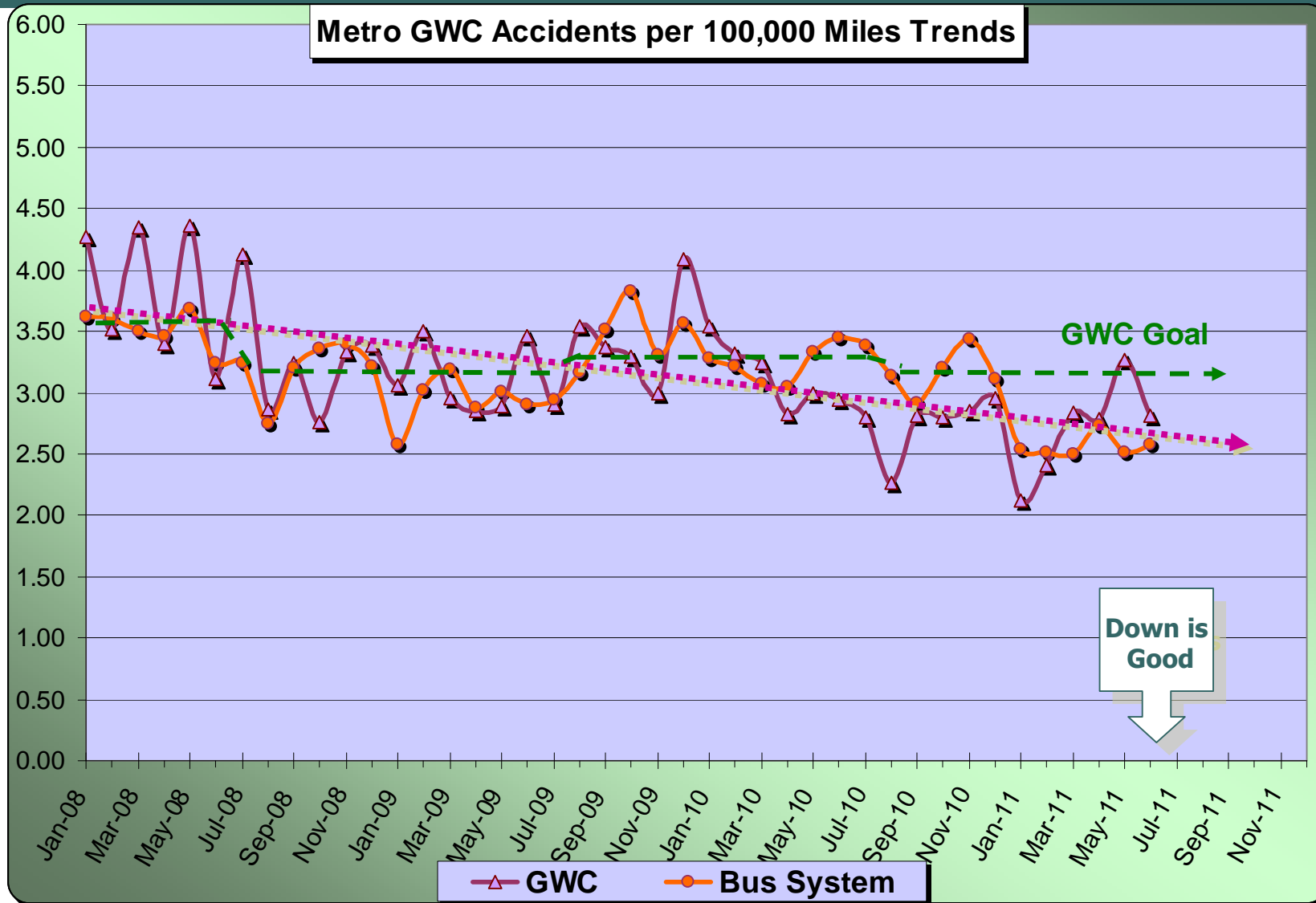
June 2011

**Measurement : Accidents per 100,000 Miles**

	Target	June	YTD
<b>Metro Bus System</b>	<b>3.14</b>	<b>2.58</b>	<b>2.88</b>
<b>Gateway Cities</b>	<b>3.20</b>	<b>2.81</b>	<b>2.73</b>

9

# GWC Service Council August 2011 Meeting



# GWC Service Council August 2011 Meeting

## Metro Gateway Cities & Metro Bus System

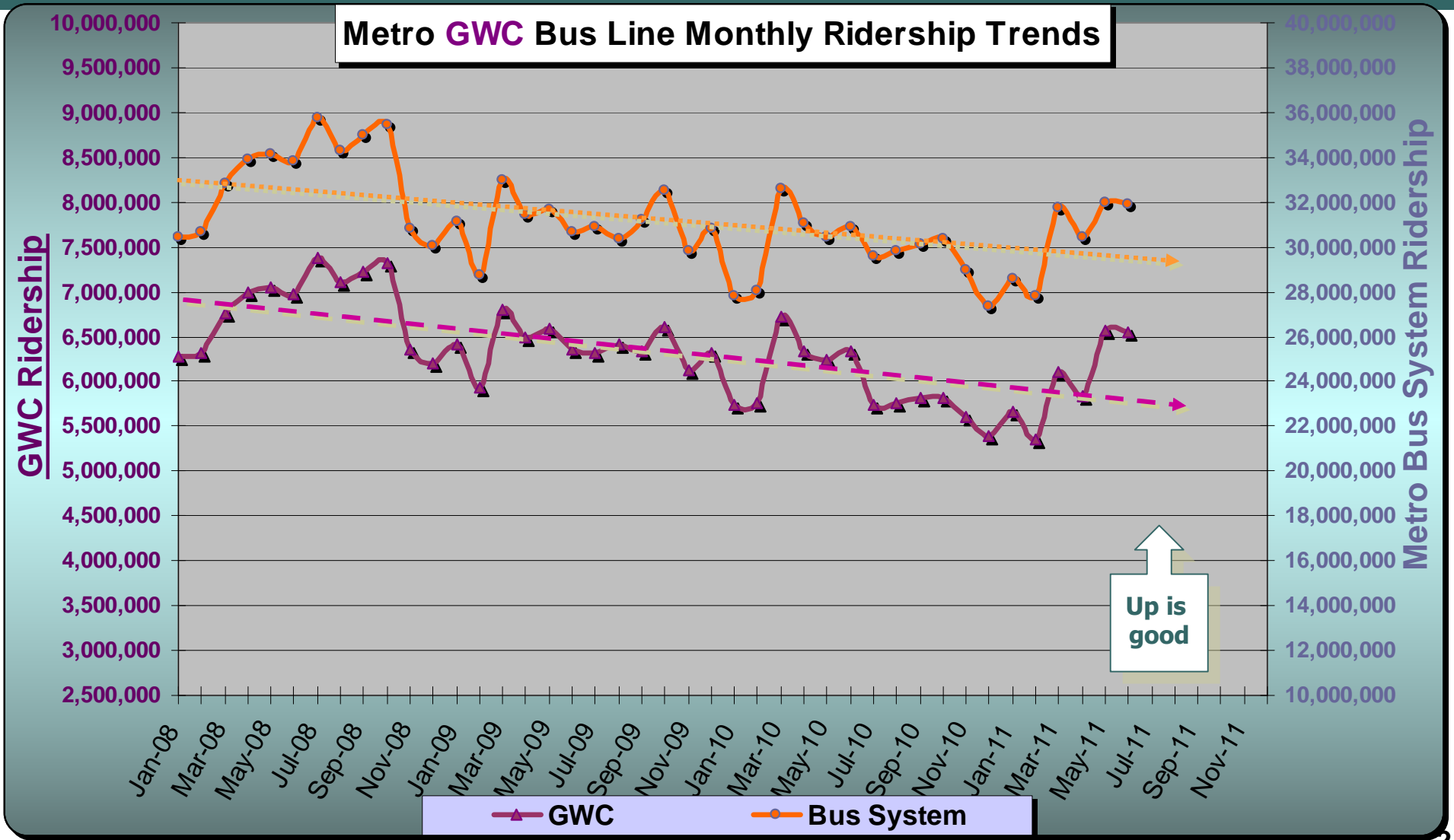
---

June 2011

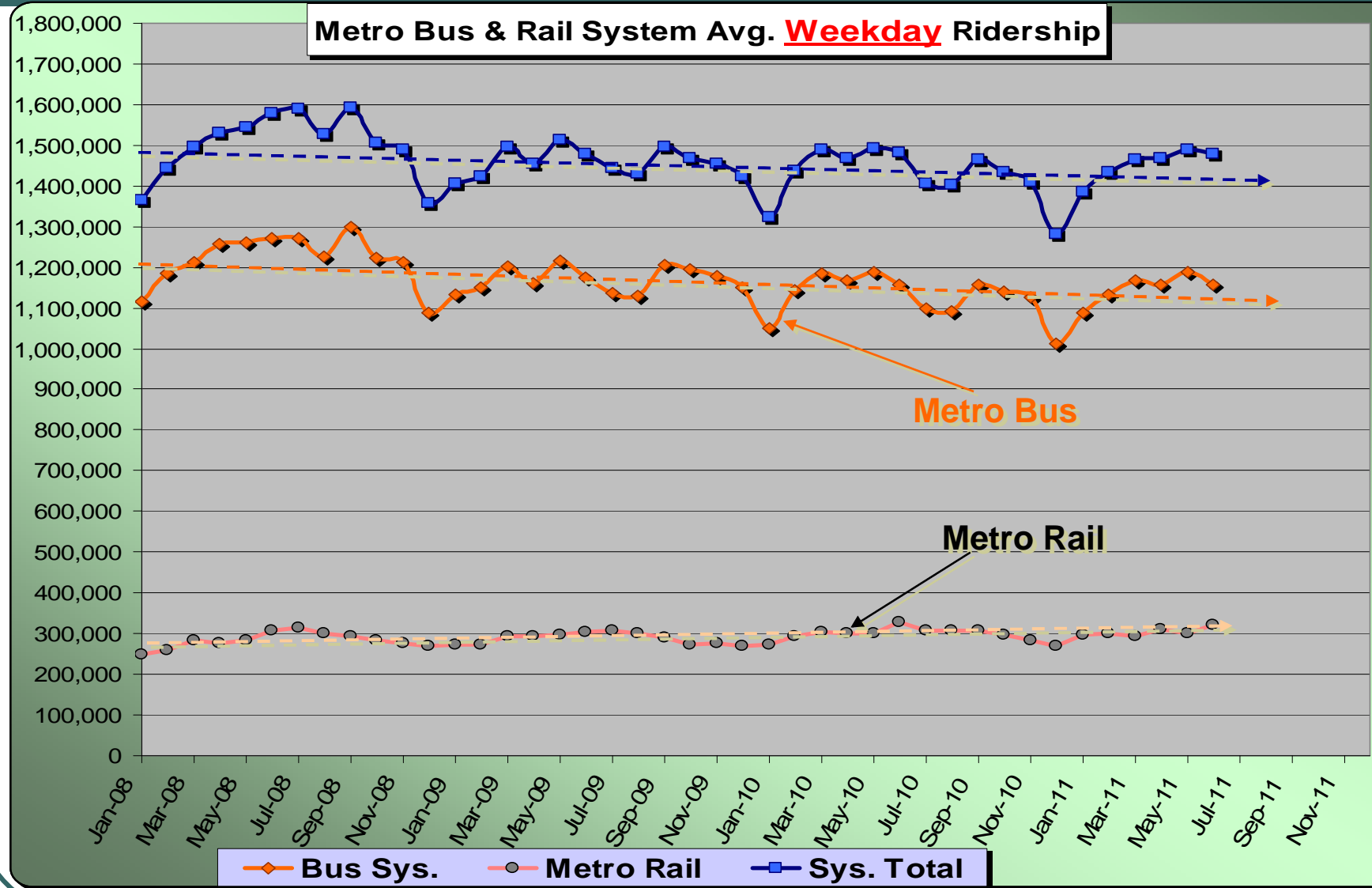
Measurement : Monthly Ridership

	Target	June	YTD
<b>Metro Bus System</b>	<b>29,470,000</b>	<b>31,890,000</b>	<b>29,890,000</b>
<b>Gateway Cities</b>	<b>6,050,000</b>	<b>6,550,000</b>	<b>5,860,000</b>

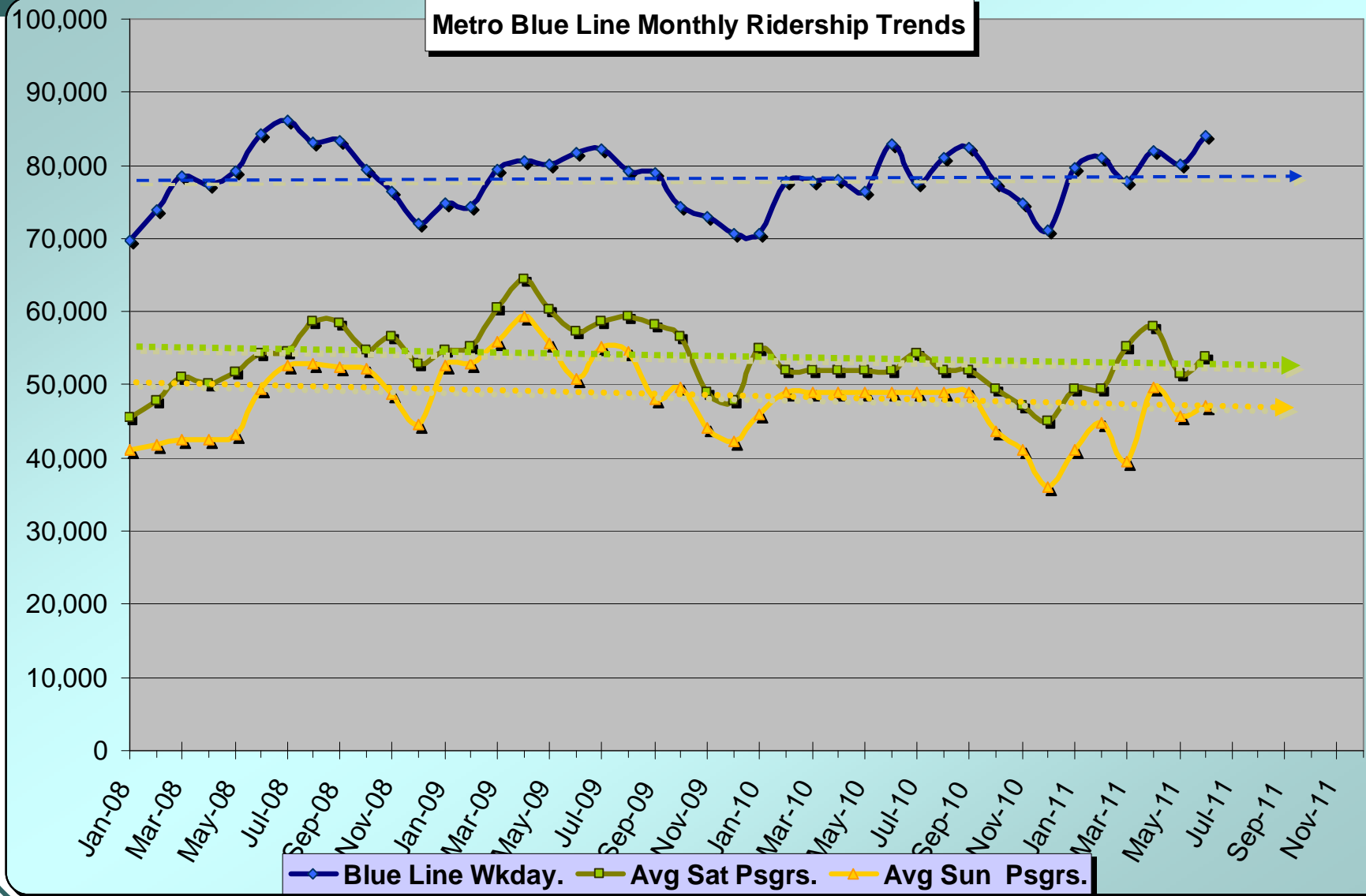
# GWC Service Council August 2011 Meeting



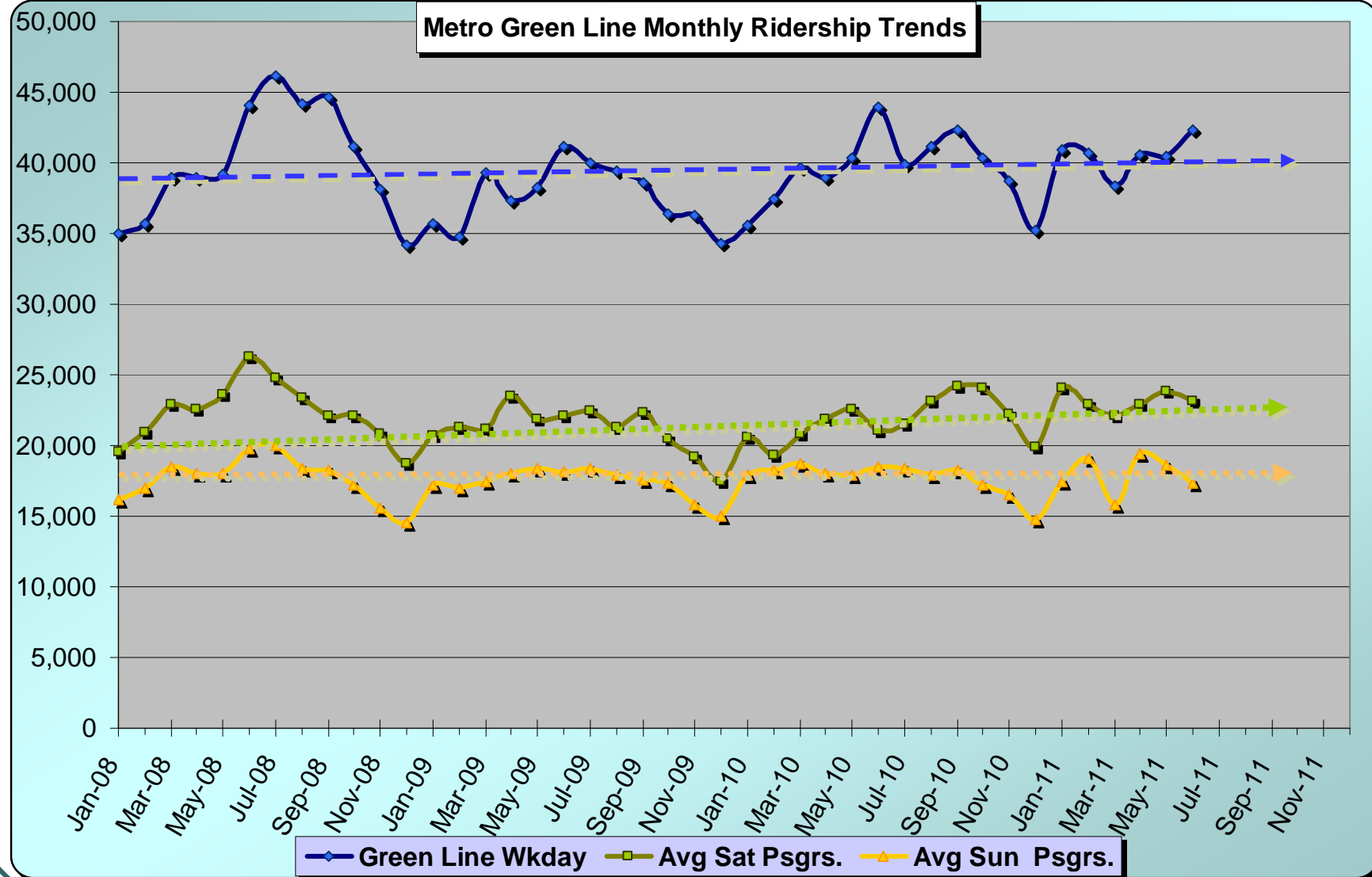
# GWC Service Council August 2011 Meeting



# GWC Service Council August 2011 Meeting



# GWC Service Council August 2011 Meeting



# GWC Service Council August 2011 Meeting

## Carma-what?

- ❖ **Region experienced “Best Case Scenario”**
  - ✓ **People stayed home or stayed away**
  - ✓ **I-405 Opened early**
  
- ❖ **Transit experience no significant problems**
  - ✓ **Estimated slight increase in Metro Rail ridership**
  - ✓ **Metro Bus ridership about average**
  - ✓ **Cost and lost revenue estimates being developed**
  
- ❖ **Phase II – Spring or Summer 2012**



## Other Major Highway Projects

---

### *I-710 Resurfacing Project*

- Weekend Work
- Ten Weekends Over the Next 3 Months Beginning Aug. 6
  - Freeway closed for two 8 hours periods
  - Restricted lanes

### *Harbor Transitway El Monte Busway Closures*

- Night and Early Mornings Every Day
- One Year Project Beginning August 13 / Sept. 11
  - Transitway / Busway closed from 10pm to 6am every day
  - Five Transitway / Two Busway stations will not be served
  - Express buses in regular traffic lanes and only serve Green Line Sta.

# GWC Service Council August 2011 Meeting

## Selected Metro Board Actions in July/Aug.

---

### ❖ Motion by Mayor Antonio R. Villaraigosa

1. Maintain service hours on Metro's Tier 1 and Rapid Bus service for FY12
2. Monitor passenger loads and on-time performance
3. Develop strategy and timeline to complete UFS or TAP to Board in Oct. 11
4. Provide an implementation plan for quarterly bus service evaluation program as outlined in June 11 report on bus service modifications to the Operations Committee
5. Appoint an internal compliance manager to report on Metro bus service quality in coordination with the Service Councils on a monthly basis
6. Identify a minimum of five Bus Rapid Transit Corridors in the County



# GWC Service Council August 2011 Meeting

## Selected Metro Board Actions in July/Aug.

---

### Motion by Villaraigosa-Katz-Yaroslavsky-Dubois

1. Green Construction Equipment Policy
2. Develop a plan & timeline for Metro funded projects in local jurisdictions
3. Develop a technical assistance program to support local jurisdictions
4. Work with Caltrans to develop a framework applicable to Metro funded projects

### Motion by Yaroslavsky-O'Conner-Villaraigosa

1. Explore pilot bike share program at rail and BRT station
2. Determine if public-private funding
3. Develop a technical assistance program to support local jurisdictions

### Motion by Antonovich

1. Support Palmdale Station and Bakersfield to Palmdale to LA alignment of HSR
2. Request Sept. 2011 CAHSRA board meeting in Antelope Valley

# GWC Service Council August 2011 Meeting

## Planned Service Council Tours

---

- **ROC / BOC – September 2011**
- **Metro Art Tour – November 2011**
- **Rail & Bus Division Tour – January 2012**
- **Orange Line Extension – March 2012**
- **Gold Line Foothill Extension – May 2012**
- **CMF Bus Mid-Life Rebuild – July 2012**
- **Green Line Extension – September 2012**
- **Expo Tour - TBD**

20

# GWC Service Council August 2011 Meeting

## August Public Hearings Cancellation

---

- Region has been experiencing a general increase in transit ridership
- The hearings contained service reductions
  - Routes shortened
  - Some stops would not be served
  - Reductions in weekend service
- Metro budget did not require more service reductions
- Determination made to pull back proposals
- Staff to re-evaluate service with new ridership and service data

## Proposed Station Names

### Metro looking for public comments

#### Existing Names

- Imperial Wilmington/Rosa Parks
- 103<sup>rd</sup> Street
- Vermont/I-105
- Hawthorne/I-105
- Universal City
- Venice/Roberson
- Anaheim
- Artesia Transit Center
  
- Long Beach Transit Mall

#### Proposed Names

- Willowbrook
- Watts Towers
- Athens
- Lennox
- Universal/Studio City
- Culver City
- Anaheim St.
- Harbor-Gateway Transit Center
- First Street Transit Gallery or Transit Gallery