

METRO GATEWAY CITIES SERVICE COUNCIL MEETING

**PROPOSED SERVICE CHANGES
FOR FEBRUARY 2012 PUBLIC HEARINGS**

December 8, 2011



BACKGROUND

- SEPTEMBER 2011 DIRECTIVE BY METRO'S BOARD OF DIRECTORS:
 - STAFF TO CONDUCT FUTURE STUDY OF METRO'S SIX LOWEST PERFORMING BUS LINES.
 - IDENTIFY WAYS TO INCREASE THEIR EFFICIENCY AND EFFECTIVENESS.
 - SCHEDULE COMMUNITY WORKSHOP TO OBTAIN SUGGESTED IMPROVEMENTS FROM THE PUBLIC.
 - RETURN TO BOARD WITHIN 90 DAYS WITH ACTION PLAN.

BACKGROUND (Cont'd)

o SIX LOWEST PERFORMING LINES INCLUDE:

- o Line 126---Manhattan Beach-Hawthorne Station
- o Line 177---JPL-Pasadena-Sierra Madre Station
- o **Line 202---Willowbrook-Compton-Wilmington**
- o Line 442---Downtown LA-Hawthorne Station
- o Line 607---Windsor Hills-Inglewood Shuttle
- o Line 620---Boyle Heights Shuttle

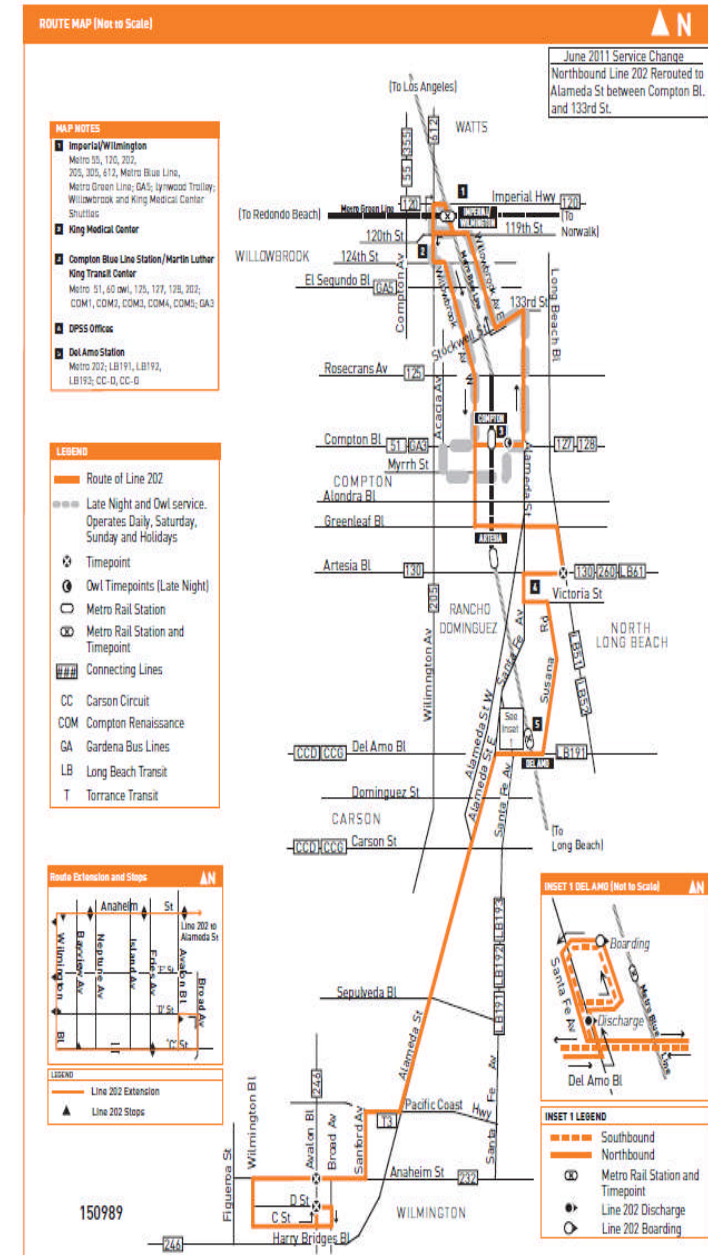
o COMMUNITY WORKSHOP

- o November 15th, 5:00 pm-7:00 pm
- o Metro Headquarters, Union Station Room
- o Fifty Attendees
- o Twenty-one e-mails received

LINE 202 EXISTING SERVICE PROFILE

- WILLOWBROOK TO WILMINGTON
- ROUTE LENGTH: 18 MILES
- MONDAY THRU FRIDAY
- PEAK HOUR ONLY
- FREQUENCY: 55 MINUTES
- SPAN OF SERVICE (Approximate)
 - 5:30 am--9:30 am
 - 3:20 pm--7:40 pm

Effective Jun 26 2011



LINE PERFORMANCE

DAILY BOARDINGS.....274

BOARDINGS PER REVENUE HOUR.....13.56

SUBSIDY PER BOARDING.....\$9.16

ROUTE PERFORMANCE INDEX.....0.25

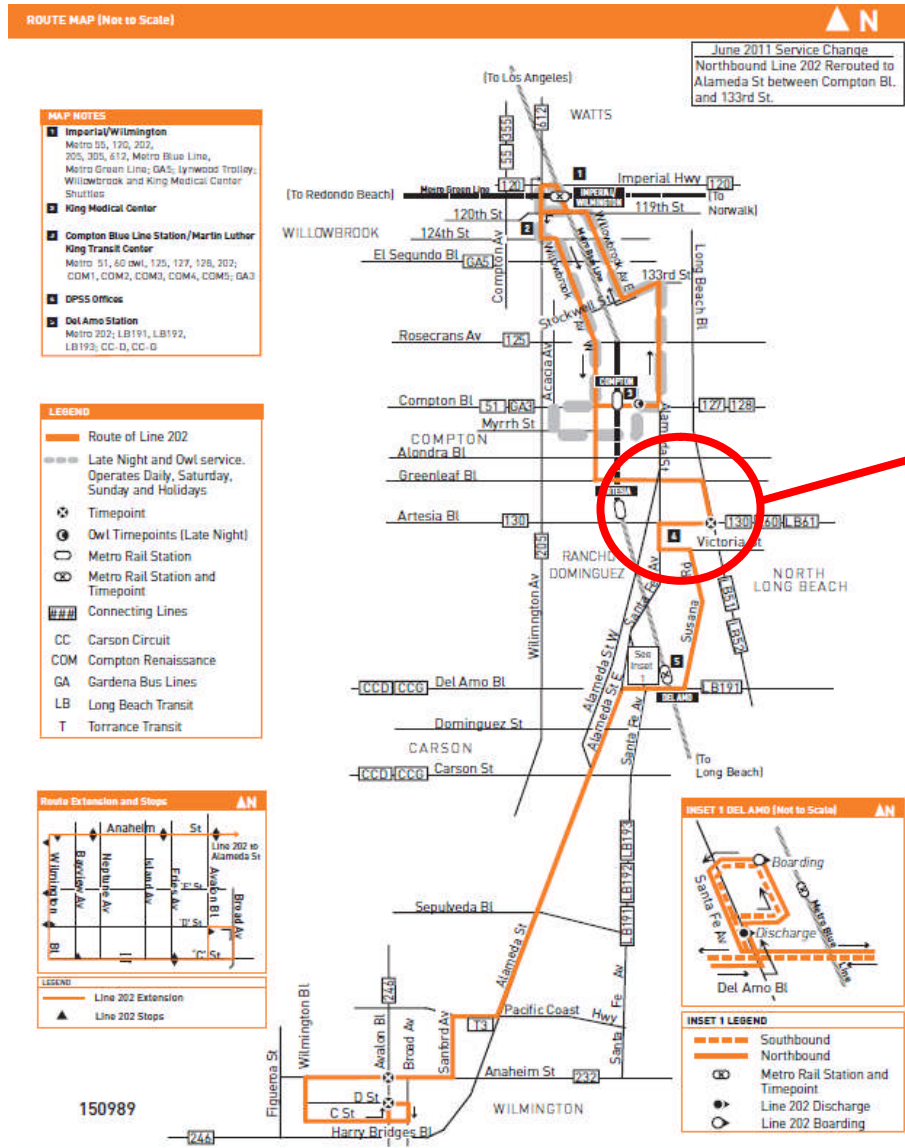
OVERALL RANKING.....145

COMMUNITY INPUT

LINE 202

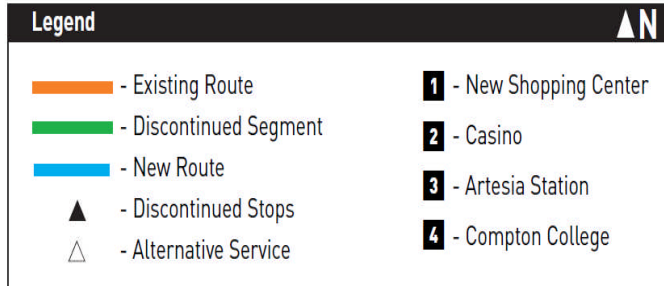
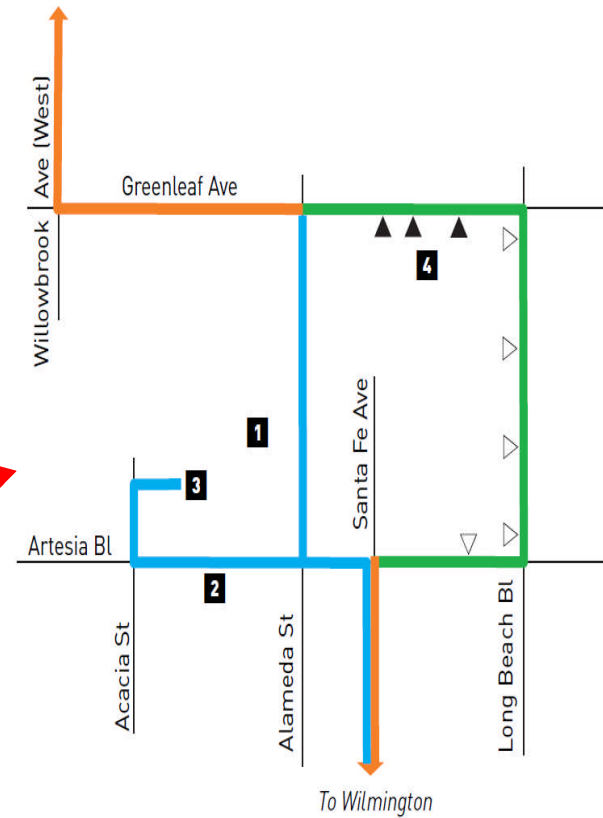
- SERVE THE NEW SHOPPING CENTER IN THE CITY OF COMPTON. NO METRO SERVICE OPERATES THERE TODAY.
- OPERATE NIGHT, WEEKEND & BASE SERVICE; AT LEAST HOURLY.
- OPERATE EARLIER PM PEAK SERVICE.
- RE-ESTABLISH BUS STOP AT ELM ST NEAR THE MLK TRANSIT CENTER.
- IMPROVE ROUTE BETWEEN WILMINGTON AND COMPTON

EXISTING ROUTE LINE 202



PROPOSED MODIFICATION

To Imperial Station



LINE 202 BUS STOP IMPACTS

DAILY PASSENGER ACTIVITY

BUS STOP IMPACTED		NORTH		SOUTH		GRAND TOTAL		ALTERNATIVE
ON	AT	ON	OFF	ON	OFF	ON	OFF	BUS SERVICE
ARTESIA	SUSANA-HARBOR	2	2	2	3	4	5	60, 130 & 260
LONG BEACH	ARTESIA	7	5	8	5	15	10	60
LONG BEACH	67TH	1	0	0	0	1	0	60
LONG BEACH	69TH	0	0	1	1	1	1	60
GREENLEAF	LONG BEACH	2	1	1	3	3	4	60
GREENLEAF	COMPTON COLLEGE	2	0	1	6	3	6	Compton 4
GREENLEAF	MAYO	1	0	0	2	1	2	Compton 4
GREENLEAF	SANTA FE	1	0	0	2	1	2	Compton 4
TOTAL		16	8	13	22	29	30	

PATH FORWARD

- GOVERNANCE COUNCILS REQUIRED TO HOLD HEARINGS FOR MAJOR SERVICE CHANGES.
- PUBLIC COMMENT TO BE CONSIDERED PRIOR TO APPROVING THESE TYPES OF CHANGES, INCLUDING POSSIBLE IMPACTS.
- HEARINGS TO BE COORDINATED WITH OTHER COUNCIL REGIONS.

RECOMMENDED ACTIONS TODAY

- FORMALLY APPROVE THURSDAY, FEBRUARY 9, 2012 AS THE DATE TO CONDUCT A PUBLIC HEARING ON THIS MATTER.
- THE HEARING IS RECOMMENDED TO TAKE PLACE AT THIS LOCATION AT 2 PM AHEAD OF REGULAR COUNCIL MEETING.
- AUTHORIZE PUBLICATION OF THE LEGAL NOTICE LISTING THE SERVICE PROPOSAL UNDER CONSIDERATION.

PENDING PUBLIC HEARING SCHEDULE

- **SAN FERNANDO REGION.....FEB 1, 2012**
- **WESTSIDE/CENTRAL REGION.....FEB 8, 2012**
- **GATEWAY CITIES REGION.....FEB 9, 2012**
- **SOUTHBAY REGION.....FEB 10, 2012**
- **SAN GABRIEL VALLEY REGION... FEB 13, 2012**

NEXT STEPS

- o PUBLISH PUBLIC HEARING NOTICE IN LOCAL NEWSPAPERS JANUARY 1, 2012 & LATER.
- o NOTIFY ALL STAKEHOLDERS ABOUT PUBLIC HEARINGS AND PROPOSED SERVICE CHANGES.
- o PLACE RIDER BROCHURES CONTAINING HEARING INFORMATION ON METRO'S BUSES/TRAINS AND WEBSITE.

QUESTIONS

