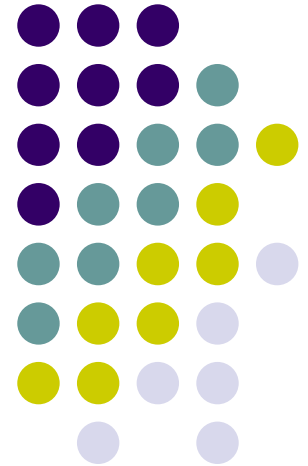


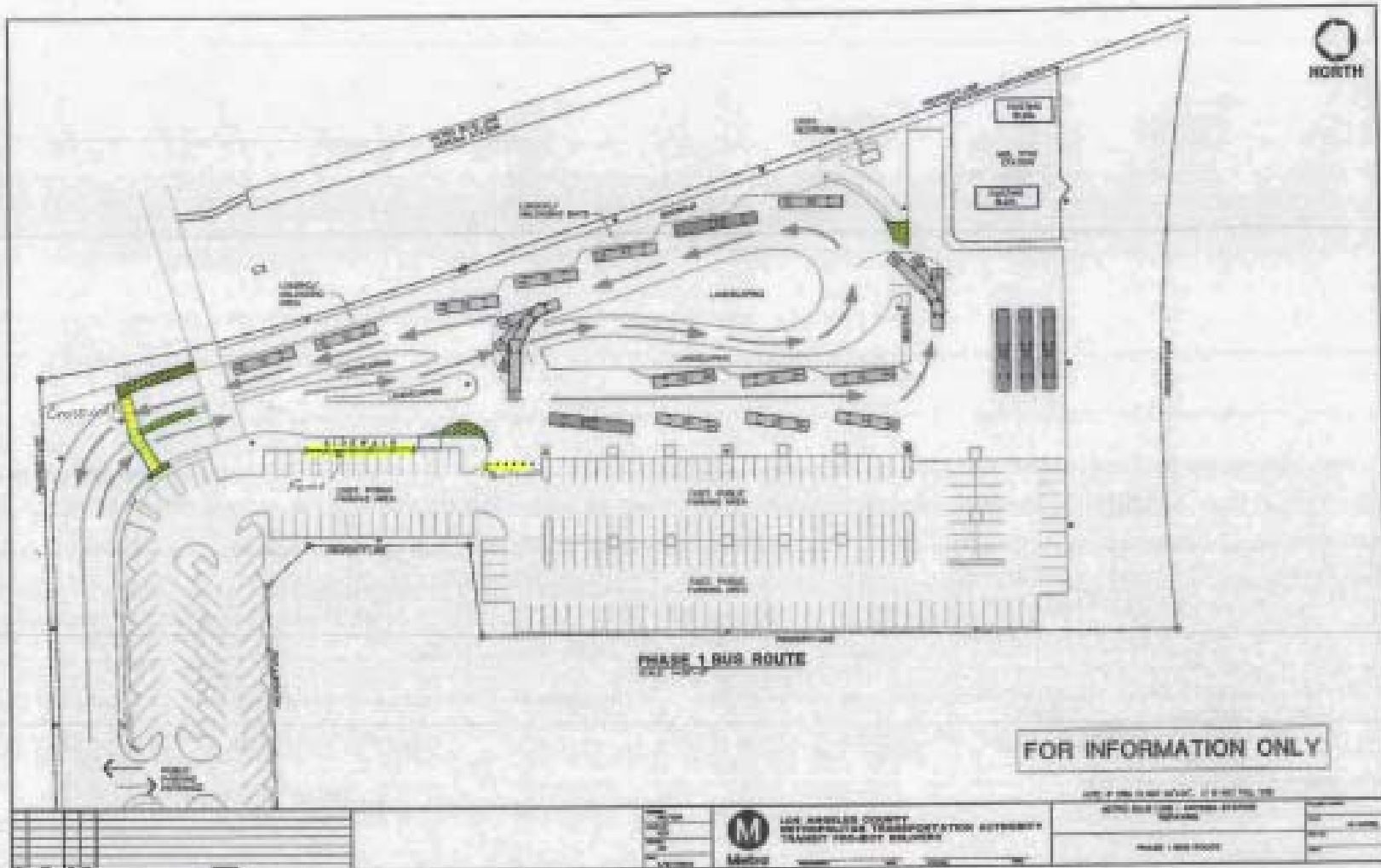
Construction Activities at the Metro Artesia Blue Line Station



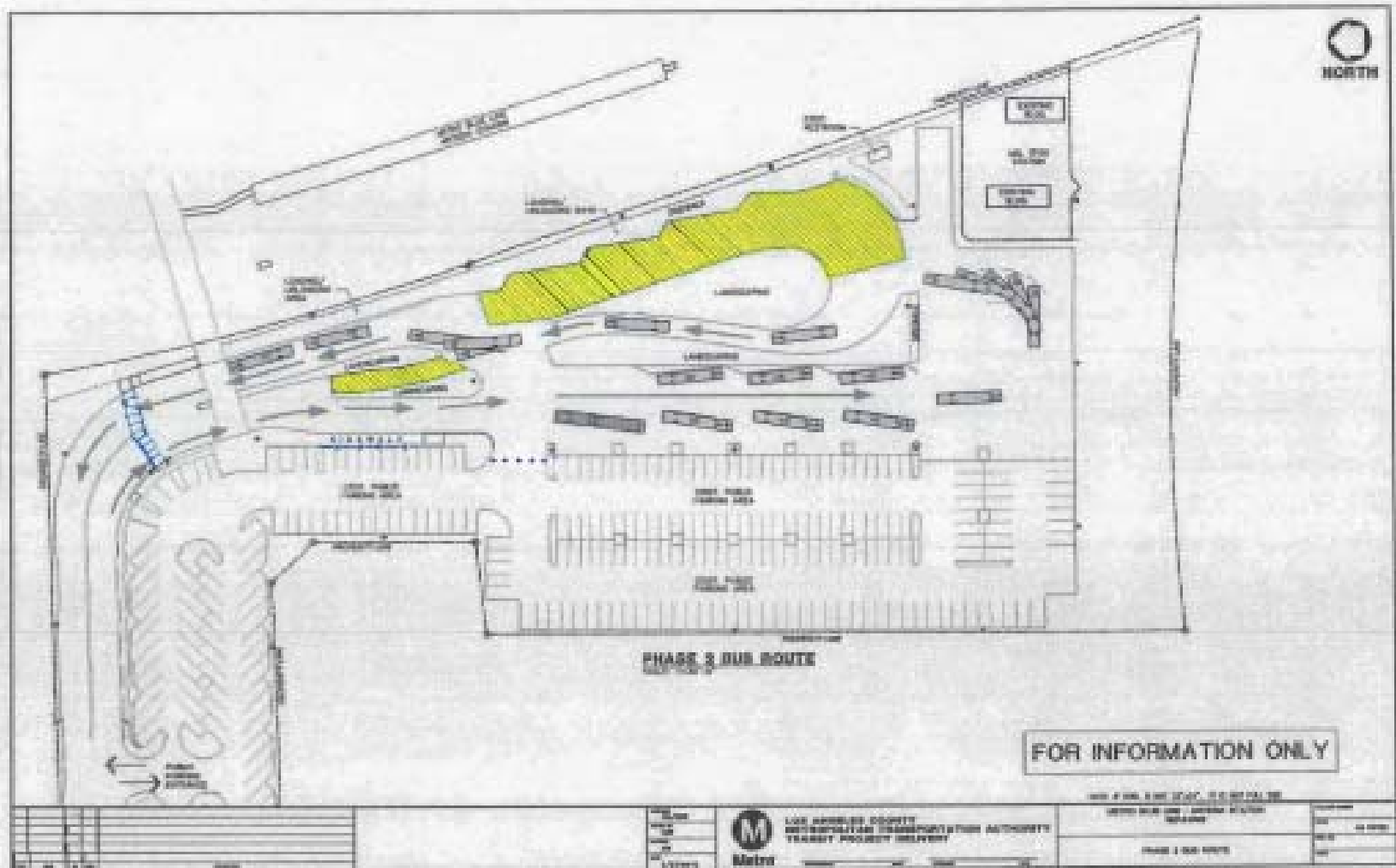
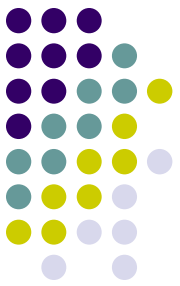
Gateway Cities Service Council Meeting

March 14, 2013

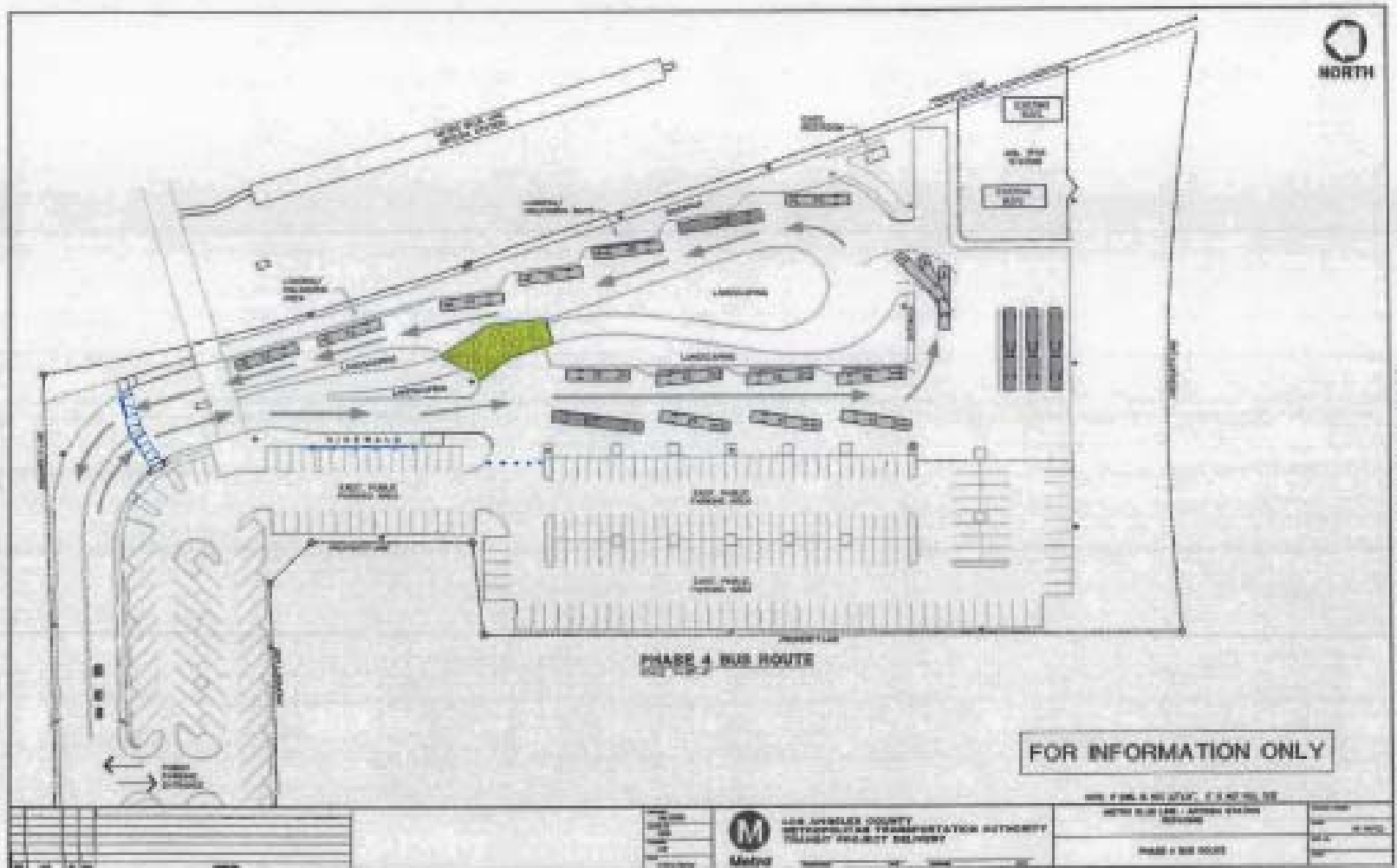
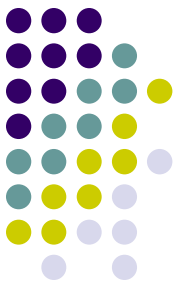
Artesia Blue Line Construction Phase 1



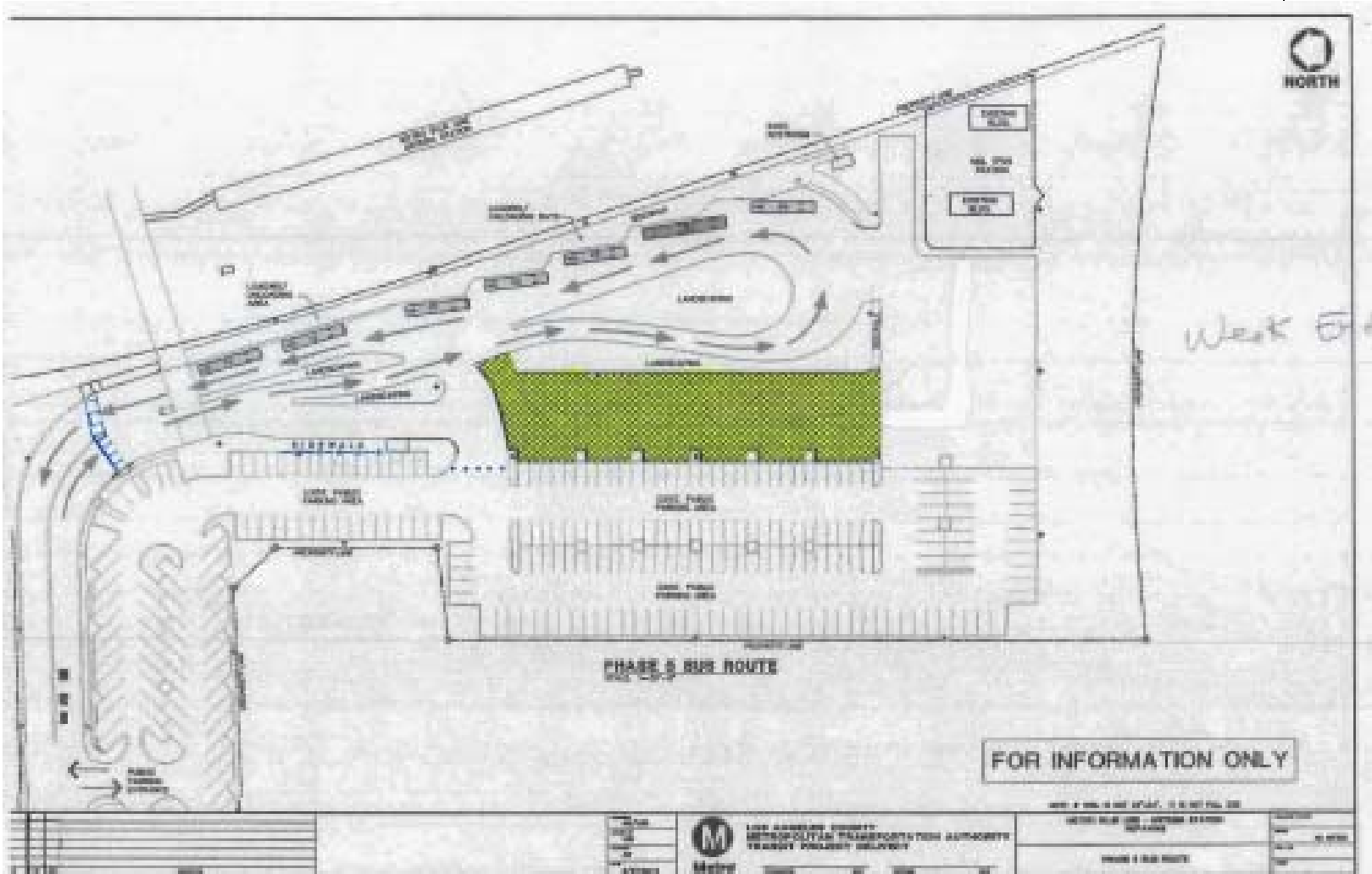
Artesia Blue Line Construction Phase 2



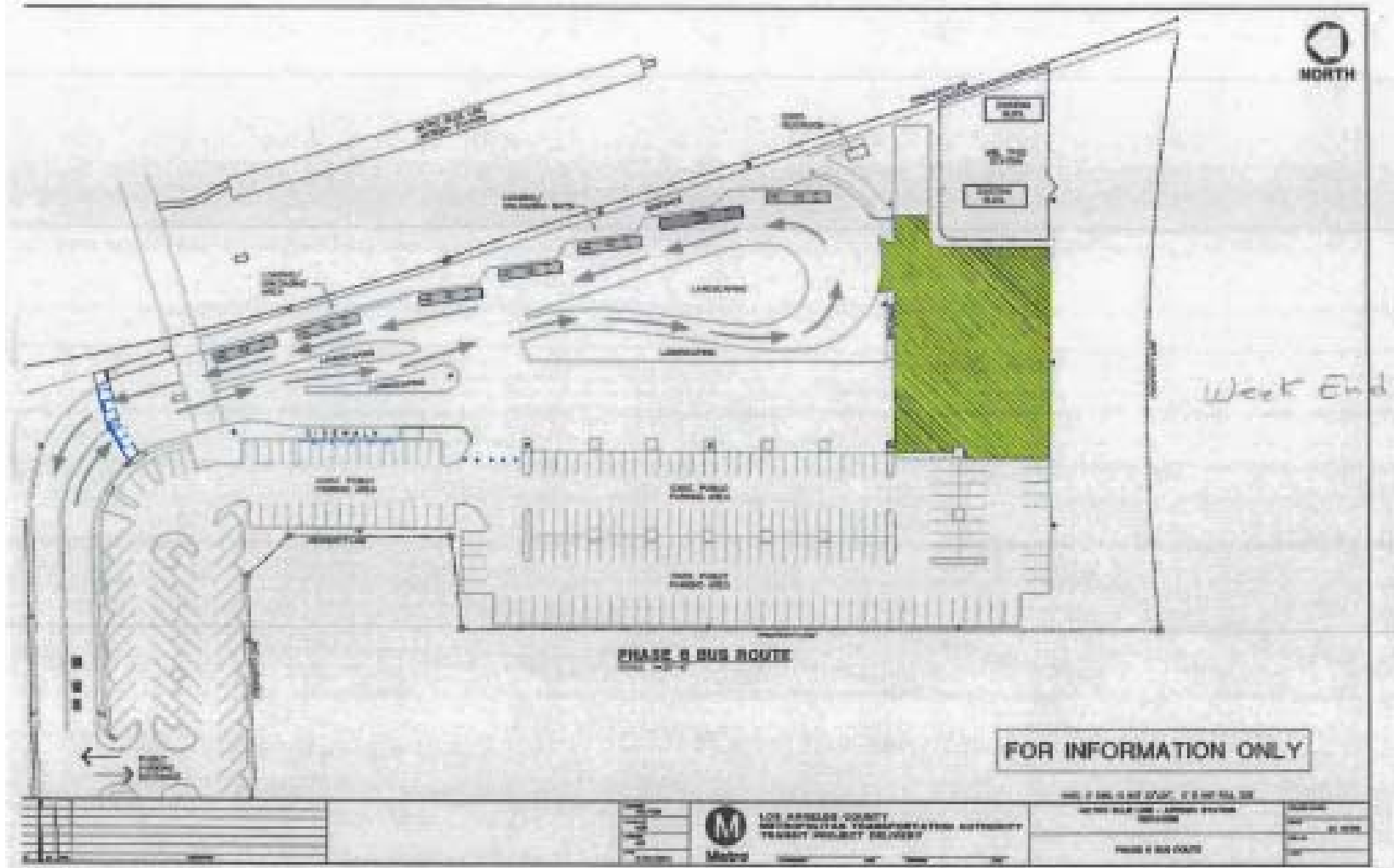
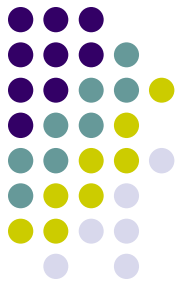
Artesia Blue Line Construction Phase 4



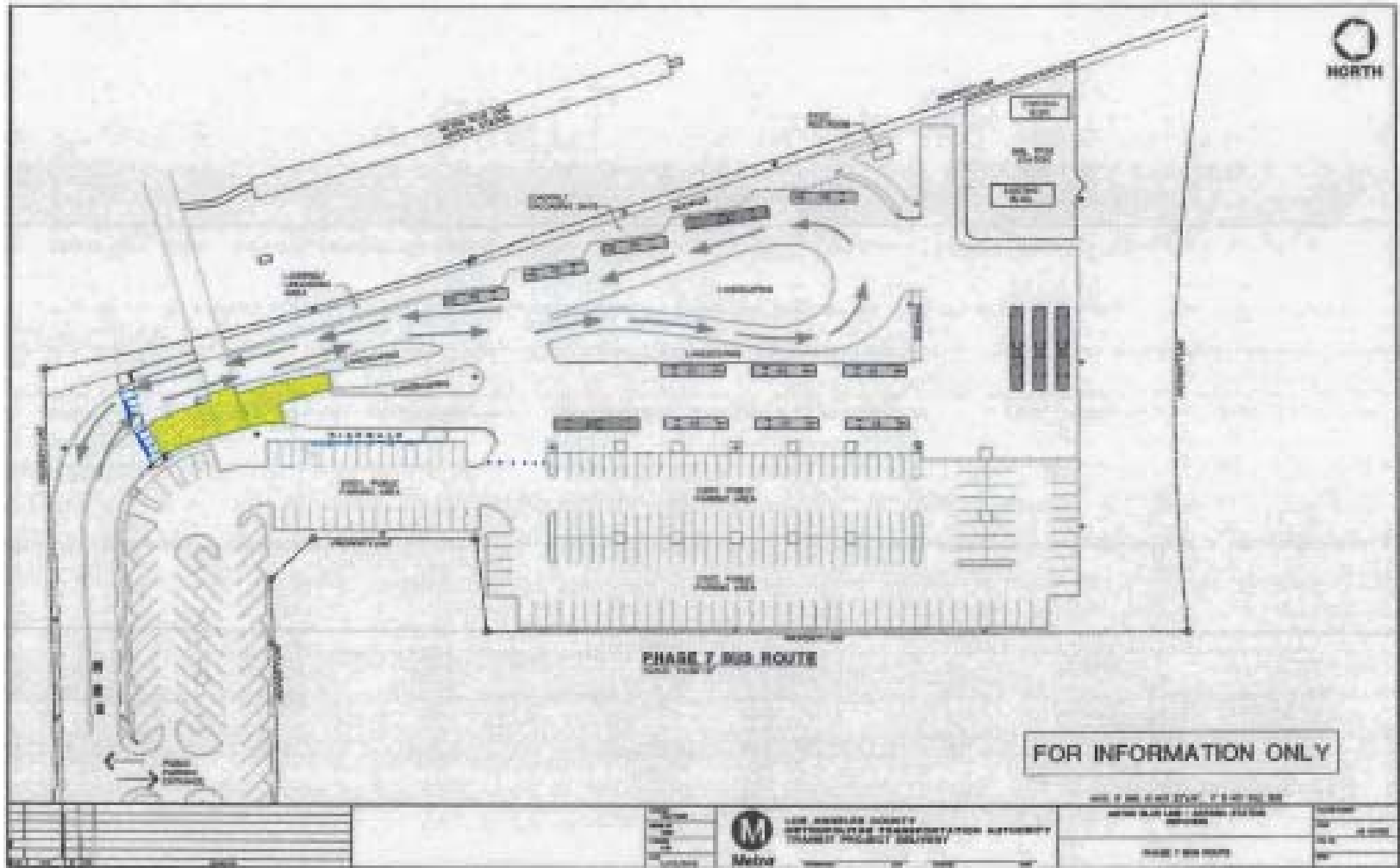
Artesia Blue Line Construction Phase 5



Artesia Blue Line Construction Phase 6



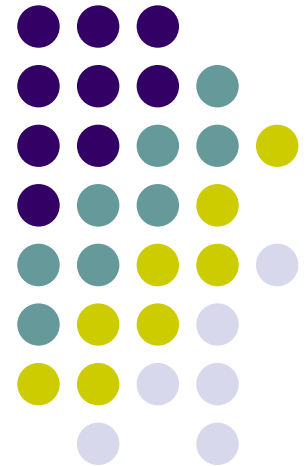
Artesia Blue Line Construction Phase 7



Construction Activities at the Metro Artesia Blue Line Station

Phase 1

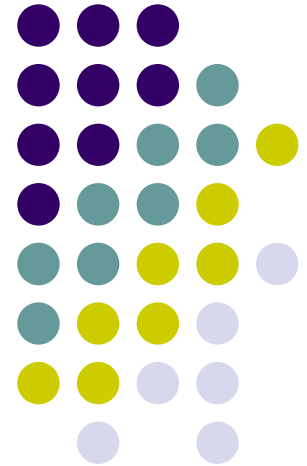
Road Closed to Autos after 1st Driveway



Construction Activities at the Metro Artesia Blue Line Station

Phase 1

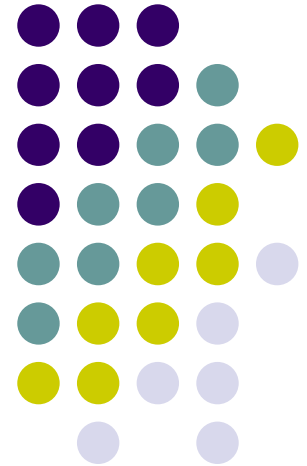
Temporary Crosswalk Constructed, Median Removed



Construction Activities at the Metro Artesia Blue Line Station

Phase 1

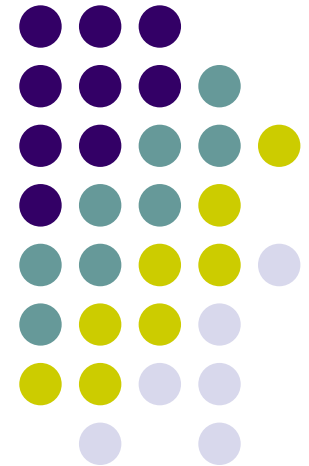
Temporary Sidewalk Constructed



Construction Activities at the Metro Artesia Blue Line Station

Phase 1

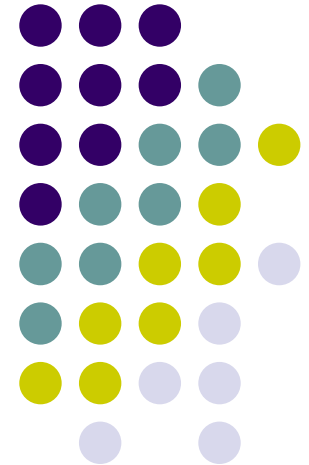
Kiss-n-Ride area Converted to Passenger Drop Off Area



Construction Activities at the Metro Artesia Blue Line Station

Phase 2

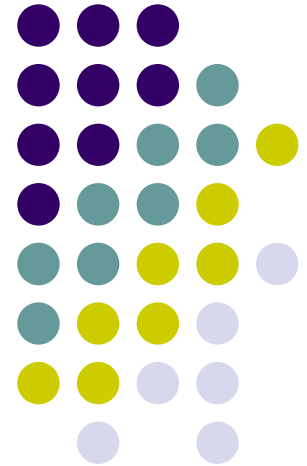
Repaving on Main Roadway. Boarding locations changed to Bay 5 (near TVM) and all riders discharged at Kiss-n-Ride area



Construction Activities at the Metro Artesia Blue Line Station

Phase 2

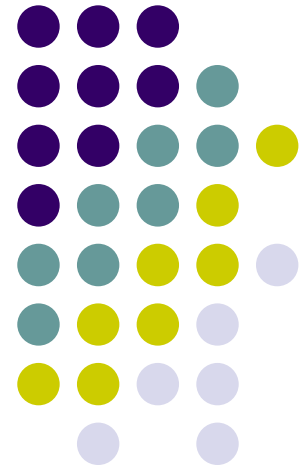
**Fencing put up to prevent customers from
crossing roadway in construction zones
and bus operations roadway**



Construction Activities at the Metro Artesia Blue Line Station

Phase 3

Repaving of bus roadway in front of station entrance



Construction Activities at the Metro Artesia Blue Line Station

Phase 3

**Bus Bay 5 (closest to entrance)
closed, all buses using Bays 1 – 3,
CSUDH using Bay 4**

