

# San Fernando Valley Service Sector Governance Council

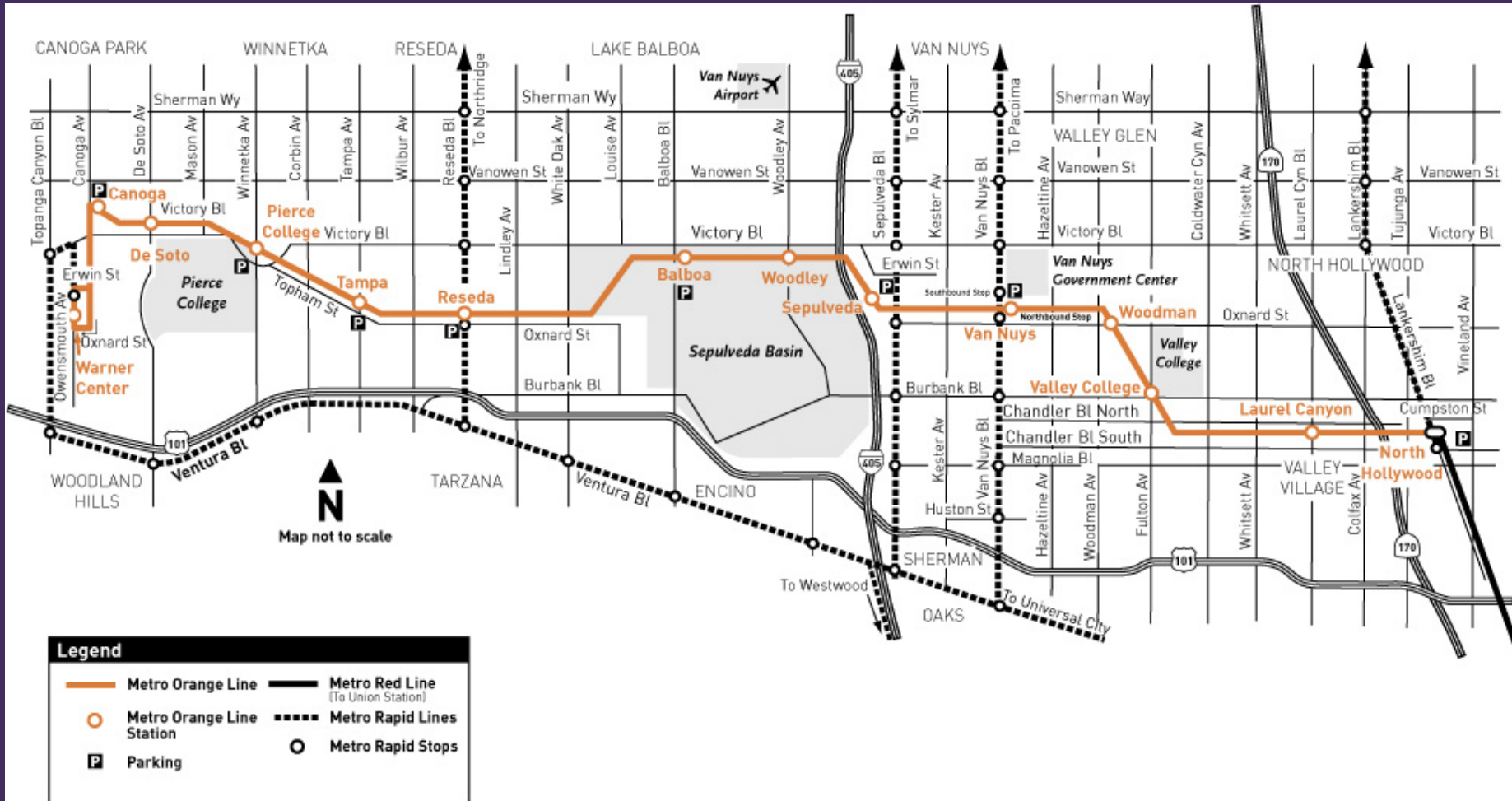


## METRO ORANGE LINE UPDATE

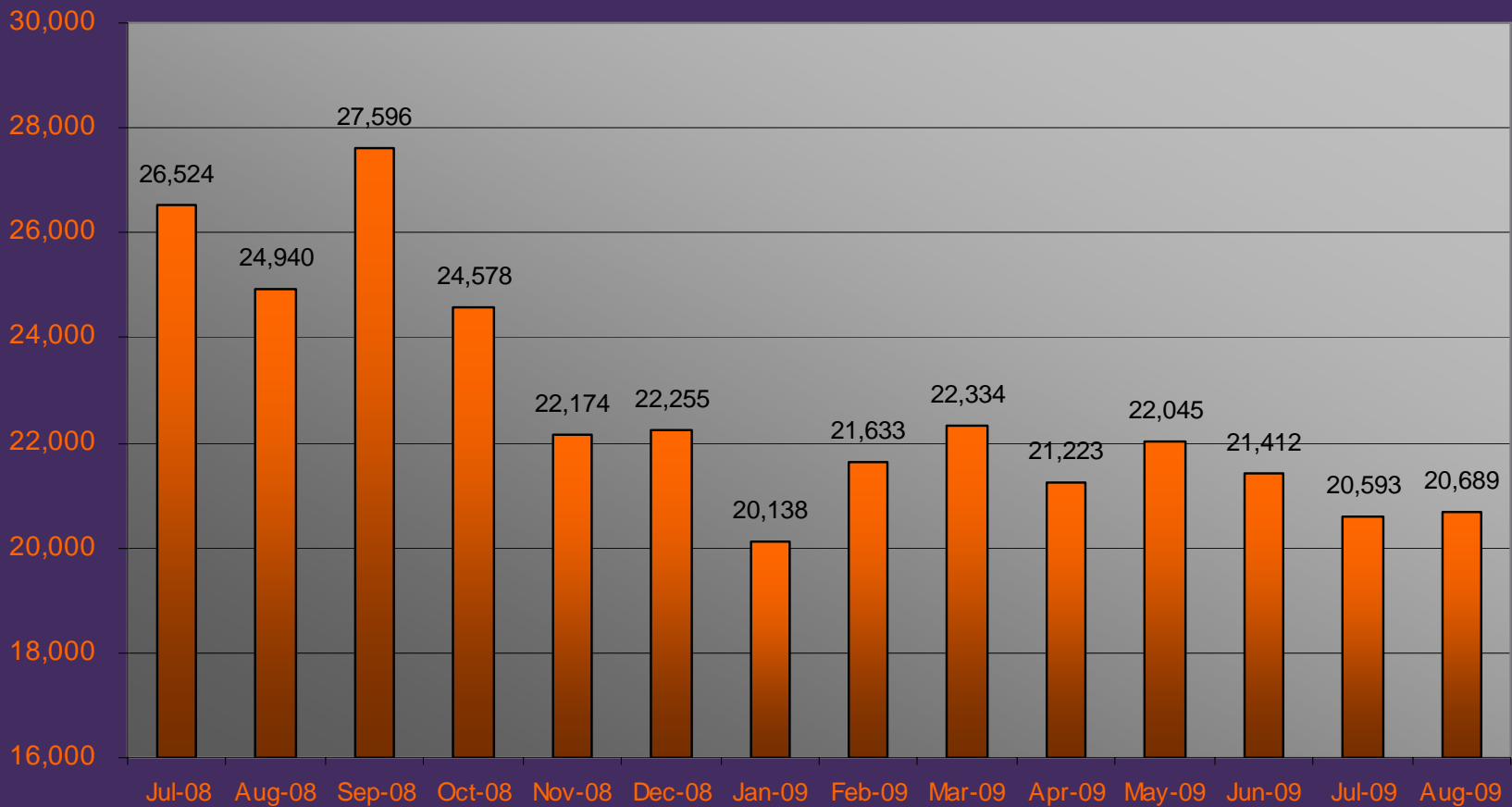
Presented By: Maria Reynolds

October 7, 2009

# Current Orange Line Route Map

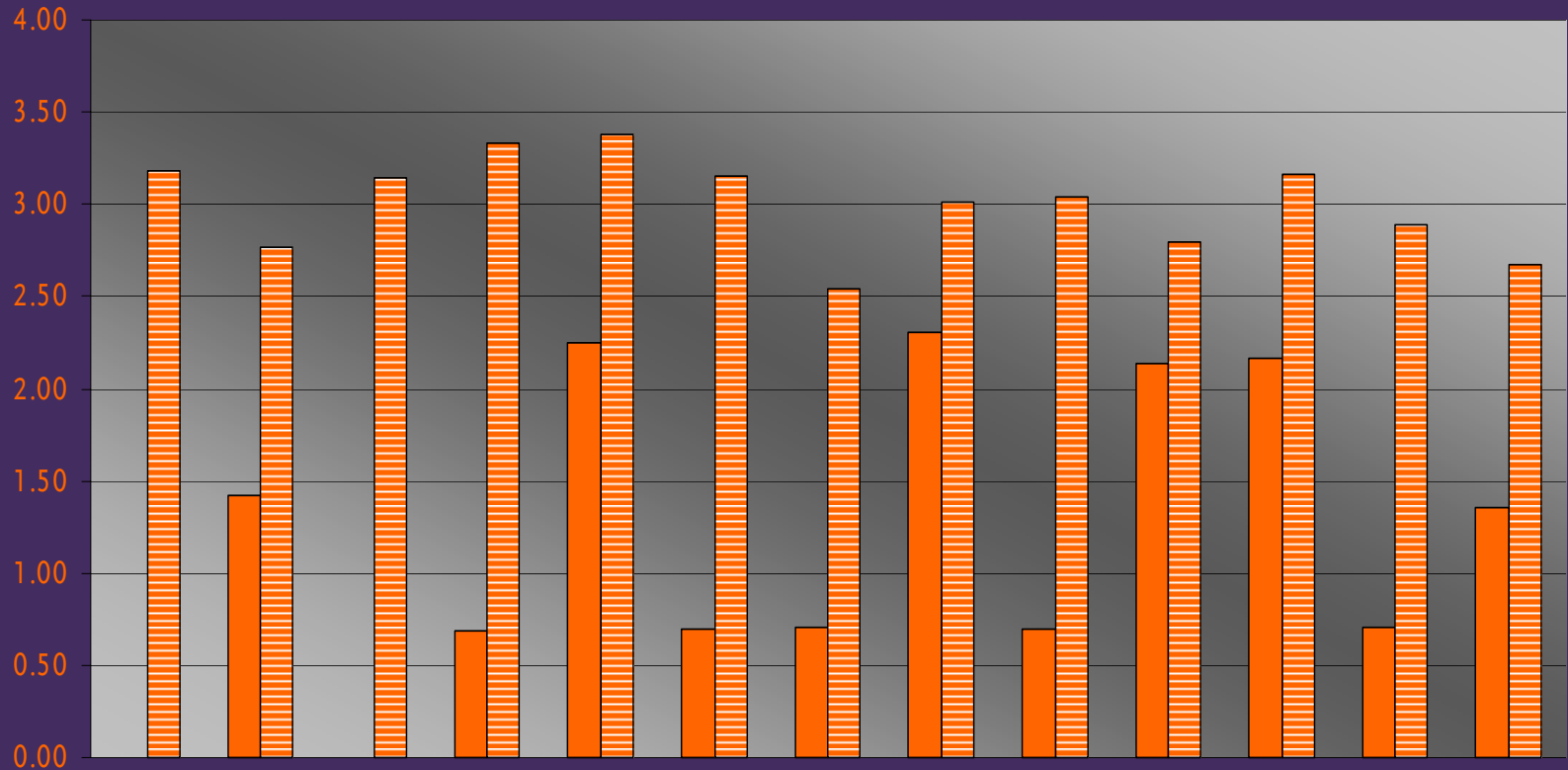


# Orange Line Average Weekday Boardings



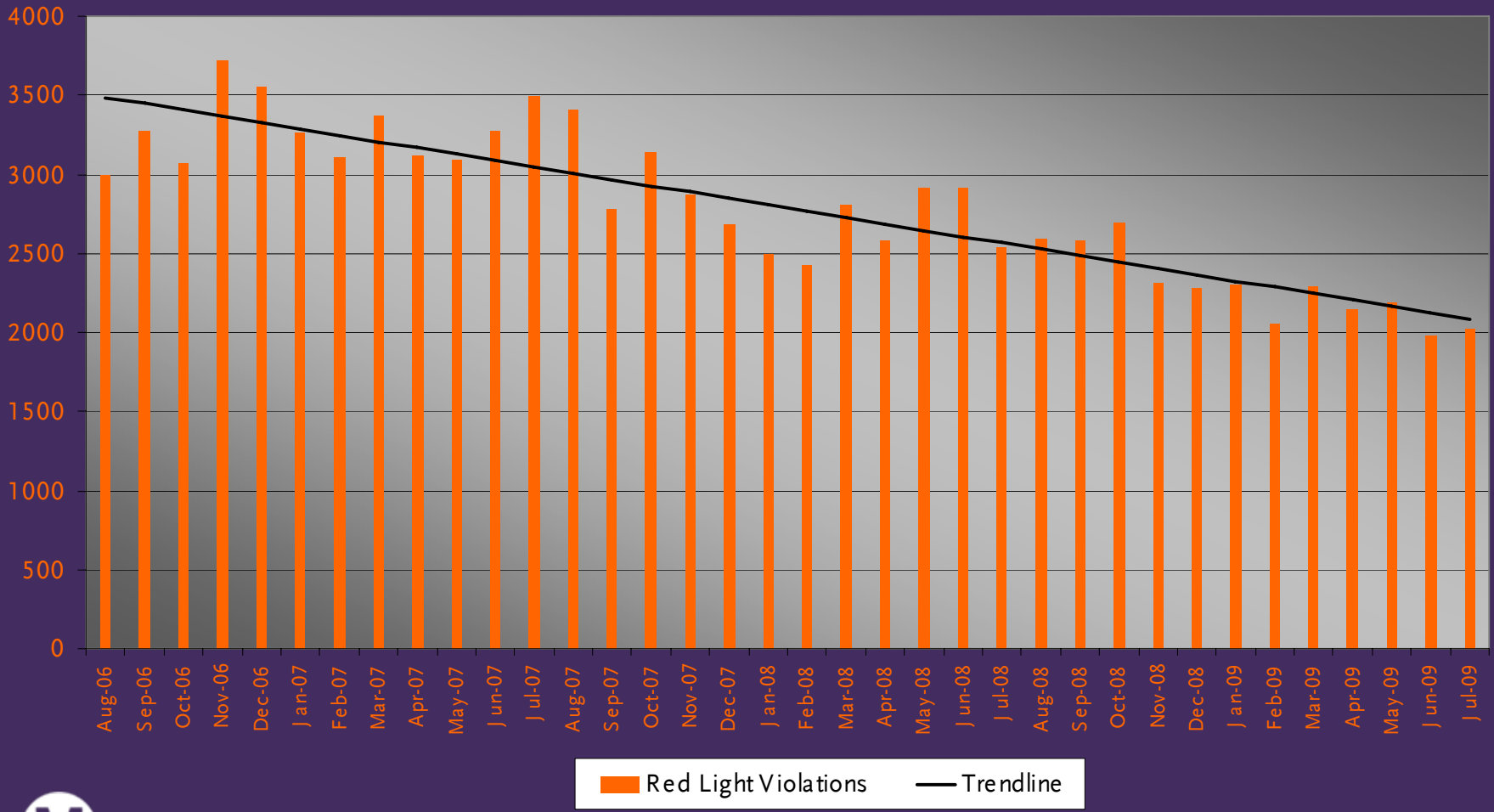
# Orange Line vs. All Metro Lines

## Accidents per 100,000 miles



	Jul-08	Aug-08	Sep-08	Oct-08	Nov-08	Dec-08	Jan-09	Feb-09	Mar-09	Apr-09	May-09	Jun-09	Jul-09
■ Metro Orange Line	0.00	1.42	0.00	0.69	2.25	0.70	0.71	2.31	0.70	2.14	2.16	0.71	1.36
▨ All Metro Lines	3.18	2.77	3.14	3.33	3.38	3.15	2.54	3.01	3.04	2.80	3.16	2.89	2.67

# Red Light Camera Violations



# Highlights of OL Northern Extension Project



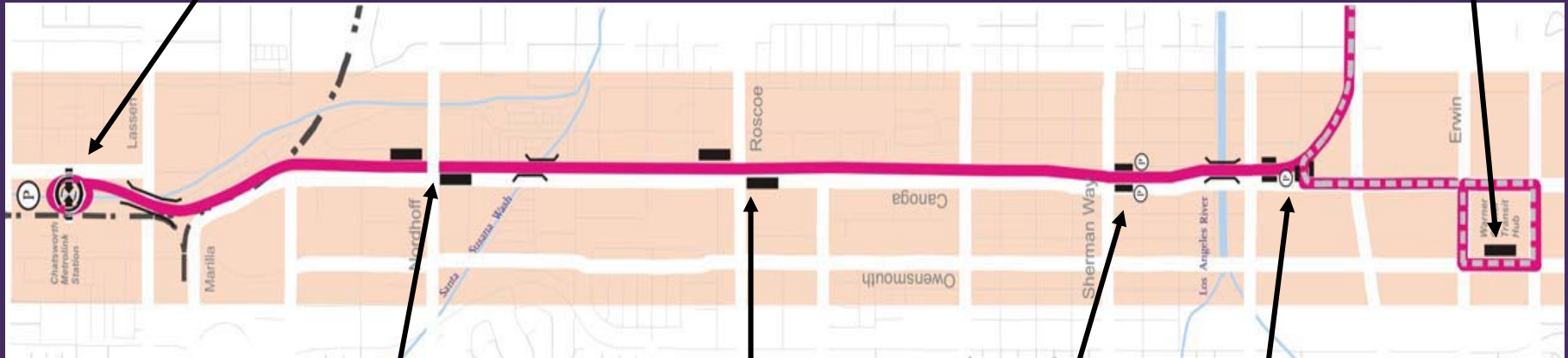
- **4-mile Canoga Extension Planned to open in 2012**
- **\$216.5 million dollar budget**
- **Groundbreaking took place on June 24, 2009 at North Parking Lot site near Chatsworth Metrolink Station**
- **Stations added at Sherman Way, Roscoe, Nordhoff, and Chatsworth Metrolink Station**
- **Parking available at Sherman Way (207 spaces) and Chatsworth Metrolink Stations (610 spaces)**
- **Landscaping will mirror current line**

# 4-Mile Canoga Northern Extension



Chatsworth  
Metrolink  
Station and  
Orange Line  
Terminal

Warner  
Center  
Station

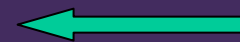


Nordhoff  
Station

Roscoe Station

Sherman  
Way  
Station

Canoga  
Station



North

# Real Estate Status on the Northern Extension



- 82 leases and 7 licenses on MOL Extension.
- 4 tenants will be permitted to co-exist with line.
- 78 terminated leases represent 23 signboard leases and 55 ground leases.





# Progress of North Parking Lot (Chatsworth Station)

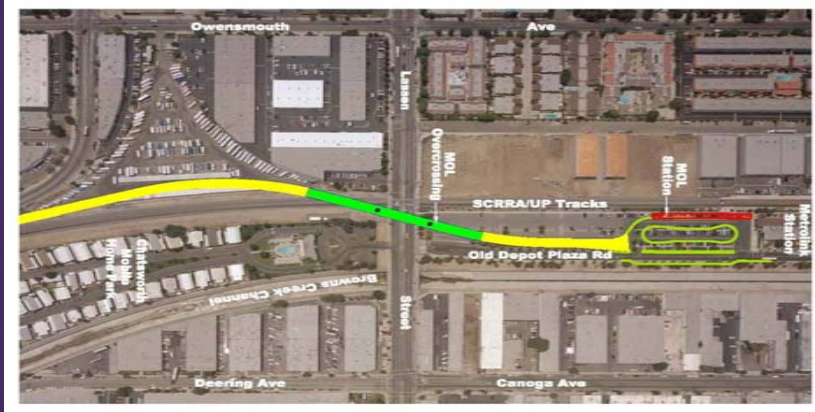


- New parking lot constructed north of the existing Chatsworth Metrolink Station.
- Completion of this lot is required before the south parking lot is modified to include the new MOL station platforms.

# Lassen Overcrossing



- In August 2009, the Lassen/RR overcrossing bridge over active railroad tracks was added to the design build contract.
- Partial closing of Lassen Street will begin in early 2010 to accommodate construction.



# Conclusion



- The Orange Line continues to thrive!
- Low accident rate & steady ridership.
- Excitement is building about the 4-mile Northern Extension.
- Questions or comments?

