

I-405 Sepulveda Pass Widening Project

San Fernando Valley Governance Council Presentation

January 6, 2010

ITEM 8



Metro



Project Overview

- 10 Mile Northbound HOV Lane
- Southbound Lane Standardization
- 27 Ramp Improvements
- Widening of 13 Bridge Structures
- 3 New Bridge Structures

Project Overview - Continued

- 18 Miles of Retaining Wall and Sound Wall
- \$1.034 Billion
- Project Completion 2013
- Metro Board of Directors awarded project to Kiewit Pacific Company on April 24, 2009
- Issued Notice to Proceed June 2, 2009
- Project Commencement August 31, 2009



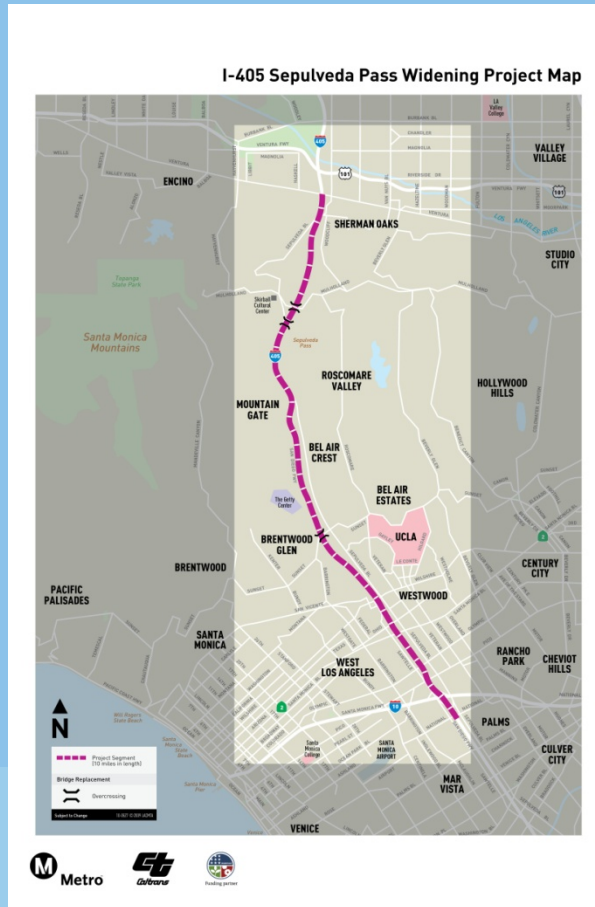
Project Boundaries

Northern Boundary

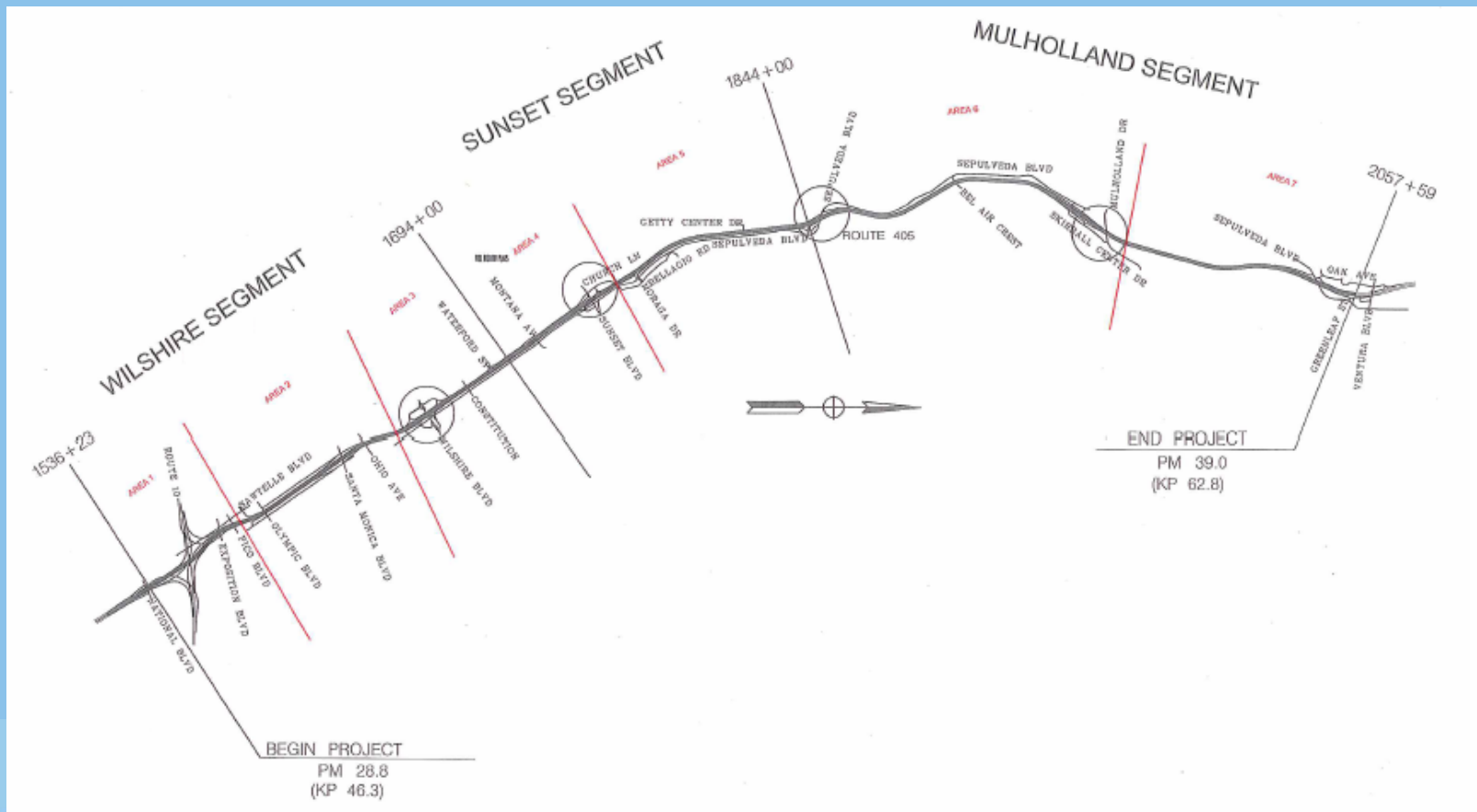
Greenleaf St. – South of the Ventura Freeway (U.S. 101)

Southern Boundary

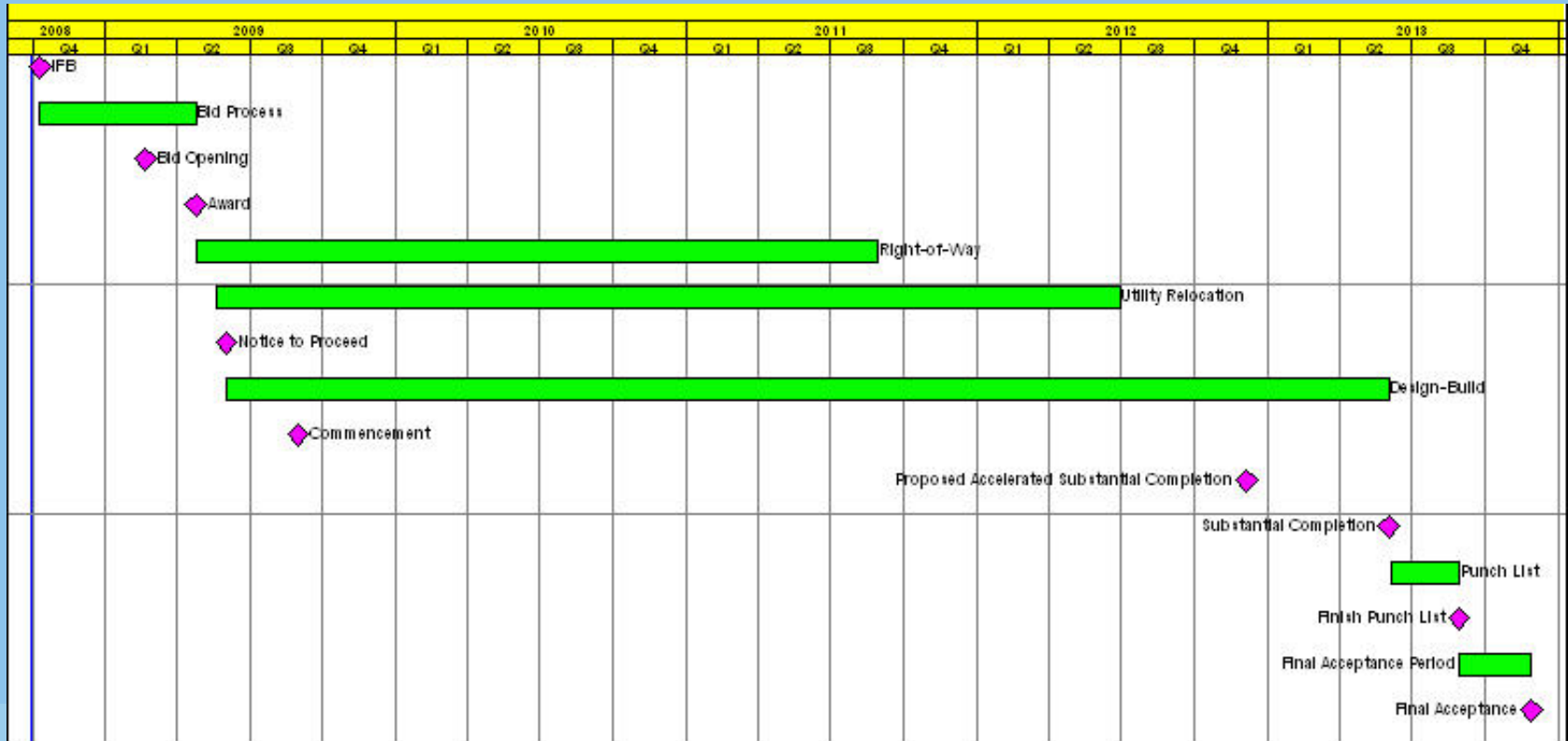
National Blvd., South of the Santa Monica-Rosa Parks Freeway (I-10)



Project Approach



Design/Build Project



Project Milestones

- Mulholland Bridge Replacement
- Sepulveda Blvd.
- Ramp Improvements at Wilshire, Sunset and Skirball
- Construct Retaining Walls
- MWD 96" Water Line Realignment

Pre-Construction Activities

- Geotechnical Investigation
- Inspection and Cleaning of Storm Drains and Sewers
- Survey Work
- Mobilization
- Construction Yard and Trailer Set Up
- Conceptual Design
- Pre-Construction Surveys

Construction Schedule

Early Work (Start mid-late December 2009)

- Construction Area Signs
 - Start December 2009
- Profile Grinding
 - Start 2nd week of January 2010
- Lane Modifications/Re-striping
 - Start 2nd week of January 2010
- Concrete Barrier Installation
 - Start 2nd week of February 2010
- Utility Relocations
 - Start January 2010



Metro



Construction Schedule Continued

Main Line Work (February/March 2010)

- 17 Retaining Walls along Sepulveda Blvd.
 - March 2010 to July 2012
- Box Culvert Protection/Relocation
 - TBD
- Wilshire Blvd. Interchange
 - March 2010 to October 2012

Construction Schedule Continued

Main Work (February/March 2010 Continued)

- Sunset Overcrossing Replacement
 - March 2010 to June 2011
- Soil Nail Walls/Excavation along Sepulveda Pass
 - March 2010 to February 2011

Upcoming Activities

- Skirball Overcrossing Replacement
 - June 2010 to August 2011
- Mulholland Overcrossing Replacement
 - September 2010 to May 2012
- Getty Bridge Widening
 - March 2011 to September 2011
- Bel Air Crest Bridge Widening
 - June 2011 to November 2011

Construction Mitigation

- Construction Noise
 - Monitoring noise levels during construction
 - Source reduction
 - Reduction at recipient
 - Limiting night work
 - Complaint process

Construction Mitigation Continued

- Traffic Impacts
 - Outreach with CAC
 - Coordination with City and Caltrans
 - Avoid residential neighborhoods
 - Minimize Construction Vehicle Impacts
- Lighting
 - Avoid Residents
 - Limit night work

Community Relations

Construction Impact Mitigation Program

- Public Outreach
- Stakeholder Communication
- Construction Impact Mitigation
- On-going Coordination with Caltrans on commuter notifications



Community Relations Continued

Resolving Issues

- Regular hours work with Management team to address concerns
- After hours work with field staff to address concerns
- On call 24/7 for emergencies



The End

Metro Community Relations

Project Hotline: (213) 922-3665

l405@metro.net

www.metro.net/l-405

