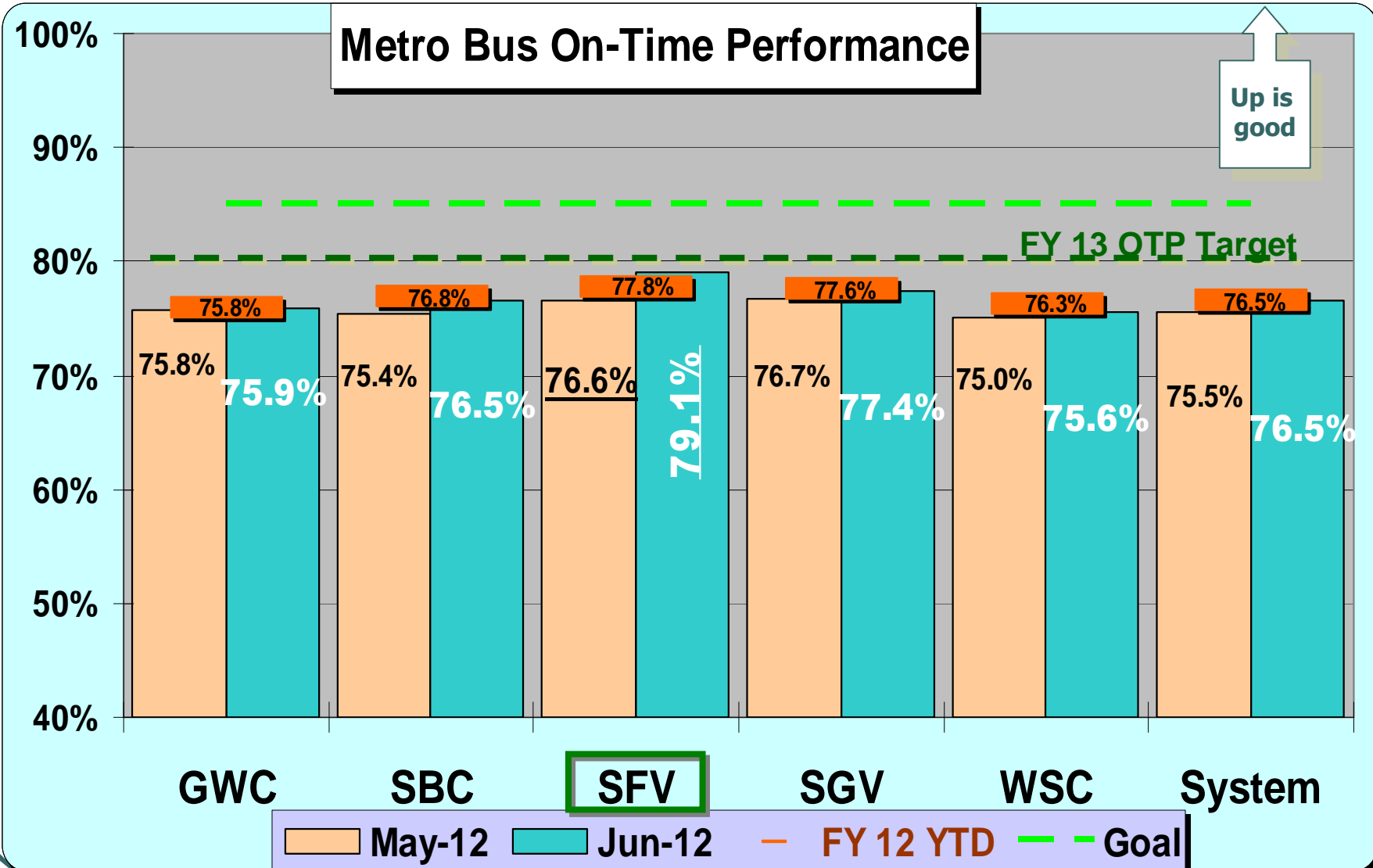


***Metro San Fernando Valley  
Service Council  
August 1, 2012 Meeting***

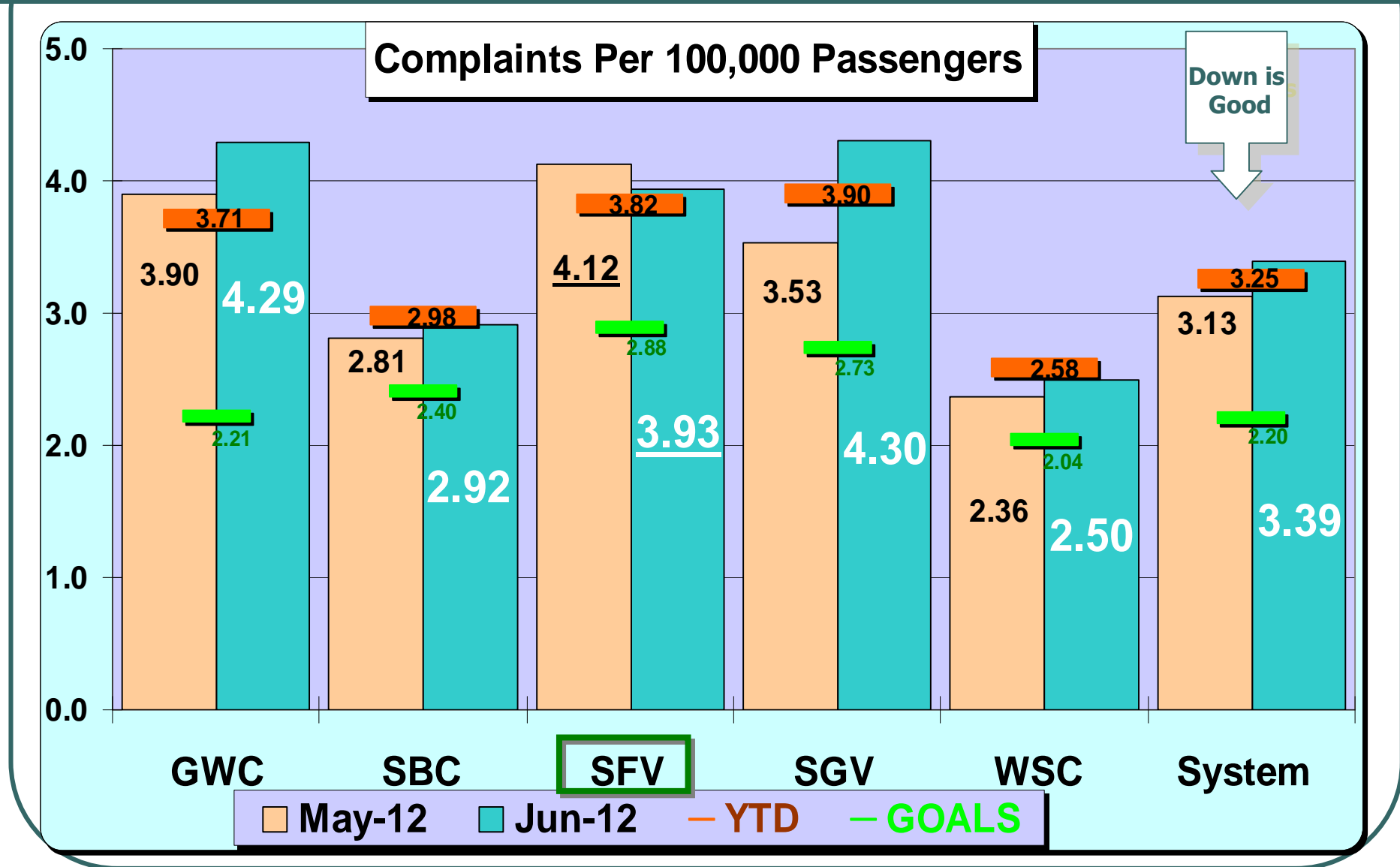
***Performance Report on  
June 2012 Service***



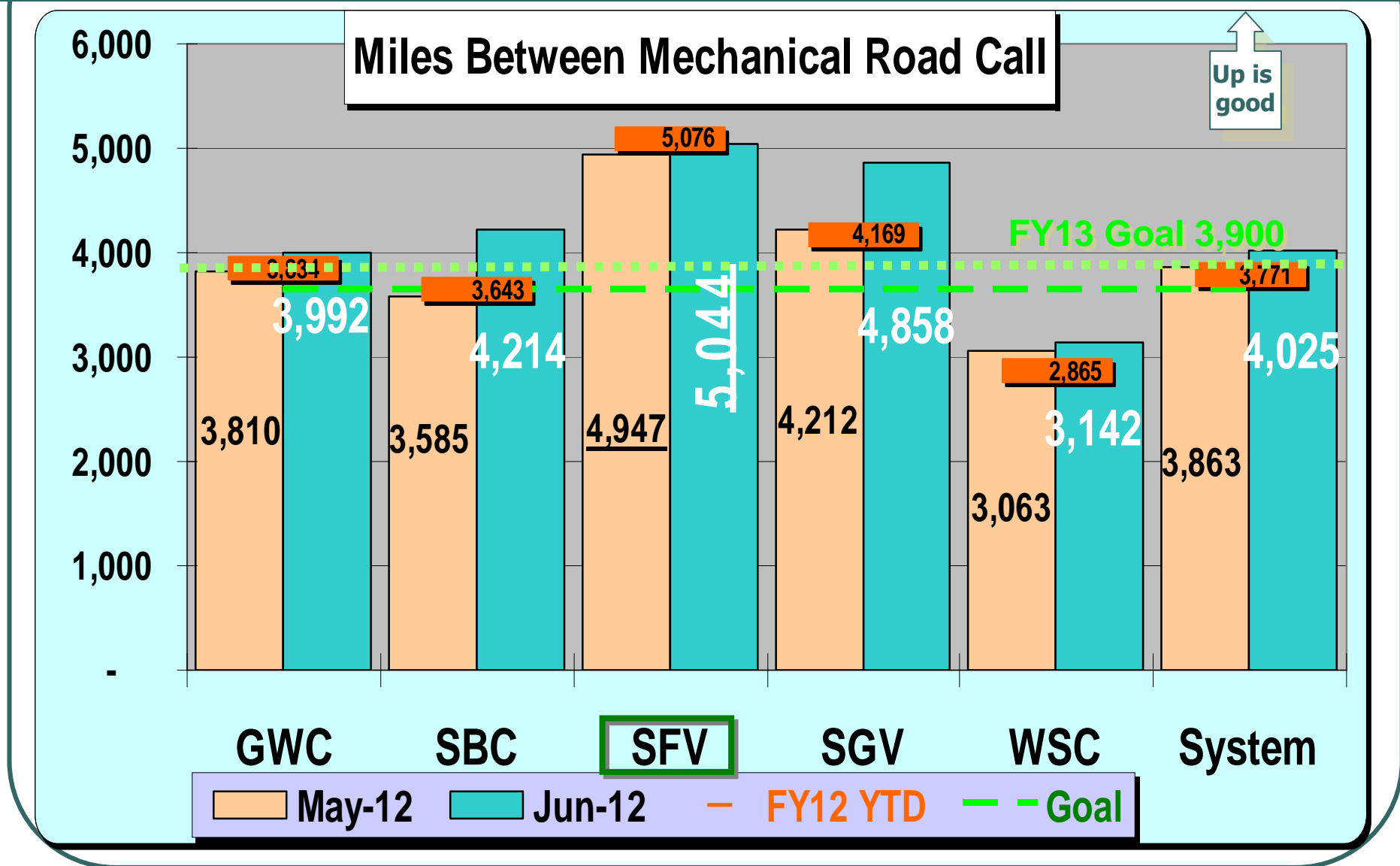
# SFV Service Council August 2012 Meeting



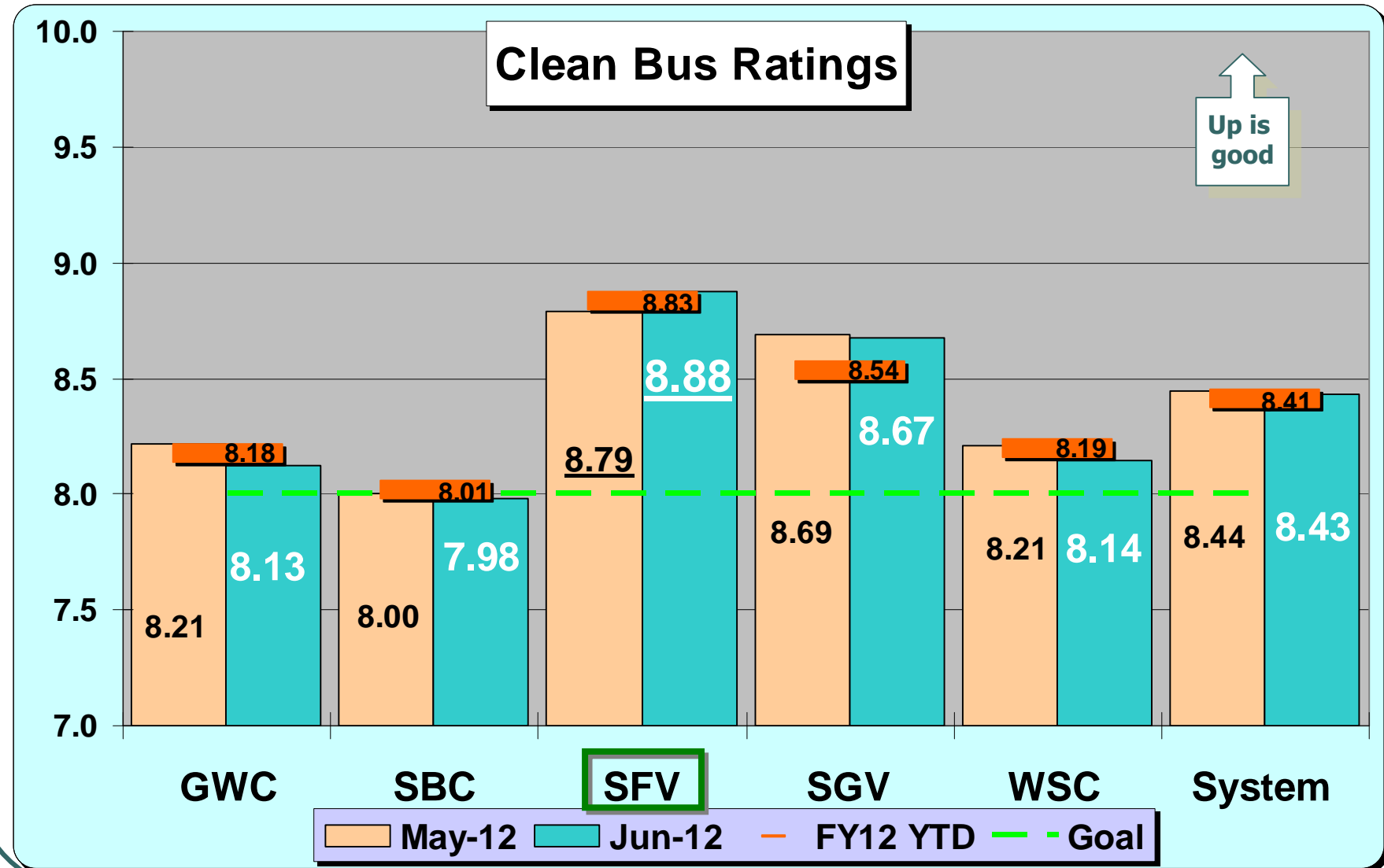
# SFV Service Council August 2012 Meeting



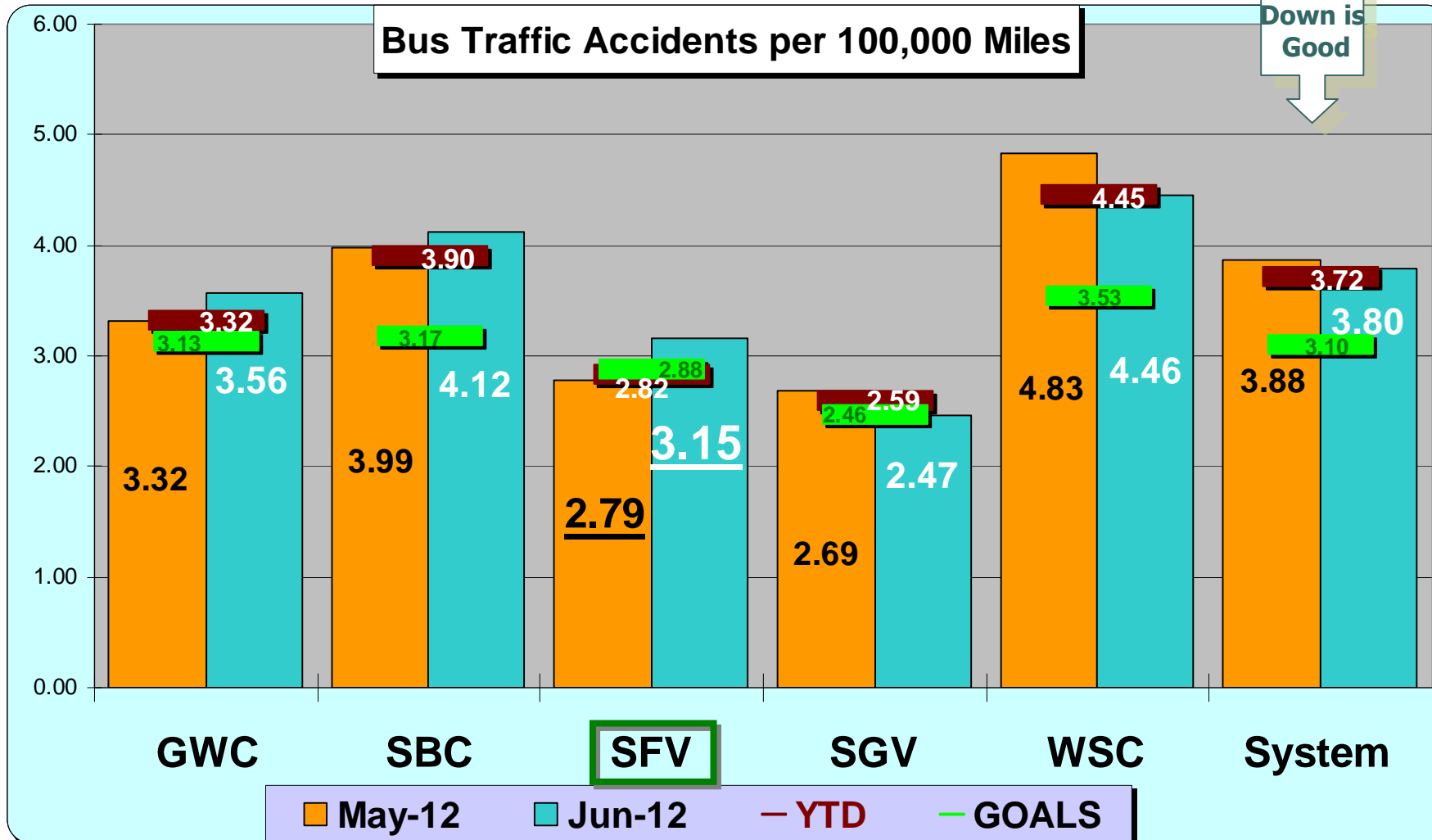
# SFV Service Council August 2012 Meeting



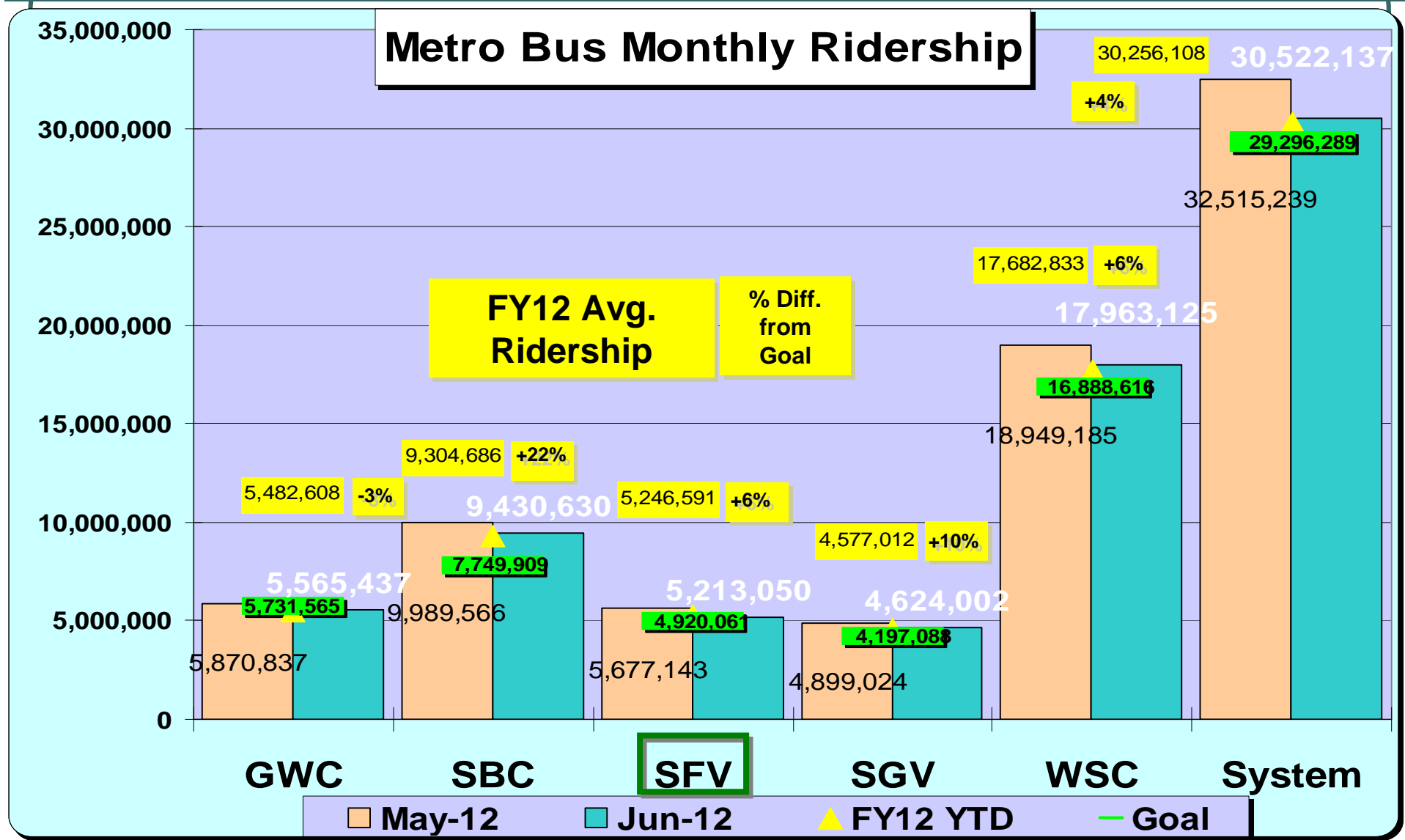
# SFV Service Council August 2012 Meeting



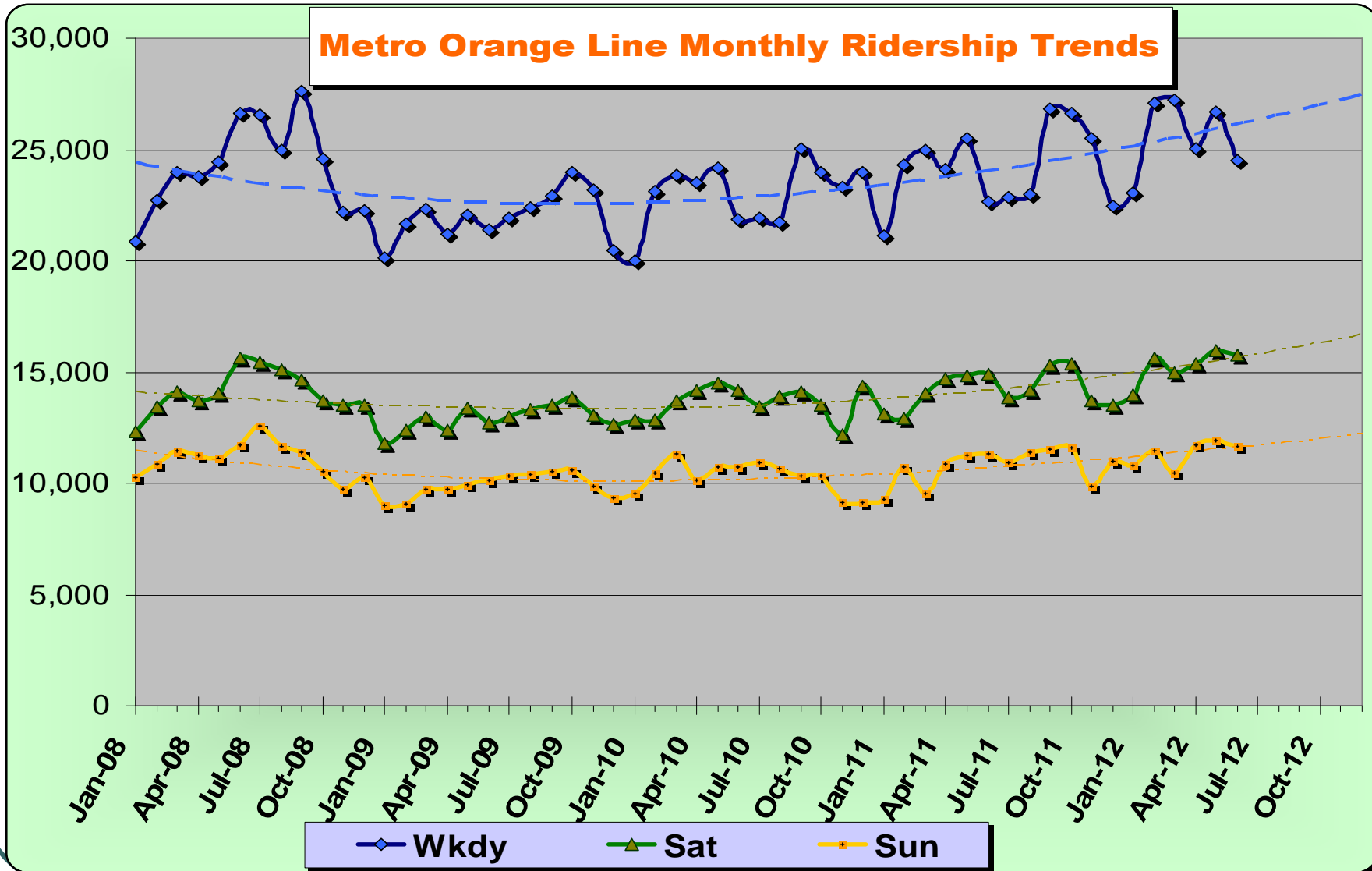
# SFV Service Council August 2012 Meeting



# SFV Service Council August 2012 Meeting

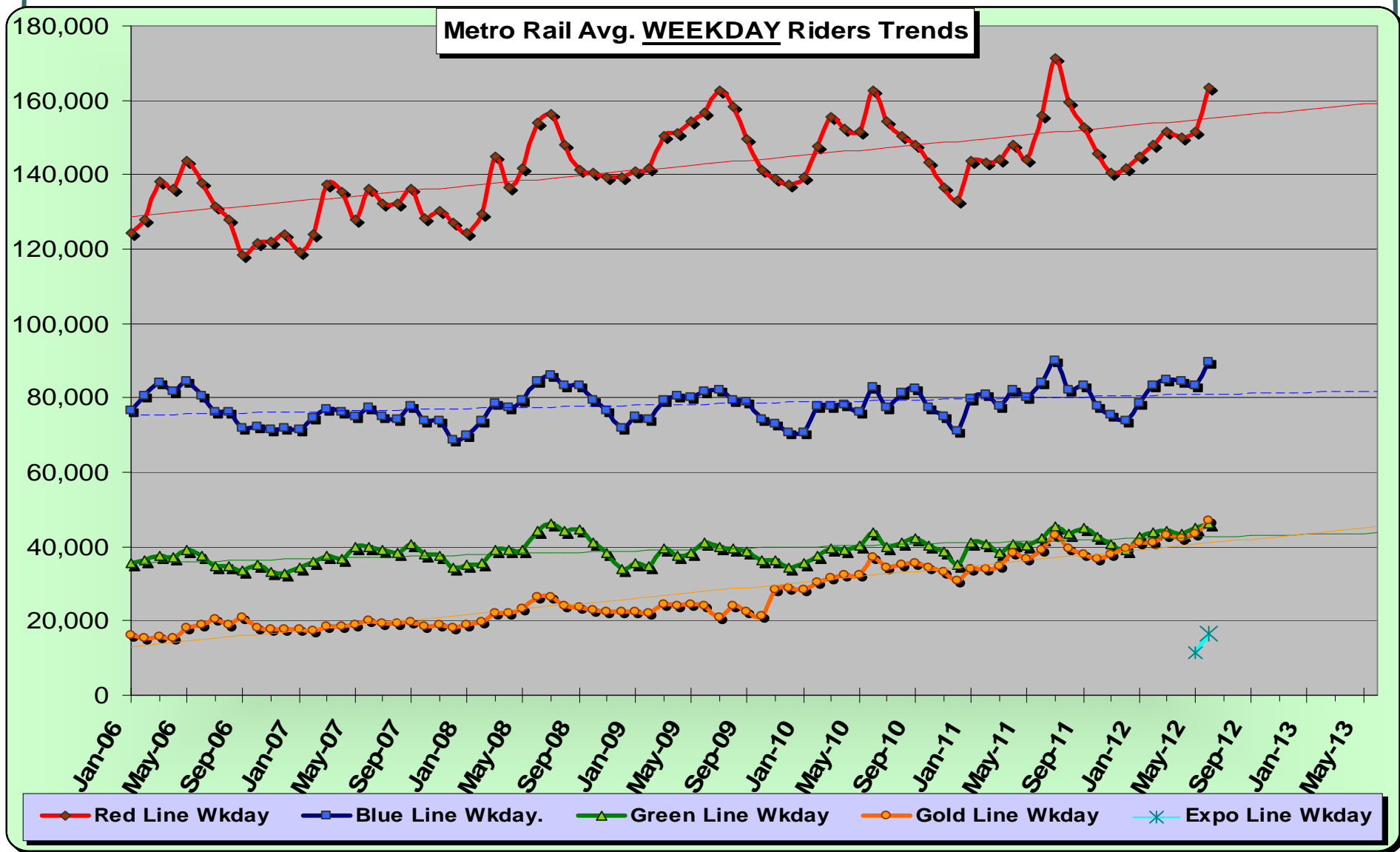


# SFV Service Council August 2012 Meeting





# SFV Service Council August 2012 Meeting



# SFV Service Council August 2012 Meeting

## Bus Station Cleanliness Evaluation Scores

Bus Stations Evaluated	Dec. 2011	June/July 2012	Change	Agency	Grade
	Score	Score	Latest - Earliest		
Artesia Blue Line Bus Sta.	7.4	7.5	1.1	Metro	C
Aviation Green Line Bus Sta.	6.1	7.4	1.4	Metro	C
Burbank Metrolink Bus Sta.	8.5	8.5	0.5	Burbank	B
Culver City Sta.	7.6	7.1	-0.4	Culver City	C
Cal State LA Busway Sta.	7.6	7.6	0.0	Metro	C
Cal State LA Local Bus Sta.	8.3	8.6	0.3	LADOT	B
Del Amo Blue Line Bus Sta.	8.4	8.0	-0.4	Metro	B
El Monte Bus Sta.	7.5	7.5	-0.1	Metro	C
Harbor-Gateway Transit Ctr.	8.1	7.2	-0.9	Metro	C
Inglewood Bus Sta.	8.4	8.3	-0.1	Inglewood	B
LAX City Bus Sta.	5.3	7.8	2.5	Metro	C
Norwalk Green Line Bus Sta.	7.2	7.6	0.4	Metro	C
North Hollywood Red Line Bus Sta.	7.1	7.5	0.4	Metro	C
Patsaouras Bus Plaza	8.2	7.3	-0.9	Metro	C
Pico-Rimpau Bus Ctr.	7.7	8.2	0.5	Metro	B
Rosa Parks Bus Sta.	7.8	7.4	-0.4	Metro	C
South Bay Galleria Bus Ctr.	6.4	7.2	0.8	Redondo Beach	C
Sierra Madre Gold Line Bus Sta.	7.2	8.0	0.8	Metro	B
Universal Red Line Bus Sta.	6.5	8.2	1.7	Metro	B
Harbor-Century Fwy, Silver Line Sta.	8.2	7.7	-0.5	Metro	C
	7.46	7.73	0.27	AVG.	C

