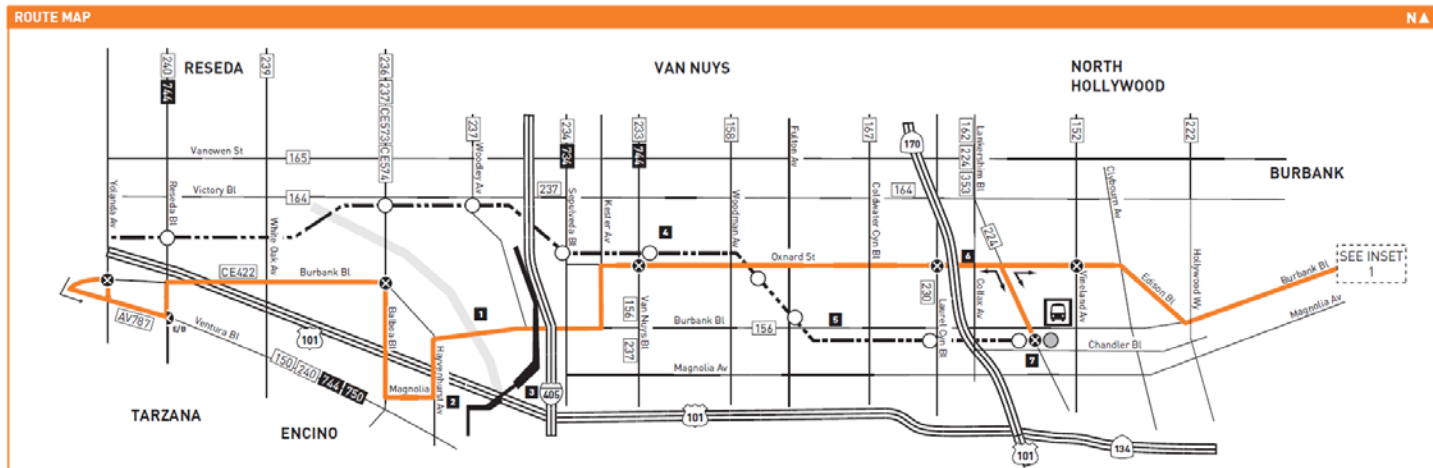


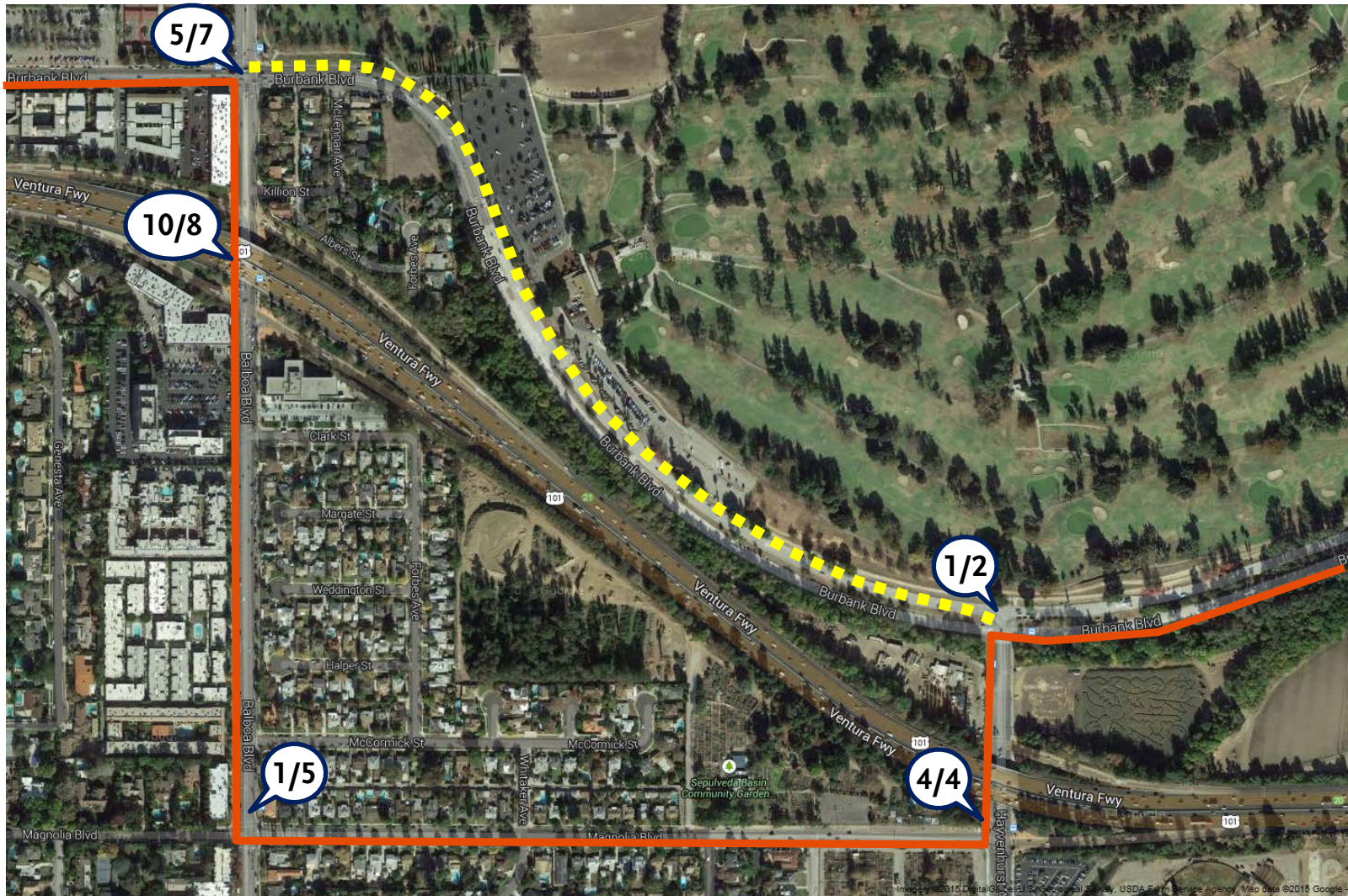
# Proposed Minor Route Modification to Line 154

# Background

- 🚗 Line 154 was rerouted one year ago to serve the Hayvenhurst Av Park and Ride Lot.
- 🚗 Time was added to the schedule but 4 more minutes are needed in each direction to maintain schedule.
- 🚗 One additional bus will be needed to maintain the current headway.
- 🚗 Magnolia Bl residents have complained about bus noise by their single family homes.
- 🚗 Few patrons are using the Park and Ride connection (4 on, 4 off all day).
- 🚗 Operators are having difficulty merging from northbound Balboa Bl to westbound Burbank Bl during heavy traffic.



# Line 154 Ridership on Magnolia Bl



**Metro**

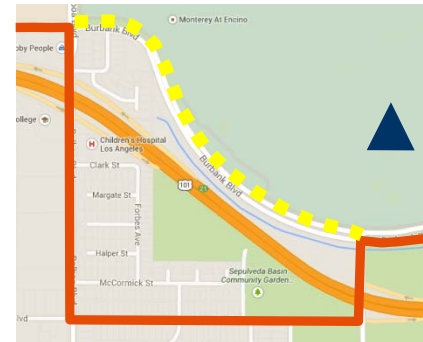
— Current route of Line 154

--- Proposed Route of Line 154

##/## Bidirectional Ridership

# Alternatives

- 🚌 Add an additional bus at approximately \$517,650/ year.
- 🚌 Widen the headway to 60+ minutes all day.
- 🚌 Return route to Burbank Bl.



- 🚌 Recommendation -Return route to Burbank Bl.

# For consideration

## Lines with Frequencies Greater than 60 Minutes

<b>SFV Lines with Greater Than 60 Minute Frequency</b>										
Lines	156	154	158	169	183	222	236/ 237	239	242/ 243	244/ 245
Ridership	1,672	1,052	2,261	2,248	2,259	1,783	2,595	907	1,910	2,977
Max Headway (in minutes)	68	65	67	66	67	61	71	75	65	71
Number of Trips >60mins	5	6	4	9	3	2	26	13	11	7

## System-Wide Lines with Greater Than 60 Minute Frequency

Lines	102	120	126	127	130	205	209	217	220	246	266	344	254	264	266	450	550	611	620
Ridership	2,837	4,361	239	967	3,763	4,778	1,100	8,039	321	2,987	5,694	1,783	1,010	3825	5694	1,759	1,763	1,811	253
Max Headway (in minutes)	61	64	67	61	61	61	64	62	61	63	70	63	67	69	70	63	63	63	62
Number of Trips >60mins	1	12	4	6	1	3	2	2	3	2	4	1	9	9	3	2	1	6	4

# Discussion