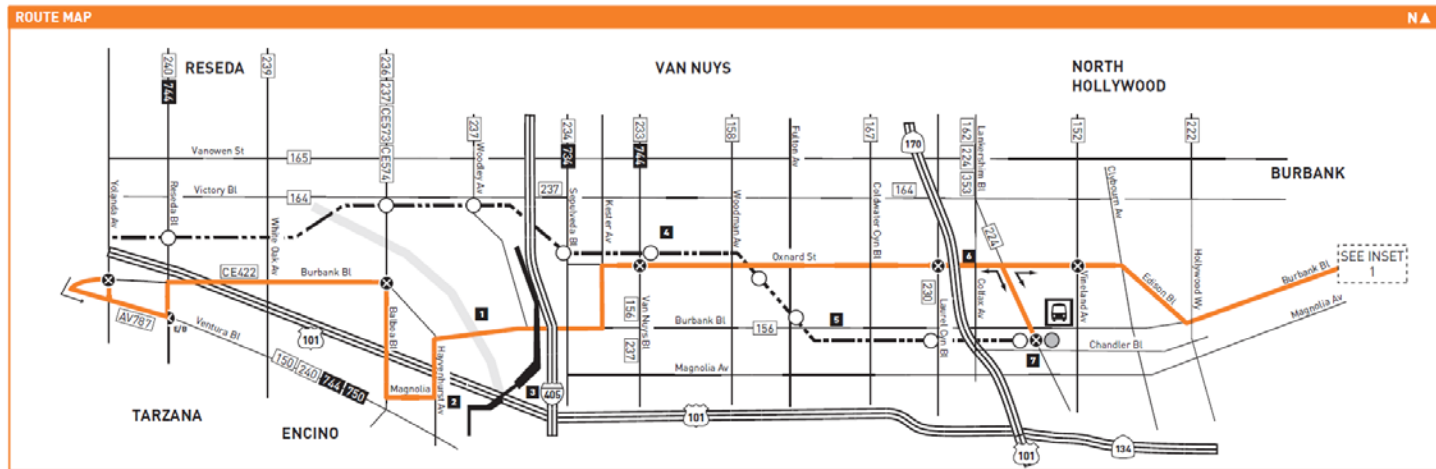


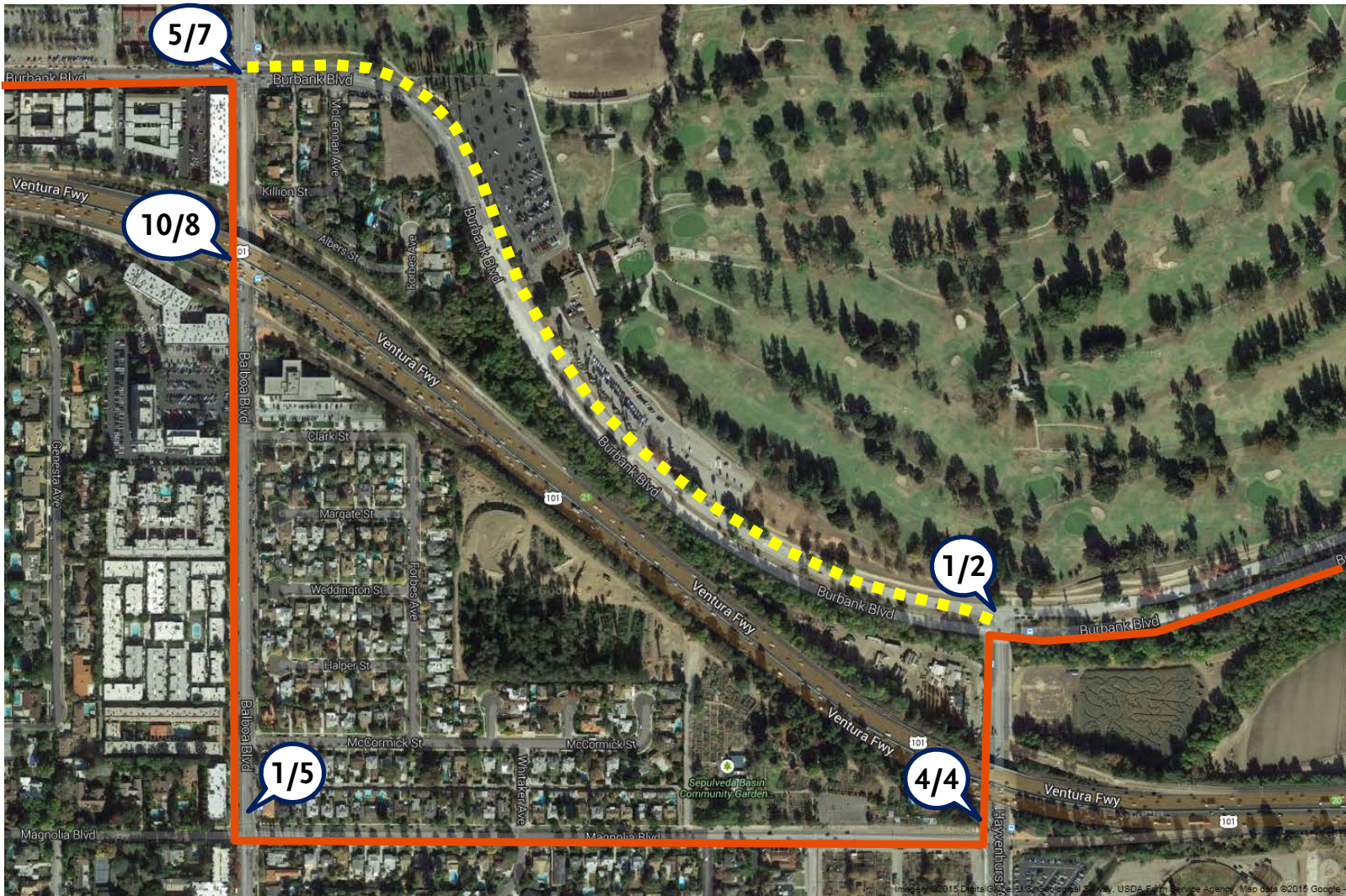
# Update On Modification to Line 154

# Background

- Line 154 was rerouted one year ago to serve the Hayvenhurst Av Park and Ride Lot.
- Time was added to schedule but 4 additional minutes are needed in each direction.
- One additional bus will be needed to maintain the current headway.
- Magnolia Bl residents have complained about the bus noise near their homes.
- Very few patrons are using the Park and Ride connection (4 on, 4 off all day).
- Total of 15 boardings at 3 stops along new route segment. Over 1,000 riders per day board Line 154 outside of the created route deviation.
- Operators are having difficulty merging from northbound Balboa Bl to westbound Burbank Bl. during heavy traffic.



# Line 154 Daily Ridership on Magnolia Bl (out of 1,052 Boardings)



**Metro**

— Current route of Line 154

--- Proposed Route of Line 154

## Daily Bidirectional Ridership



# For Consideration

## Lines with Frequencies Greater than 60 Minutes

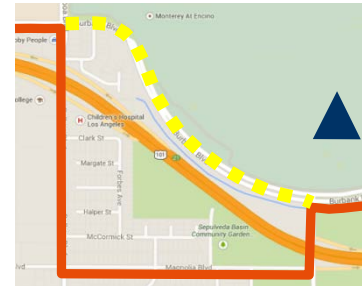
| <b>SFV Lines with Greater Than 60 Minute Frequency</b> |       |       |       |       |       |       |             |     |             |             |
|--|-------|-------|-------|-------|-------|-------|-------------|-----|-------------|-------------|
| Lines  | 156   | 154   | 158   | 169   | 183   | 222   | 236/<br>237 | 239 | 242/<br>243 | 244/<br>245 |
| Ridership  | 1,672 | 1,052 | 2,261 | 2,248 | 2,259 | 1,783 | 2,595       | 907 | 1,910       | 2,977       |
| Max Headway<br>(in minutes)                            | 68    | 65    | 67    | 66    | 67    | 61    | 71          | 75  | 65          | 71          |
| Number of Trips<br>>60mins                             | 5     | 6     | 4     | 9     | 3     | 2     | 26          | 13  | 11          | 7           |

## System-Wide Lines with Greater Than 60 Minute Frequency

| Lines                       | 102   | 120   | 126 | 127 | 130   | 205   | 209   | 217   | 220 | 246   | 266   | 344   | 254   | 264  | 266  | 450   | 550   | 611   | 620 |
|-----------------------------|-------|-------|-----|-----|-------|-------|-------|-------|-----|-------|-------|-------|-------|------|------|-------|-------|-------|-----|
| Ridership                   | 2,837 | 4,361 | 239 | 967 | 3,763 | 4,778 | 1,100 | 8,039 | 321 | 2,987 | 5,694 | 1,783 | 1,010 | 3825 | 5694 | 1,759 | 1,763 | 1,811 | 253 |
| Max Headway<br>(in minutes) | 61    | 64    | 67  | 61  | 61    | 61    | 64    | 62    | 61  | 63    | 70    | 63    | 67    | 69   | 70   | 63    | 63    | 63    | 62  |
| Number of Trips<br>>60mins  | 1     | 12    | 4   | 6   | 1     | 3     | 2     | 2     | 3   | 2     | 4     | 1     | 9     | 9    | 3    | 2     | 1     | 6     | 4   |

# Alternatives

- Add an additional bus at approximately \$517,000/year.
- Widen the headway to 60+ minutes all day.
- Return route to Burbank Bl.



## Revised Staff Recommendation:

- Widen existing service frequencies to up to 70 minutes.

# Updates

- Three of four connections with Commuter Express service at Hayvenhurst and Magnolia are already being met:
  - CE 573 & 574 – Balboa/Burbank
  - CE 549 – North Hollywood Station
- Staff contacted Tapia Bros Produce and Sepulveda Garden Center to find out if they would be affected by the proposed change. Both said they and their customers would not be affected by rerouting of the service.
- Distance from Magnolia Bl to Burbank Bl stop is nominal: 680 ft (0.13 miles)
- 14 daily trips on the line.
- Daily average eastbound load before Balboa Bl: 70 patrons on board
- Daily average westbound load before Hayvenhurst Av: 84 patrons on board
- On-board survey was conducted to obtain patrons' opinion about the proposed change, staff found:
  - 2 of 16 like the current route.
  - 13 of 16 were in favor of a reroute.
  - 1 of 16 were neutral about the routing.

# Discussion