

Bicycle Program Update



Metro's Bicycle Roundtable

Established February 2010

Meets in daytime

2 Subcommittees

- Policy & Planning
- Implementation & Operations
- Evening meetings as needed to discuss issues



Developed list of action items (see Themes on website)



Bicycle Transportation Strategic Plan Update – 13 months

RFP June 2011

- State of Bicycling in Los Angeles County
- Metro Policies
- Bikeway Transportation Corridor and Transit Network Connection Study
- Mobility Hubs: Bicycle Parking, Bicycle Share Locations
- Station Site Planning and Access Guidelines
- Technical Supplement: Update countywide inventory



Integrating Bikes with Transit

Expands the transit service area by 2 to 3 miles or more while contributing to a sustainable transportation system.

- ✓ Provides more choices for people and encourage multi-modal trips
- ✓ Adds convenience and saves household costs
- ✓ Reduces automobile trips (VMT)
- ✓ Provides connectivity to adjacent land uses
- ✓ Reduces energy use
- ✓ Reduces pollution
- ✓ Improves health
- ✓ Improves quality of life and simplicity



Findings in Metro Rail Survey/Counts

Metro conducted counts and surveys at 19 rail stations last year and found that bicyclists are a small but important subset of Metro riders.

- ▶ About 12% of the bicycle trips to and from the rail station replaced a motor vehicle trip
- ▶ 1.3% of all trips on rail (~3,273 daily trips) are made by individuals with bicycles
- ▶ 11% of respondents to the survey “rarely” have access to a motor vehicle and 36% never have access.
- ▶ Some people need a bicycle at the beginning and end of their trip.



September 2010 Board Directives

1. Increase funding in 2011 CFP
2. Triple bike racks on buses
3. Retrofit trains for bikes
4. Revise Code of Conduct
5. Bike racks on vanpool vehicles
6. Improve wayfinding signage
7. Incorporate bicycle messages
8. Improve security
9. Install stair channels in future transit stations
10. Incorporate robust bicycle facilities in all transit project designs - increase bicycle parking



Board Directive #1

Board increased funding in bike mode to \$15.5 million in Metro's Call for Projects

24 project applications

\$30 million funds requested

14 jurisdictions applying



Board Directive #2

Metro's Governmental Relations is confirming that triple racks are not too long for Metro buses or will be introducing bill in State legislature to authorize their use.



Board Directives #3, 4, and 6

Last week Board approved:

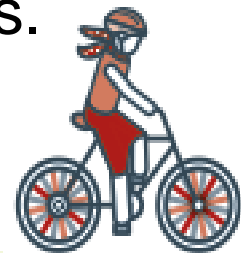
Lifting the peak hour restrictions for bikes on trains.

Designating space inside trains:

- Red/Purple lines have had 7 seats removed inside door providing space for all large items and wheelchairs.
- Gold/Green lines removal of seats inside door.
- Blue lines will be evaluated with counts and observations before removing seats.

Updating the Code of Conduct.

Improving signage inside trains and stations.



Benefits

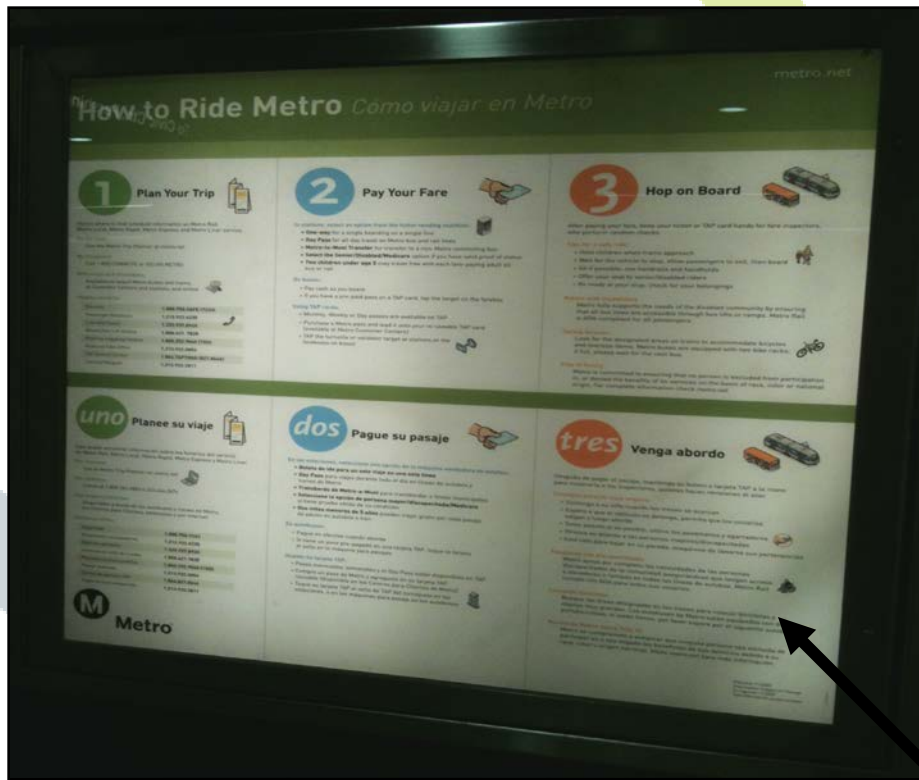
Our experience with seat removal on the Red Line is:

- Circulation was improved,
- Conflicts inside the trains were reduced,
- Bicycles did not block doors, and
- There were no complaints from passengers.



Board Directive #7

Integrating bicycle messages into Metro communications



Bike Map



“How to Ride Metro by Bike”



Board Directives #5 & 8

- Bike Racks on Vanpool vehicles – coordination with Metro Commute Services
- Increased bicycle parking security – coordination with Sheriff



Board Directive #9

Stair Channels for Bicycles



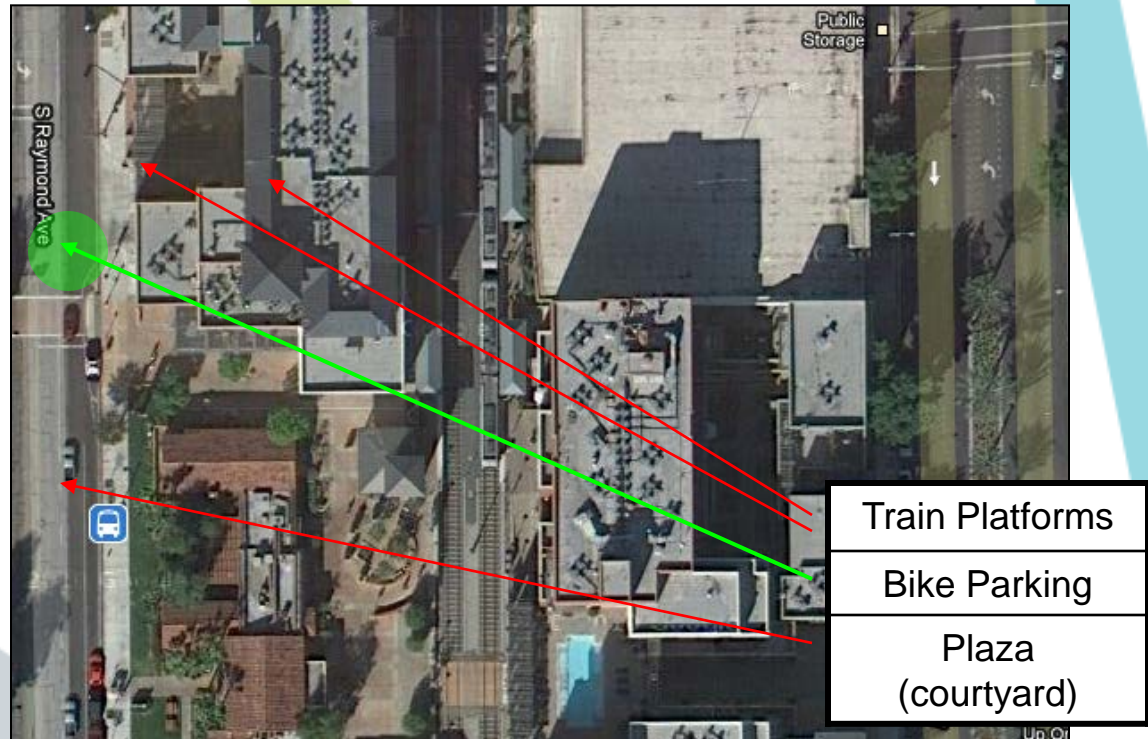
Studying the design & locations



Board Directive #10

Incorporate robust bicycle facilities in all transit project designs (e.g. increase bicycle parking at high demand stations)

Locate Bicycle Parking within Close Proximity to Platform



Bike Room within Transit Plaza



Store Front Bike Parking Facility



2011 Bicycle Parking Stations

Gateway Garage Enclosure

Hollywood-Vine Store Front

North Hollywood Modular Facility

El Monte Store Front



Hollywood-Vine



Other Program Activities

- Developed TOD bicycle parking requirements for Metro
- Plans to accommodate bike share docking stations on Metro property
- Developed Folding Bike Implementation Plan



Next Steps for Bicycle Program

Update bicycle strategic plan, add bicycle parking and simultaneous with lifting the restrictions, Metro will implement a robust and comprehensive marketing campaign that accomplishes the following:

1. Educate bicyclists regarding what they need to do in order to be accommodated in the most efficient and least disruptive manner.
2. Sign stations and rail cars identifying designated areas for bicyclists and those with other large packages/belongings.
3. Wayfinding at stations.
4. Enforcement with an initial education component.



Thank you for your attention!

