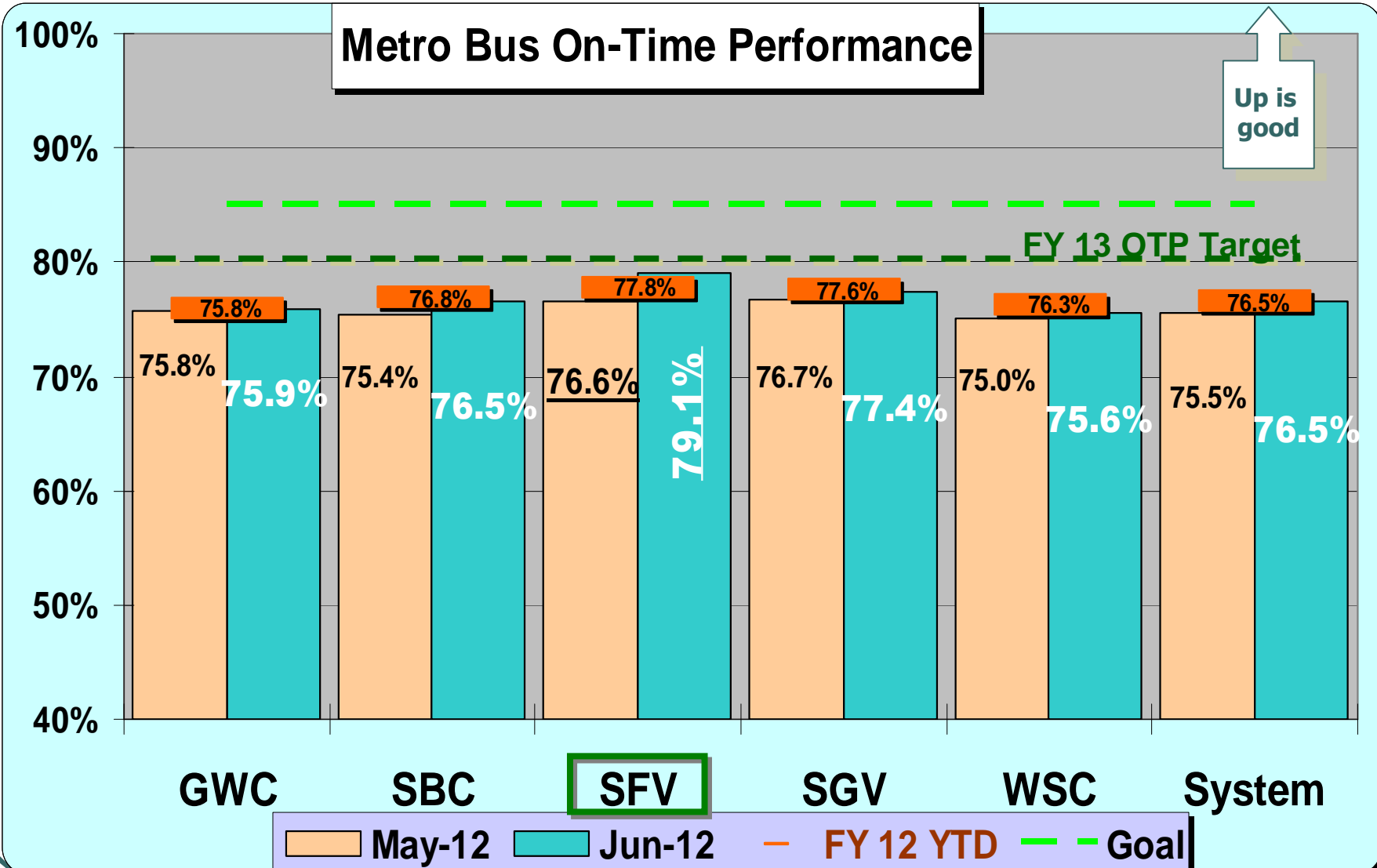


***Metro San Fernando Valley
Service Council
August 1, 2012 Meeting***

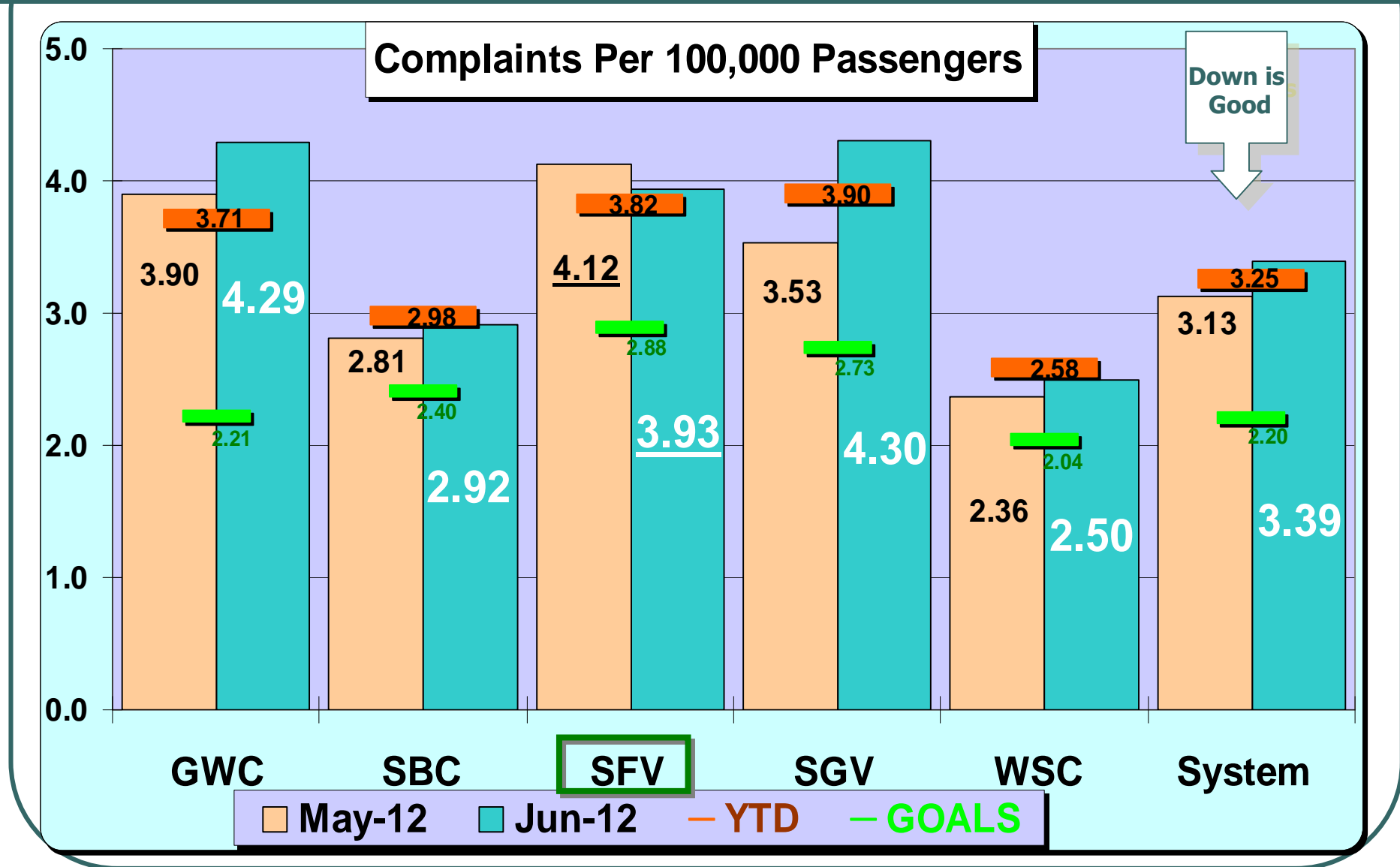
***Performance Report on
June 2012 Service***



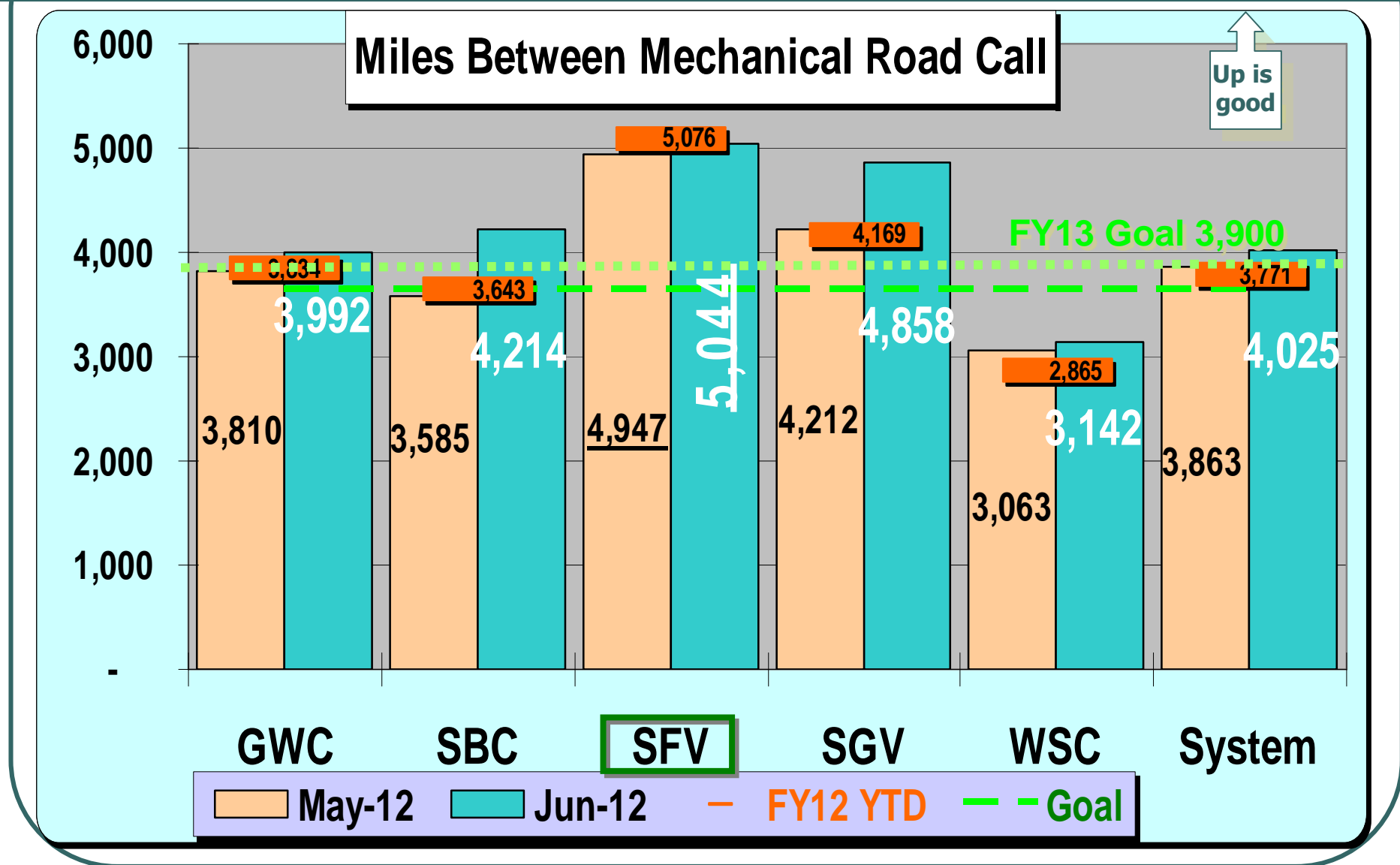
SFV Service Council August 2012 Meeting



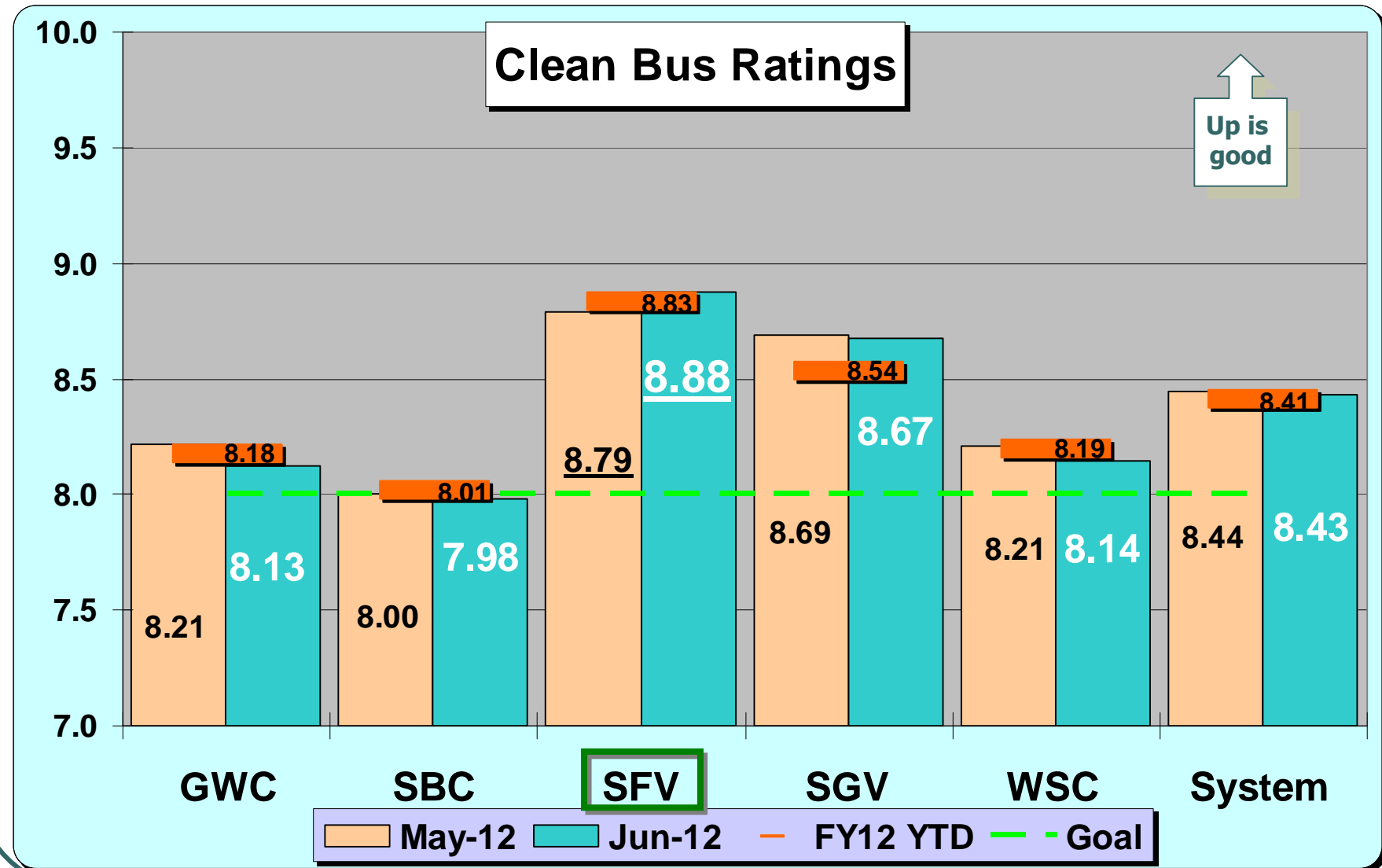
SFV Service Council August 2012 Meeting



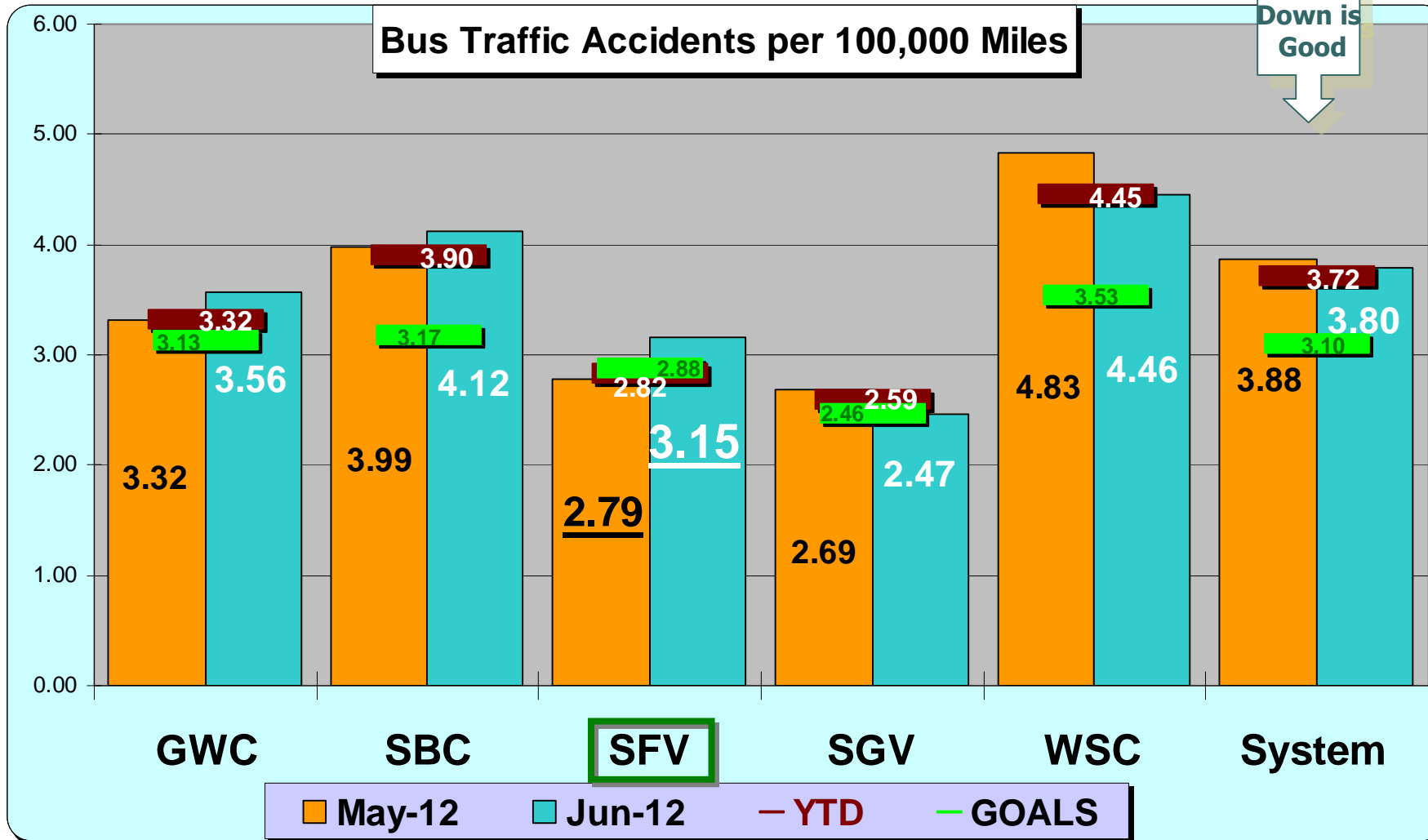
SFV Service Council August 2012 Meeting



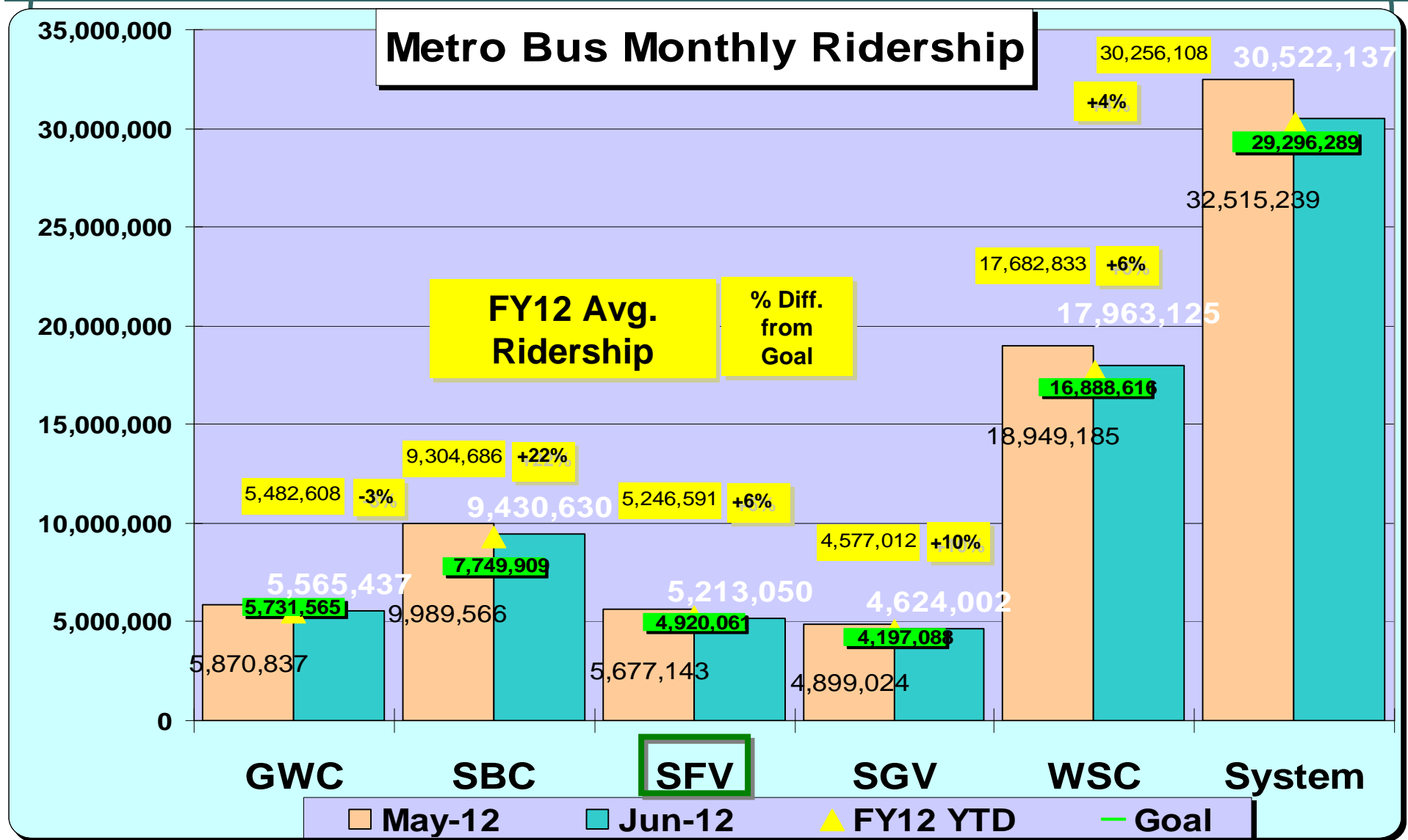
SFV Service Council August 2012 Meeting



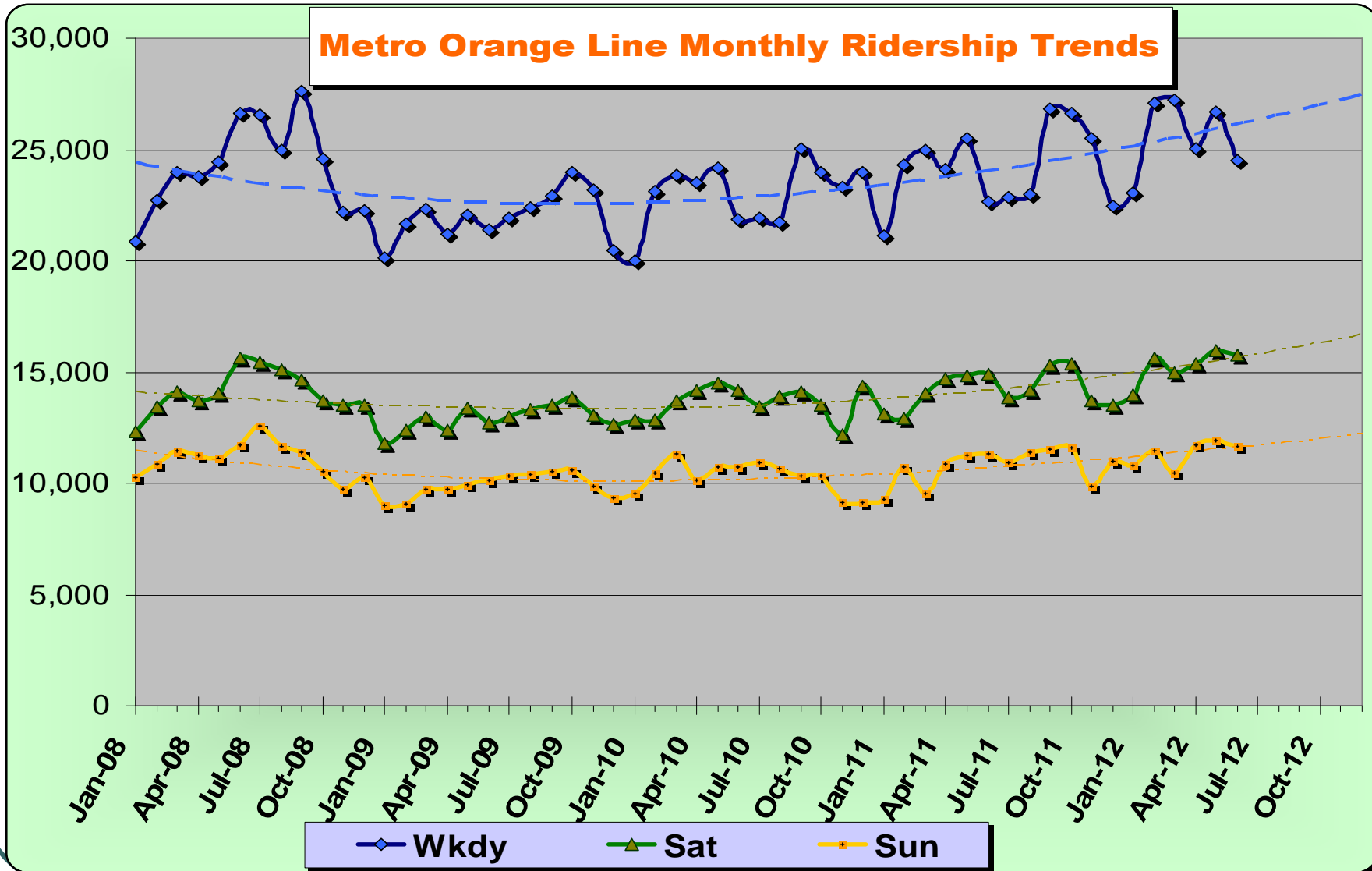
SFV Service Council August 2012 Meeting



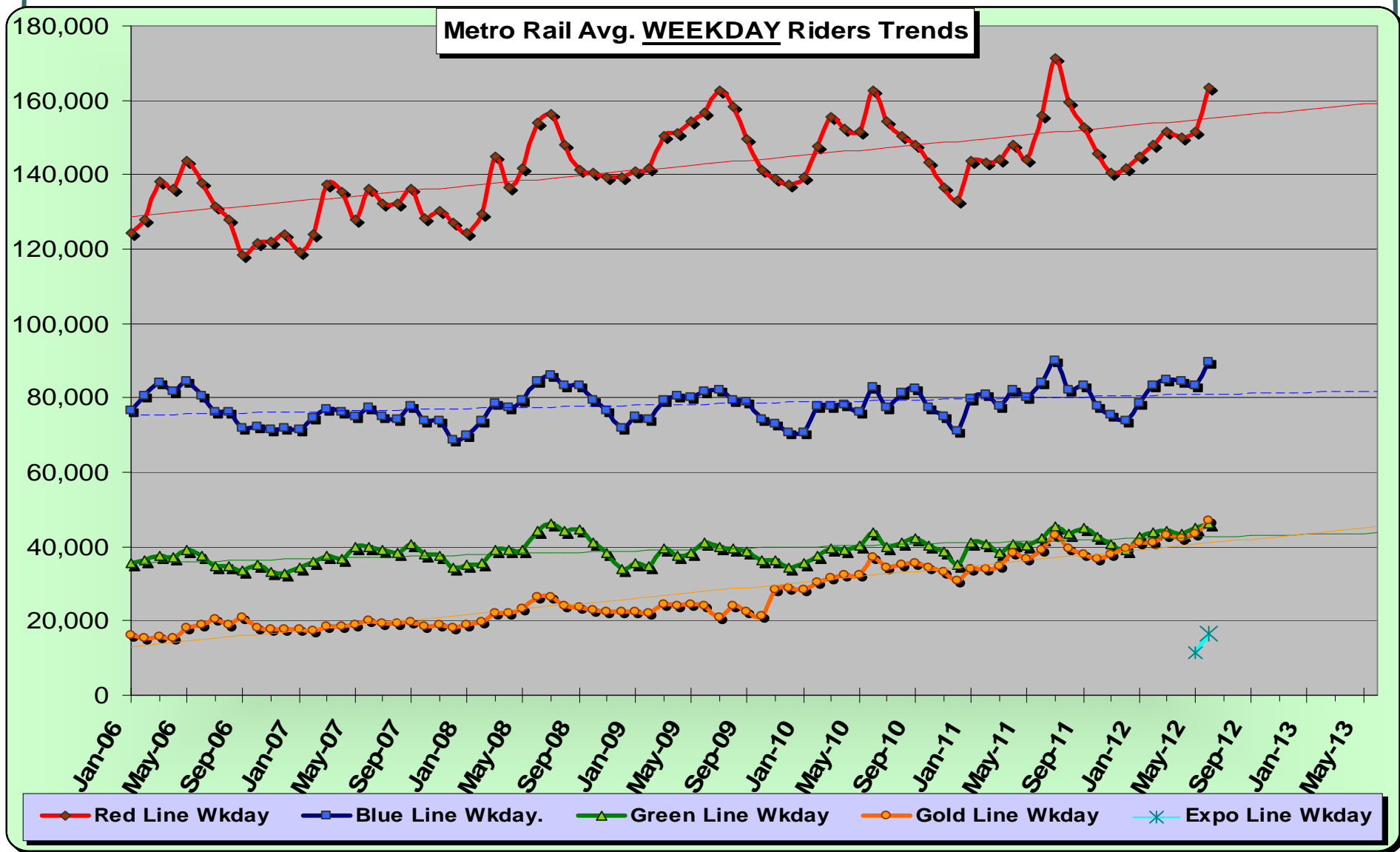
SFV Service Council August 2012 Meeting



SFV Service Council August 2012 Meeting



SFV Service Council August 2012 Meeting



SFV Service Council August 2012 Meeting

Bus Station Cleanliness Evaluation Scores

Bus Stations Evaluated	Dec. 2011	June/July 2012	Change	Agency	Grade
	Score	Score	Latest - Earliest		
Artesia Blue Line Bus Sta.	7.4	7.5	1.1	Metro	C
Aviation Green Line Bus Sta.	6.1	7.4	1.4	Metro	C
Burbank Metrolink Bus Sta.	8.5	8.5	0.5	Burbank	B
Culver City Sta.	7.6	7.1	-0.4	Culver City	C
Cal State LA Busway Sta.	7.6	7.6	0.0	Metro	C
Cal State LA Local Bus Sta.	8.3	8.6	0.3	LADOT	B
Del Amo Blue Line Bus Sta.	8.4	8.0	-0.4	Metro	B
El Monte Bus Sta.	7.5	7.5	-0.1	Metro	C
Harbor-Gateway Transit Ctr.	8.1	7.2	-0.9	Metro	C
Inglewood Bus Sta.	8.4	8.3	-0.1	Inglewood	B
LAX City Bus Sta.	5.3	7.8	2.5	Metro	C
Norwalk Green Line Bus Sta.	7.2	7.6	0.4	Metro	C
North Hollywood Red Line Bus Sta.	7.1	7.5	0.4	Metro	C
Patsaouras Bus Plaza	8.2	7.3	-0.9	Metro	C
Pico-Rimpau Bus Ctr.	7.7	8.2	0.5	Metro	B
Rosa Parks Bus Sta.	7.8	7.4	-0.4	Metro	C
South Bay Galleria Bus Ctr.	6.4	7.2	0.8	Redondo Beach	C
Sierra Madre Gold Line Bus Sta.	7.2	8.0	0.8	Metro	B
Universal Red Line Bus Sta.	6.5	8.2	1.7	Metro	B
Harbor-Century Fwy, Silver Line Sta.	8.2	7.7	-0.5	Metro	C
	7.46	7.73	0.27	AVG.	C

