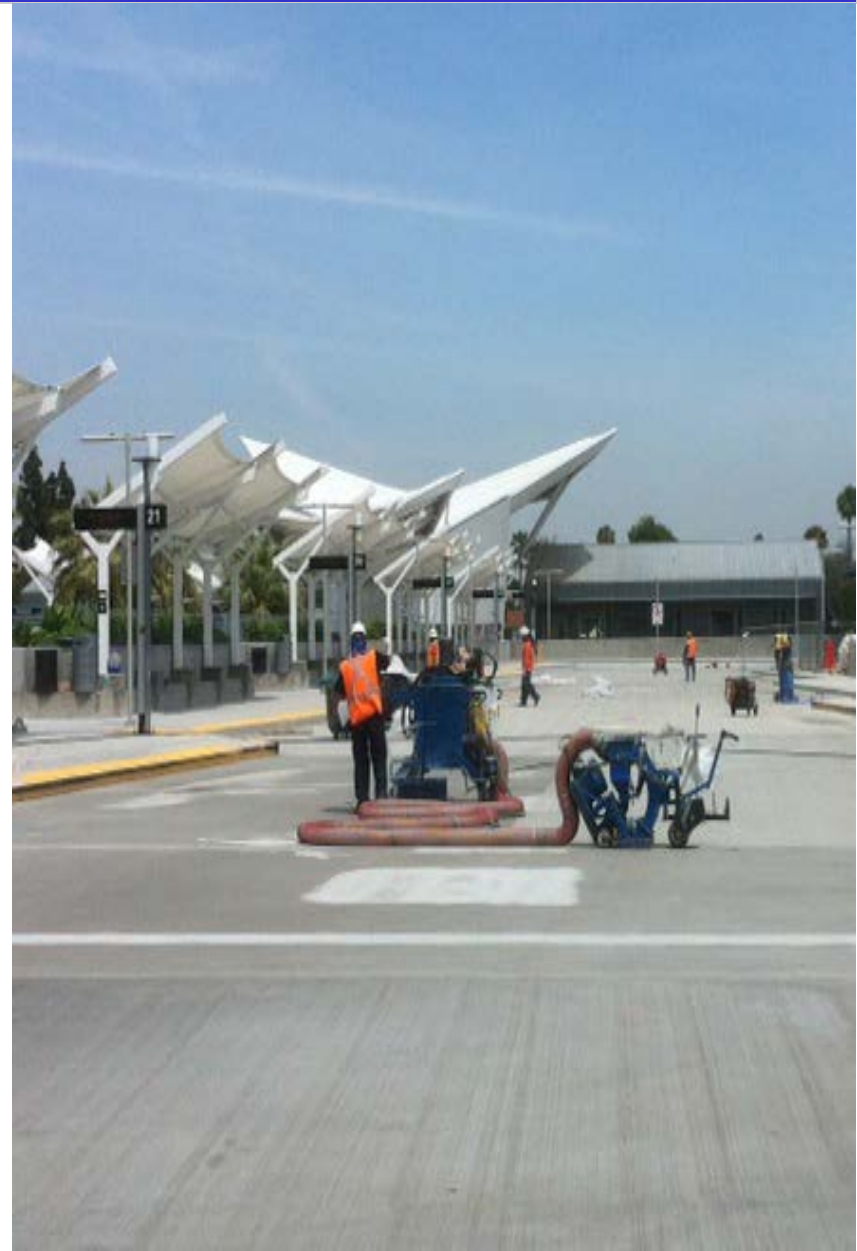


El Monte Station Waterproofing Project

San Gabriel Valley Service Council
June 8, 2015



El Monte Station Waterproofing Project

- 1st Phase of Project
- Partial shutdown of upper level
- Work started Monday, May 4, 2015
- Re-assignment of bays for all upper level lines



El Monte Station Waterproofing Project

- 2nd Phase of Project
- Continue partial shutdown of upper level
- Work started Monday, June 1, 2015
- Re-assignment of bays for all upper level lines



Metro

El Monte Station Waterproofing Project

- 3rd Phase of Project
- Continue partial shutdown of upper level
- Work projected to start Monday, June 22, 2015
- No re-assignment of bus bays
- Project projected to end mid-July



El Monte Station Waterproofing Project

Questions?

