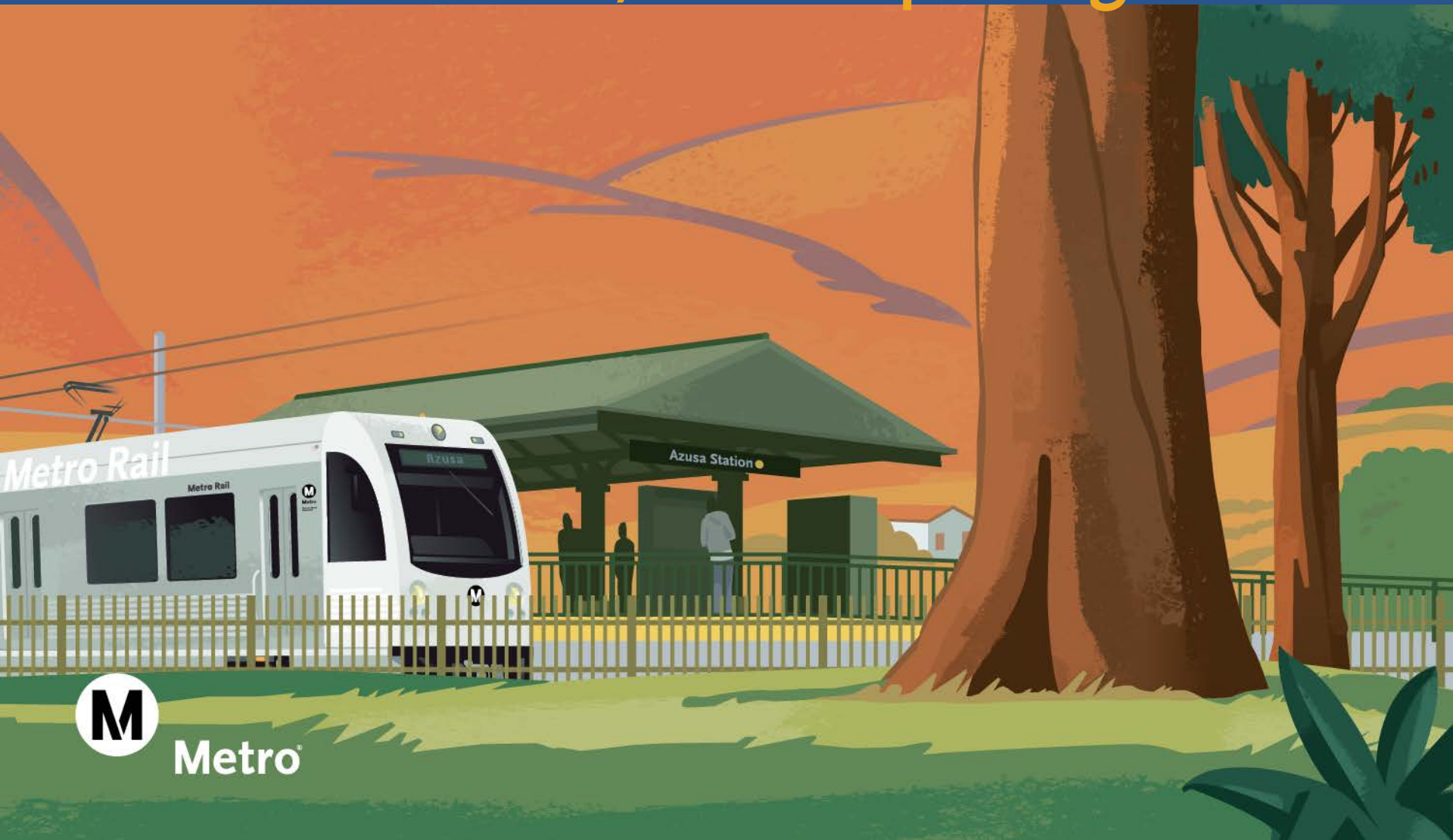


Metro Gold Line Foothill Extension

March 5, 2016 Opening



Metro

Transit Safety Program Activities To Date

- Conduct yearly Rail Safety assemblies
 - Schools
 - Senior Centers
 - Recreation Centers
 - Neighborhood Councils
 - Faith-based Centers
 - Community Centers
- Deploy Rail Safety Ambassadors
- Participate in community & school events
- Introduce Rail Orientation Tours



Pre-Revenue Service

Trains are operating on a regular schedule before opening to the public

Purpose:

- To familiarize the PUBLIC with train service
- To allow OUTSIDE AGENCIES to interface with the train before it opens
- To train METRO EMPLOYEES on the new extension

Typical testing Hours:

- 7 days a week, approximately 4:30a.m. to 2:30 a.m.



Valley to Valley Connection

the
501



NoHo to Pasadena
Introducing Metro Express service
Orange Line to Gold Line

New bus line begins March 1, 2016

Gold Line Foothill Factoids



6 new stations; 11.5 miles long

Trains will travel 55 MPH

Over 200 trains will pass daily

Parking facility at all stations

Operations and Maintenance
Facility in Monrovia

Opening March 5, 2016

March 5, 2016 – Preliminary Planning

9:30 AM – Opening Ceremony at Duarte/City of Hope Station

11:00 AM – Service Begins
Free rides between Sierra Madre Villa station and Azusa – APU/Citrus station

11:00 – 4:00 PM – City Celebrations being planned in Arcadia, Monrovia, Duarte, Irwindale and Azusa



March 5, 2016 – Marketing

metro.net/moregold

Rediscover Gold.

6 NEW STATIONS OPEN MARCH 5.



EXP 03 04 16



Post Service Commitment

- Conduct safety assemblies annually
 - Schools
 - Senior Centers
 - Recreation Centers
 - Neighborhood Councils
 - Faith-based Centers
- Conduct hands-on safety tours & field trips
- Continue participating in community events



Metro Gold Line Foothill Extension Transit Safety Programs

Questions?

