

Metro South Bay Cities Corridor Study Bus Lines

**Metro Lines 210 & 710
On-Time Performance**

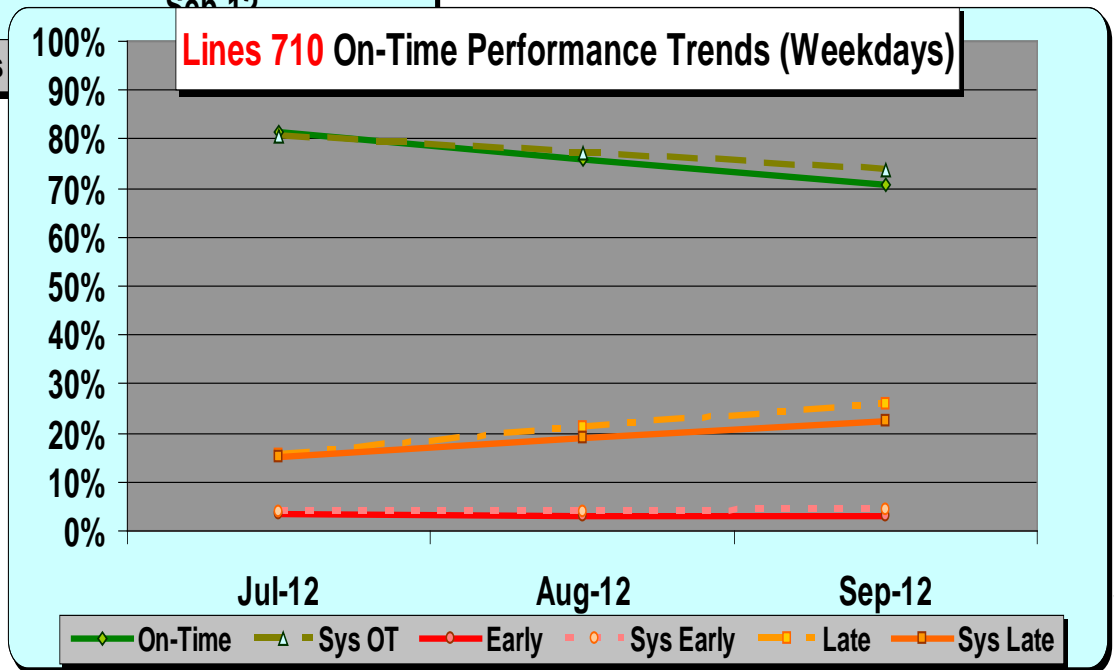
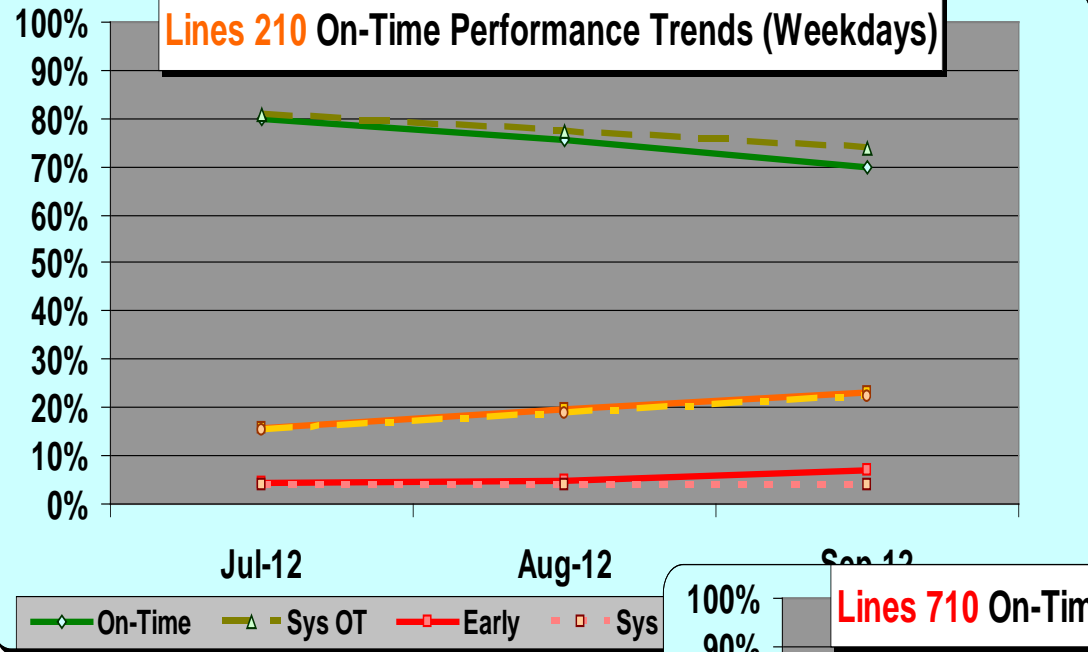
SBC Service Council November 2012 Meeting

Metro Bus Three Month On-Time Performance Trends

Bus Line		Weekdays			Saturdays			Sundays		
		Jul-12	Aug-12	Sep-12	Jul-12	Aug-12	Sep-12	Jul-12	Aug-12	Sep-12
210	On-Time	79.9%	75.3%	70.0%	77.7%	71.9%	65.2%	73.5%	72.4%	70.2%
710	On-Time	81.3%	75.7%	70.9%	87.1%	83.4%	79.0%			
Sys OT		80.8%	77.3%	73.7%	76.1%	73.9%	71.6%	77.8%	74.9%	75.2%
210	Early	4.2%	4.8%	6.8%	4.2%	3.0%	5.4%	4.1%	2.9%	5.6%
710	Early	3.4%	3.0%	3.1%	3.4%	2.9%	1.4%			
Sys Early		3.9%	4.0%	4.1%	3.5%	3.4%	3.6%	3.6%	3.5%	3.9%
210	Late	15.9%	19.8%	23.2%	18.1%	25.1%	29.4%	22.4%	24.7%	24.2%
710	Late	15.3%	21.3%	26.0%	9.5%	13.7%	19.6%			
Sys Late		15.3%	18.8%	22.2%	20.4%	22.7%	24.8%	18.6%	22.7%	21.0%

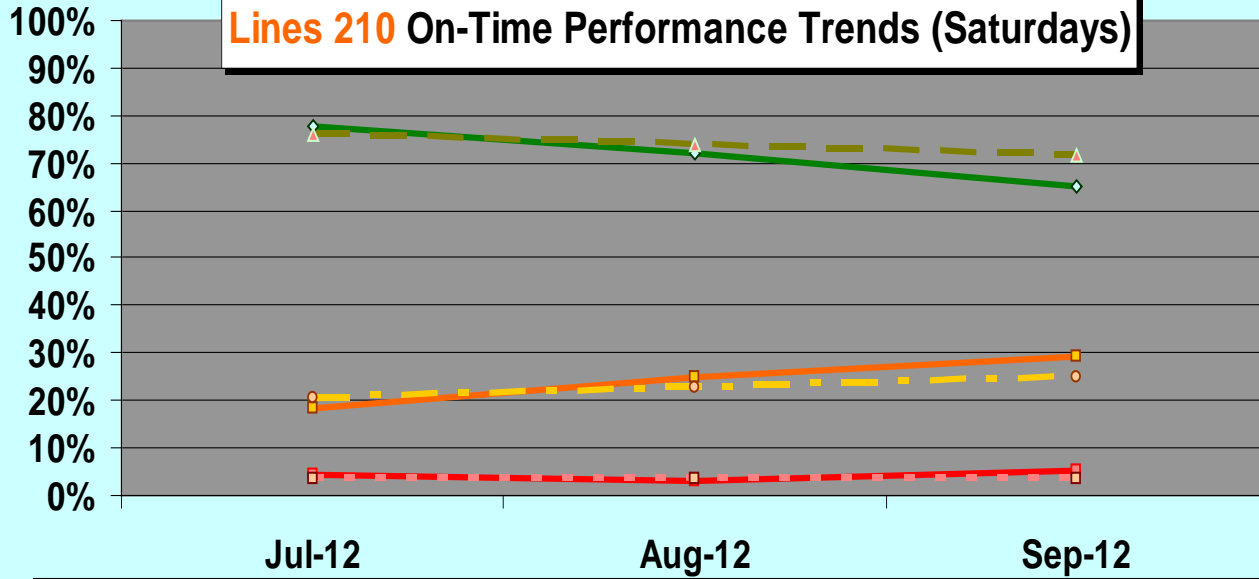


SBC Service Council November 2012 Meeting

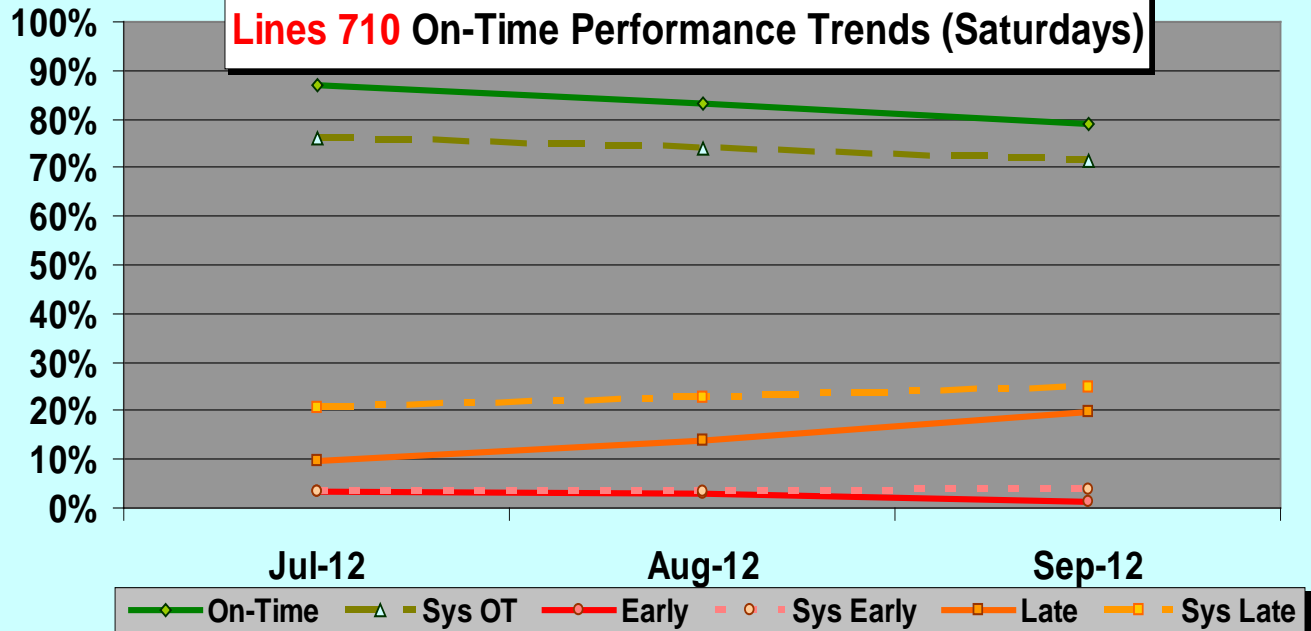


SBC Service Council November 2012 Meeting

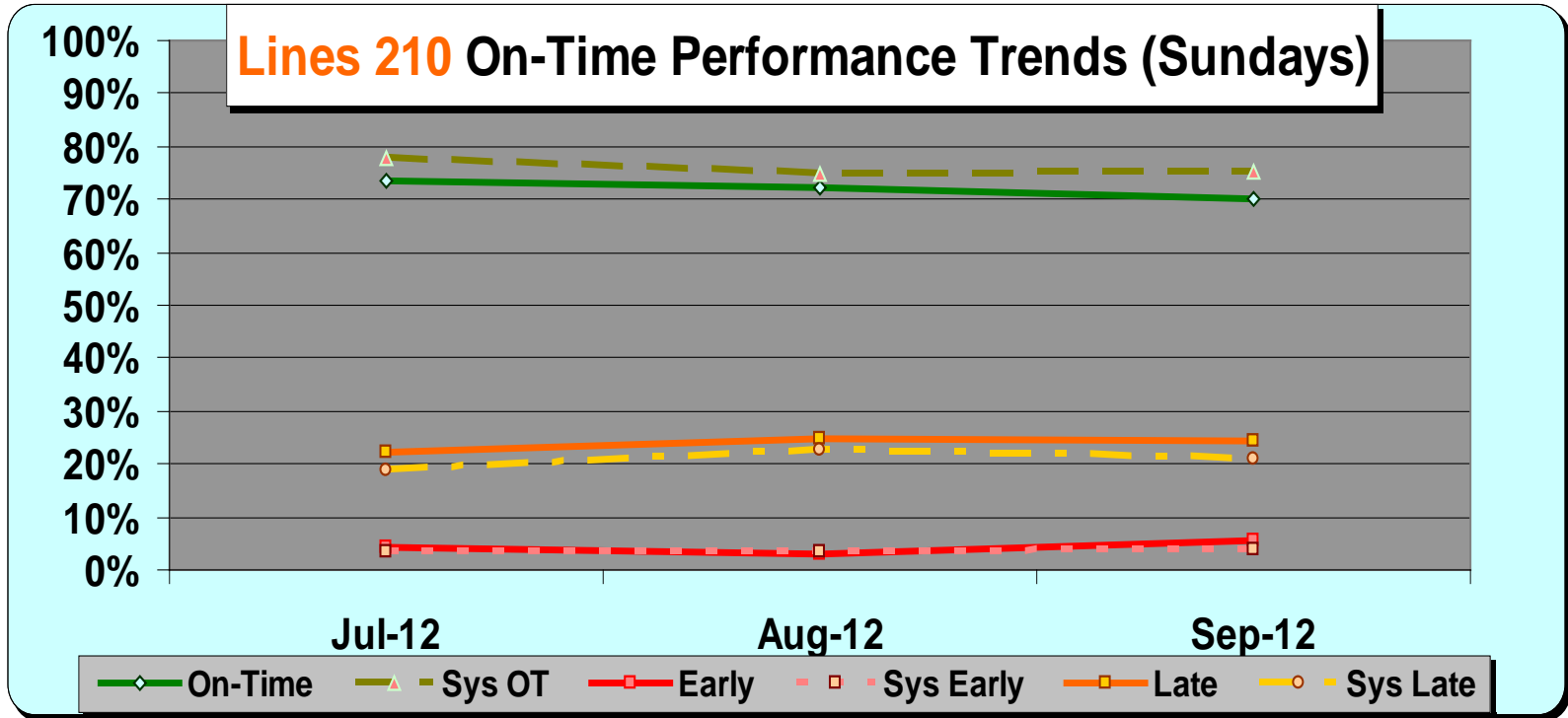
Lines 210 On-Time Performance Trends (Saturdays)



Lines 710 On-Time Performance Trends (Saturdays)



SBC Service Council November 2012 Meeting



DISCUSSION