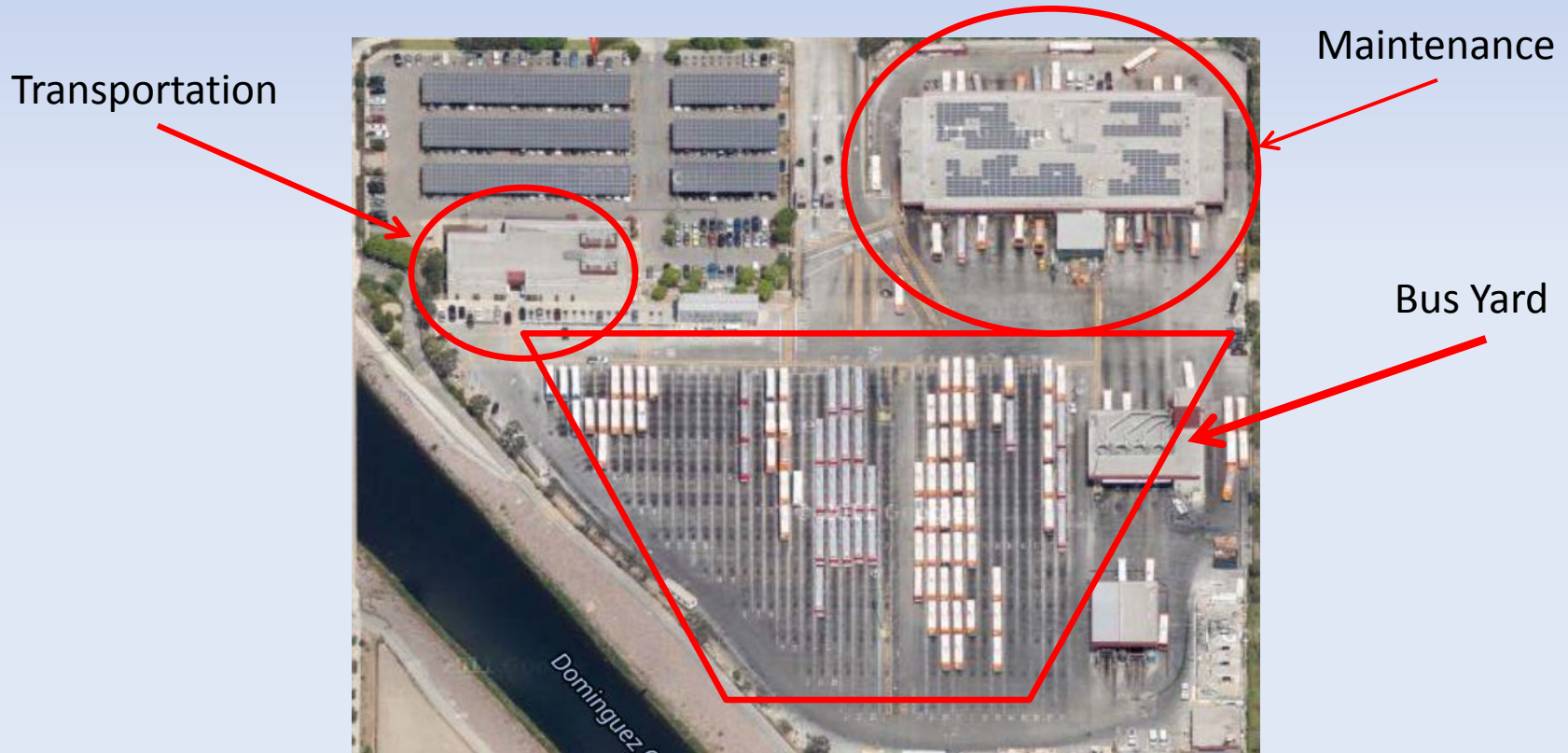


METRO - Division 18

450 Griffith Street, Gardena, CA 90248



Traffic Accident Reduction Programs

The “Division Accident Reduction Program” includes the efforts and participation of various departments within Metro. Vehicle Operations, Bus Operations Control and the Scheduling Department all contribute to the reduction of accidents.

Some but not all of our efforts include the following:

- Identification of Target lines
- Identification of ‘Hot Spots’ (Hazardous Locations)
- Vehicle Operations monitoring of Hot Spots
- Line Saturations
- Assistance from Scheduling
- Mandatory Pre and Post Accident Training

Division 3218 Accident Statistics for January 2014

The top four lines for accidents comprised
54.17%
of the total accidents for the month of January.

The 'Target Lines' for January
were lines 115, 117 and 210/710.

These lines had a combined total of
13 out of the 24 accidents in January.

Division 3218 Accident Statistics for January 2014

The top two accident types comprised
37.5%
of the total for the month of January.

The top two types of accidents for the month of January were

- Type 160 – other vehicle side swipes Metro vehicle and
- Type 240 – other vehicle rear ends Metro vehicle.

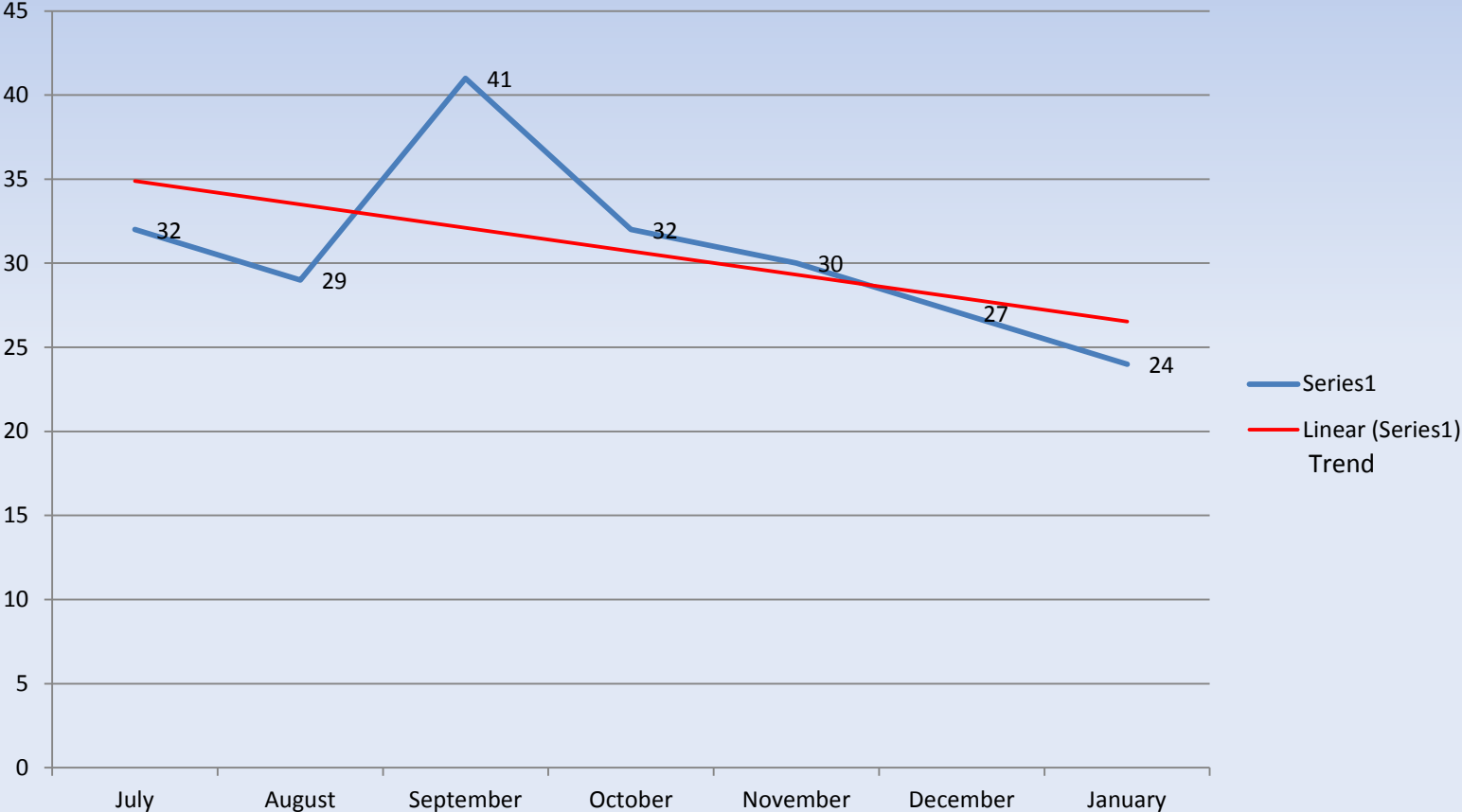
These two types of accidents had a combined total
of 9 out of the 24 accidents in January.

System Wide and Site Specific Training

In addition to the training that is available System wide, Division 3218 has developed a site-specific training class.

This “Accident Prevention Class” is given to all Operators coming to Division 3218 and as part of the annual training given to all the Operators already assigned to the Division.

Accident Trend for the Last Six Months



Site Specific Training

The site specific training includes classroom instruction, interactive participation, PowerPoint presentations and accident videos. Many of the accidents that we catalog and investigate are not the fault of our operators.



Avoidable accidents do however occur. When this happens, we vigorously investigate to determine culpability.



In these situations, appropriate actions are taken to prevent any reoccurrence.

Questions?