

I-405 Sepulveda Pass Widening Project

Westside / Central Governance Council Presentation

April 14, 2010



Project Improvements

- 10 Mile Northbound HOV Lane
- Southbound Lane Standardization
- 27 Ramp Improvements
- Widening of 13 Bridge Structures
- 3 New Bridge Structures

Project Improvements (Continued)

- 18 Miles of Retaining Wall and Sound Wall
- \$1.034 Billion
- Project Completion 2013
- Project Commencement August 31, 2009

Project Boundaries

Northern Boundary

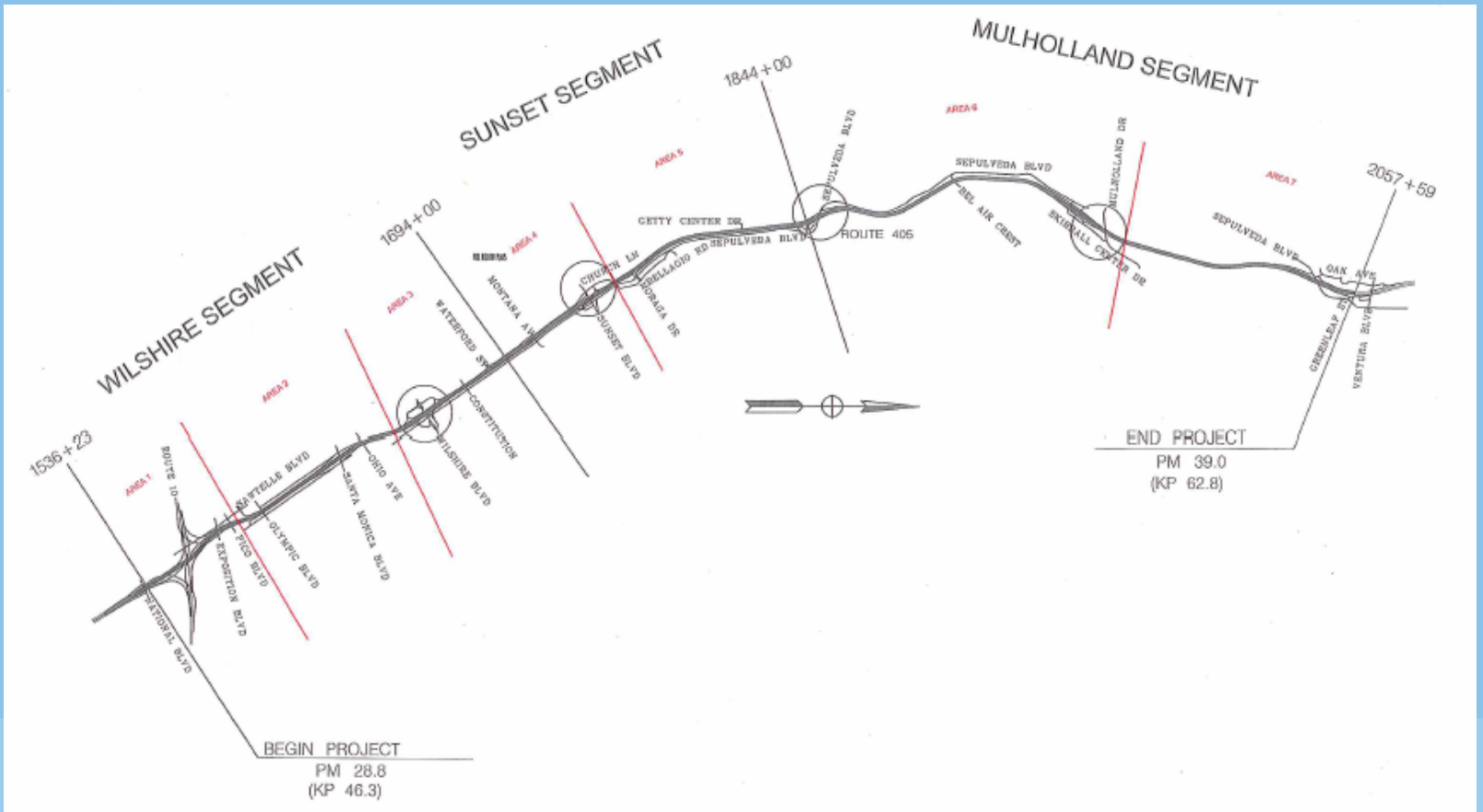
Greenleaf St. – South of the Ventura Freeway (U.S. 101)

Southern Boundary

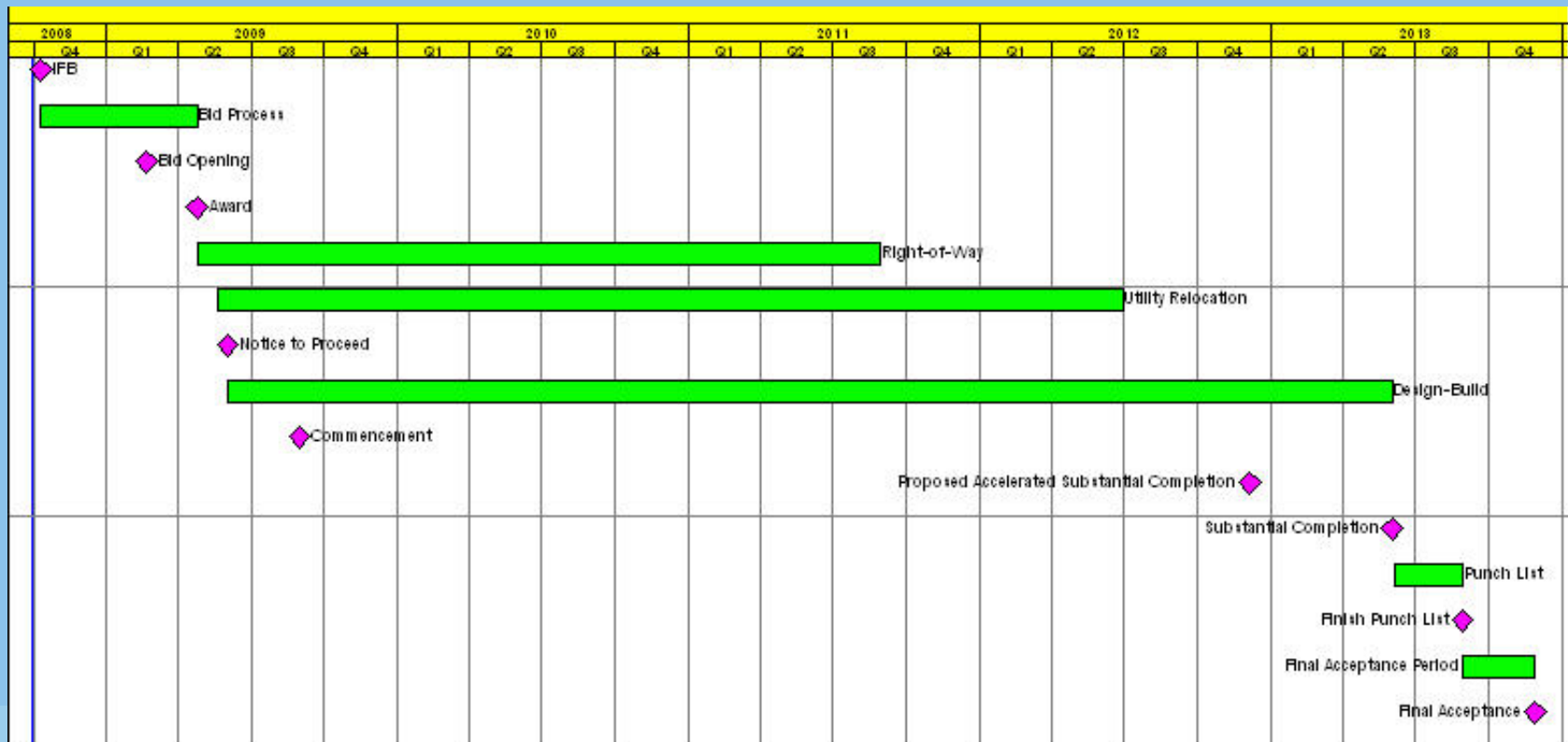
National Blvd., South of the Santa Monica-Rosa Parks Freeway (I-10)



Project Approach



Design/Build Project



Project Milestones

- Mulholland, Skirball and Sunset bridge replacement
- Sepulveda Blvd. improvements
- Ramp Improvements at Wilshire, Sunset and Skirball
- Construct Retaining Walls
- MWD 96" Water Line Realignment

Pre-Construction Activities

- Geotechnical Investigation
- Inspection and Cleaning of Storm Drains and Sewers
- Survey Work
- Mobilization
- Construction Yard and Trailer Set Up
- Conceptual Design
- Pre-Construction Surveys

Construction Schedule

Early Work

- Lane Modifications/Re-striping
 - NB 405 completed
 - SB 405 start April 2010
- Concrete Barrier Installation
 - Started in March 2010
- Utility Relocations (Sepulveda Blvd/Montana Ave.)
 - Started March 2010
- Improvements to Church Ln./Sepulveda Blvd.
 - Beginning late April/early May

Construction Schedule (Continued)

Main Line Work (April/May 2010)

- 17 Retaining Walls along Sepulveda Blvd.
 - Beginning May 2010
- Wilshire Blvd. Interchange
 - Beginning April 2010

Construction Schedule (Continued)

Main Work (April/May 2010 Continued)

- Sunset Overcrossing Replacement
 - Beginning May 2010
- Soil Nail Walls/Excavation along Sepulveda Pass
 - Beginning April 2010

Upcoming Activities

- Skirball Overcrossing Replacement
 - Beginning June 2010
- Mulholland Overcrossing Replacement
 - Beginning October 2010
- Getty Bridge Widening
 - Beginning March 2011
- Bel Air Crest Bridge Widening
 - Beginning June 2011

Bus Operations Coordination

- Hosted coordination meetings with Metro Bus Operations and LADOT Commuter Express
- Construction provides 3-week look ahead schedule providing Bus Operations an opportunity to create service updates
- Provides schedule of proposed closures

Bus Operations Coordination (Continued)

- A link has been added to metro.net/405 connecting the public to service updates in the event construction affects bus schedules.
- Press releases are issued when construction may cause service delays due to construction.

Bus Operations Coordination (Continued)

Briefings

- San Fernando Valley Governance Council
- South Bay Governance Council

Notification and Input Process

- Bus stops relocation
- Bus route alteration

Bus Operations

- Metro Bus Operations is developing detours to accommodate construction and minimize passenger disruption

Sunset Boulevard (Line 2/302)

- Construction along Sepulveda or Church near Sunset could impact service
- Buses will be diverted when necessary ensuring as minimal diversion as possible
- Buses will continue to use Montana Avenue between Sepulveda and Church Lane in both directions

Bus Operations (Continued)

Sepulveda/405 (Line 761)

- Will be impacted by bridge demolition at Skirball Center Drive
- Southbound buses will be rerouted to operate on Sepulveda
- Working with LADOT to secure new layover and bus zones to accommodate reroutes

Wilshire (20/720/920) & Santa Monica (4/704)

- Line adjustments will be developed and announced when needed



Metro



Construction Mitigation

- Construction Noise
 - Monitor noise levels during construction
 - Source reduction
 - Reduction at recipient
 - Limit night noise work
 - Complaint process

Construction Mitigation (Continued)

- Traffic Impacts
 - Outreach with CAC
 - Coordination with City and Caltrans
 - Avoid residential neighborhoods
 - Minimize construction vehicle impacts
- Lighting
 - Avoid residents
 - Limit night work

Community Relations

Construction Impact Mitigation Program

- Public outreach
- Stakeholder communication
- Construction impact mitigation
- On-going coordination with Caltrans on commuter notifications

Community Relations (Continued)

Resolving Issues

- Regular hours work with management team to address concerns
- After-hours work with field staff to address concerns
- On-call 24/7 for emergencies

The End

Metro Community Relations

Project Hotline: (213) 922-3665

l405@metro.net

www.metro.net/I-405

www.facebook.com/405project

Twitter: http://twitter.com/I_405

Nixle: nixle.com

