

Wilshire BRT Project

June 11, 2014



Project Goals

- Improve bus service reliability
- Improve traffic flow along Wilshire Boulevard
- Repave the curb lanes along damaged portions of Wilshire Boulevard
- Encourage shift from automobile use to public transit
- Improve air quality
- Minimize impacts to existing parking
- Improve passenger travel times by an average of 24%

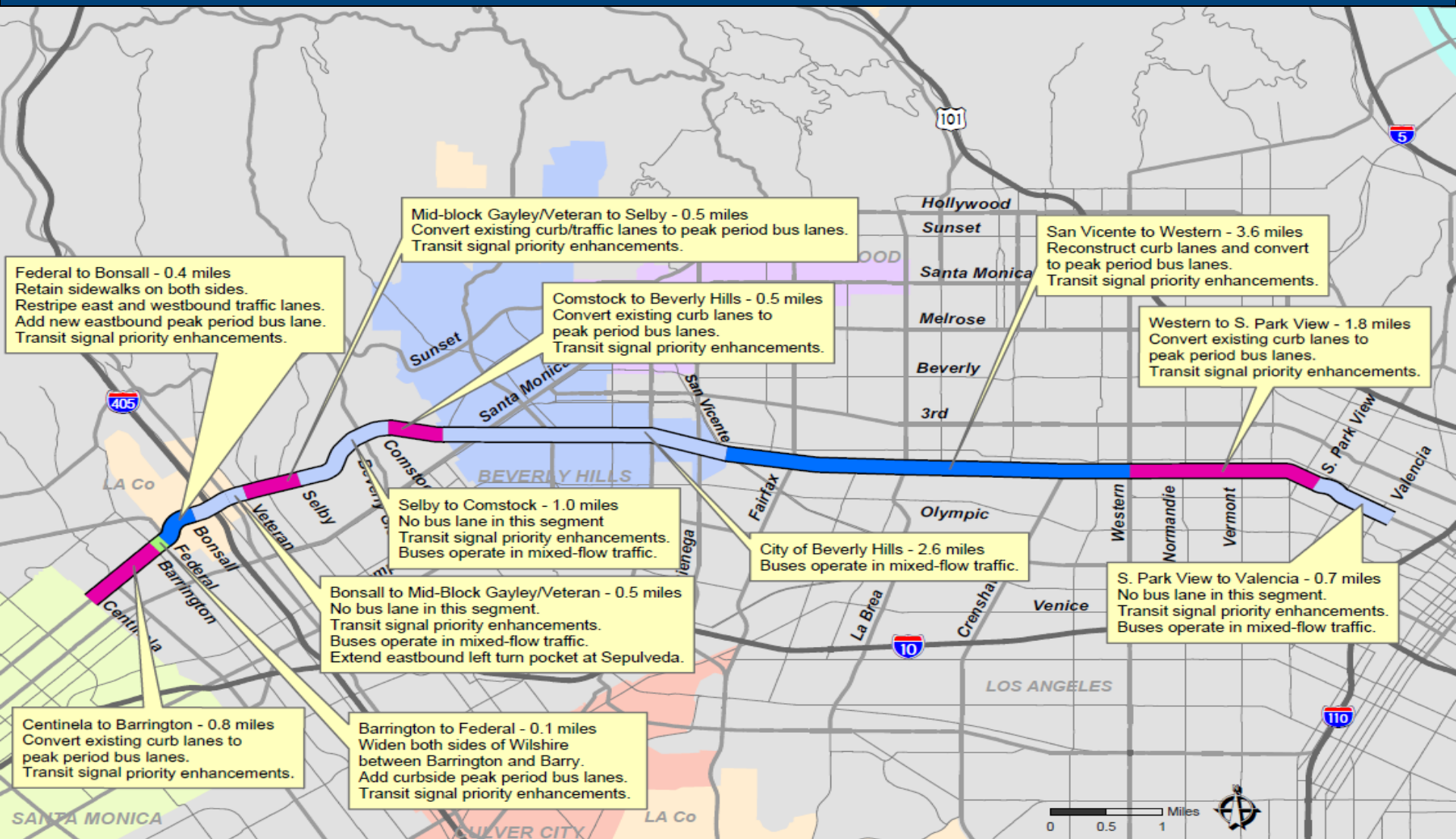
Project Overview

- Spans 12.5 miles along Wilshire from just west of downtown Los Angeles at Valencia Street to the Santa Monica City line at Centinela Avenue
- Improvements would occur on 9.9 miles and include:
 - 3.6 miles of curb lane reconstruction/resurfacing between Western & San Vicente
 - 7.7 miles of weekday peak period bus lanes (7:00am to 9:00am & 4:00pm to 7:00pm)
 - Widening of Wilshire between Bonsall and Barrington
 - Signal priority enhancements, signage, and restriping for bus lanes, as necessary
 - Replacement trees and/or landscaping
- Buses would operate in mixed-flow traffic where no bus lanes

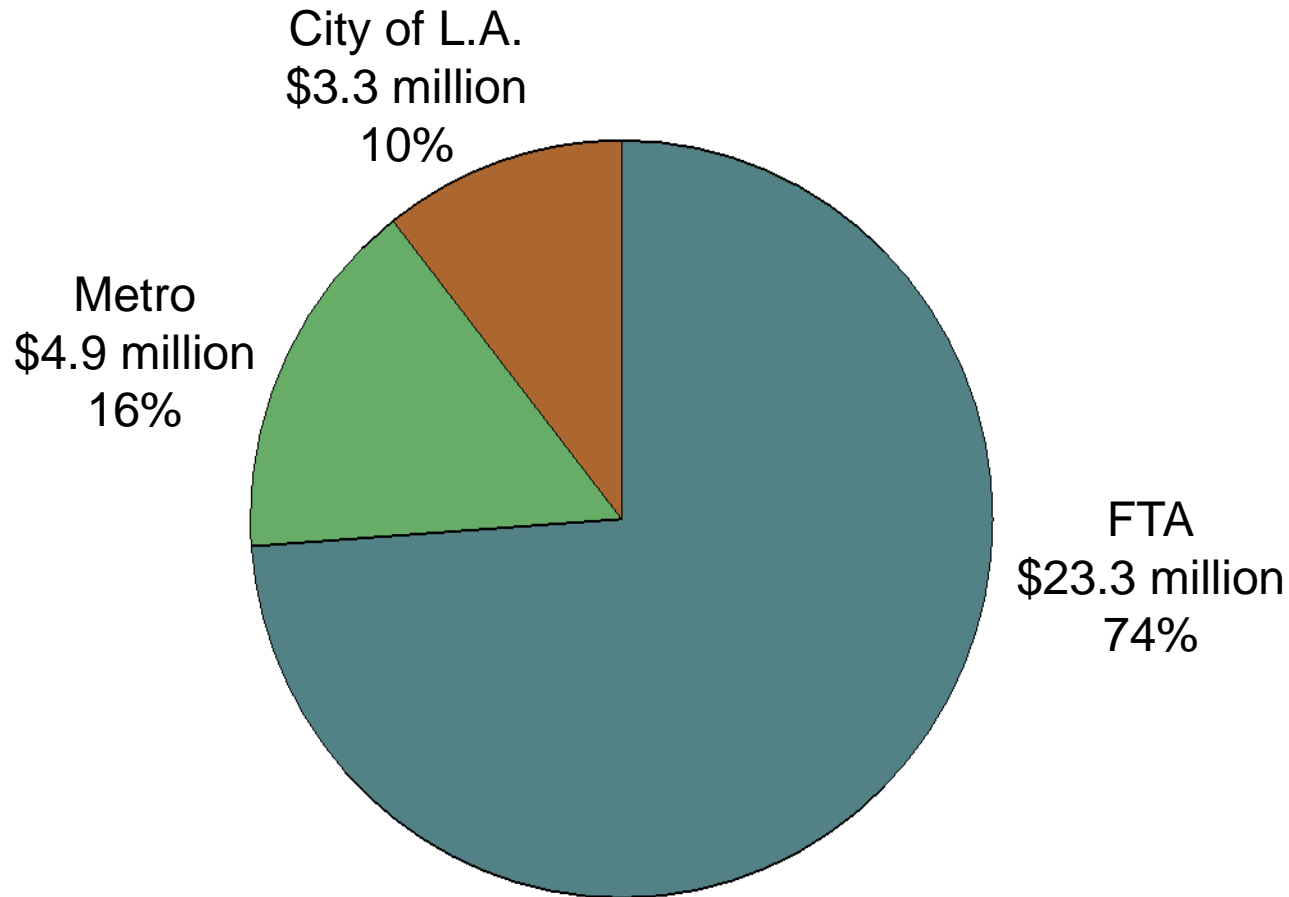


Metro

Wilshire BRT Project Map



Wilshire BRT Project Budget/Funding



TOTAL PROJECT = \$31.5 million

Wilshire BRT Project Update

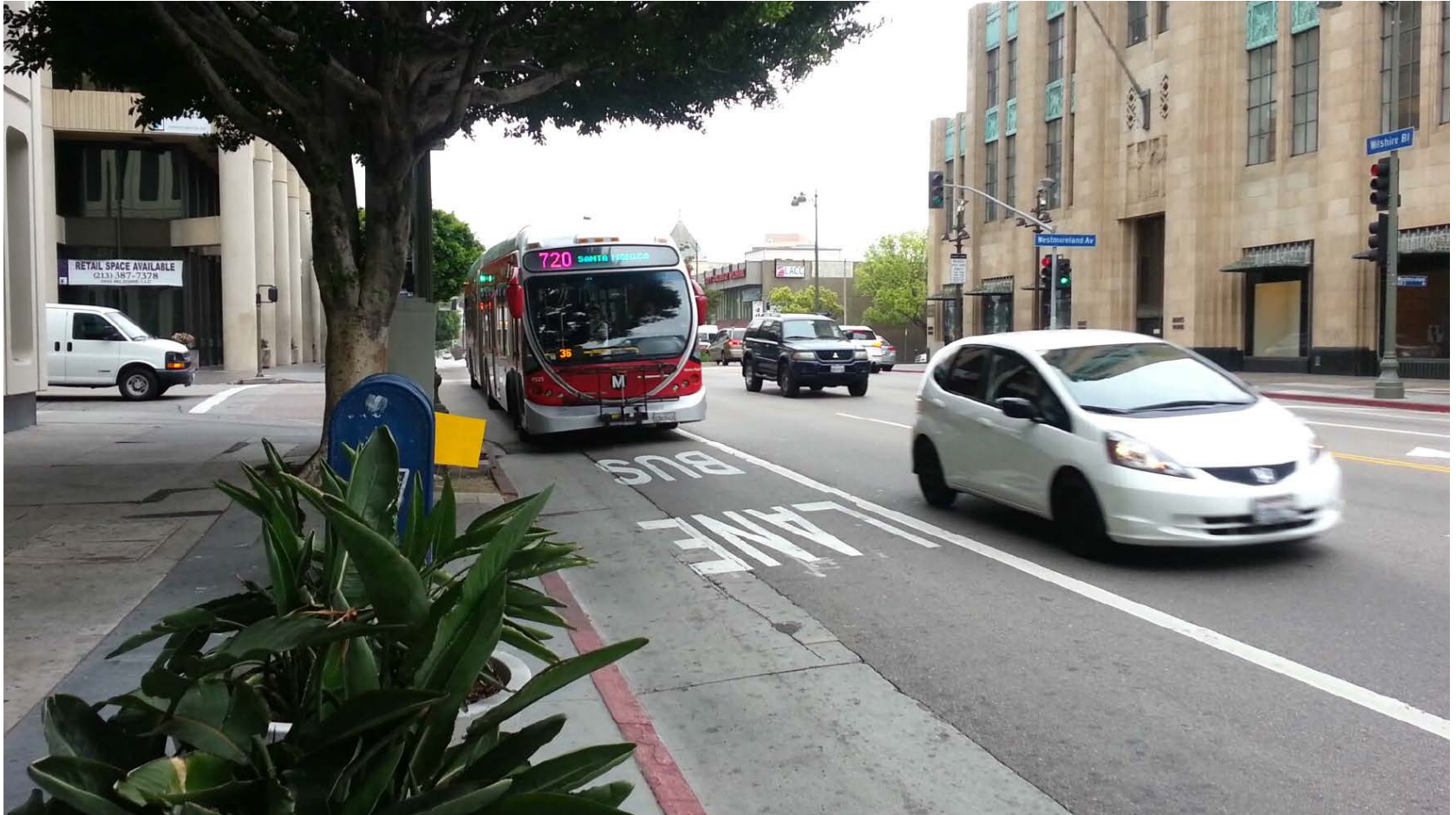
- Construction between Western and San Vicente currently underway
- Construction between Bonsall and Federal/San Vicente to begin mid-July 2014
- Project delayed from original completion date of late 2014 to August 2015
- Will open in segments prior to August 2015 so that some bus speed improvements can be realized sooner



Project Completion Schedule

Segments	Miles	Segment Work	Completion Date
Western to S. Park View	1.8	Segment completed	Opened for service June 2013
Corridor-Wide Transit Priority System (TPS)	N/A	Communications/TPS Enhancements will be implemented along entire corridor (excluding Beverly Hills)	Late 2014
Federal to Bonsall	0.4	Widen/repave/restripe	February 2015
Veteran to City of Beverly Hills	1.0	Restriping/signage	February 2015
Centinela to Barrington	0.8	Restriping/signage	August 2015
Barrington to Federal	0.1	Widen/repave/restripe	August 2015
San Vicente to Western	3.6	Reconstruct/resurface/restripe	August 2015

S. Park View to Western Segment



Wilshire BRT Project

QUESTIONS?