

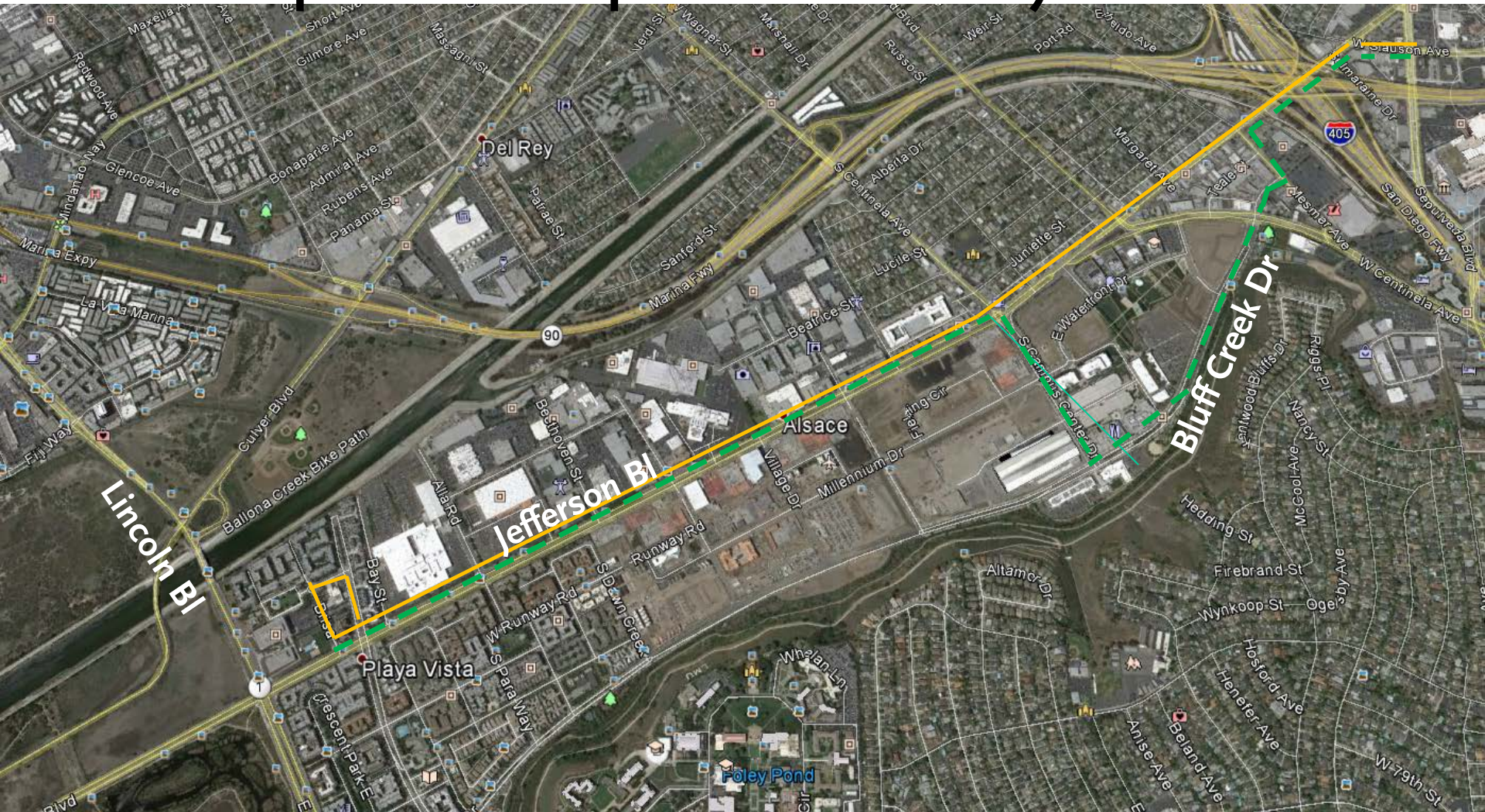
Update
Culver CityBus Line 4
Extension to Playa Vista
and Metro Line 110

Westside/Central Service Council
September 9, 2015



Metro

Playa Vista: Line 110 Route Segment on Jefferson Bl Compared to Proposed Culver CityBus Line 4



Metro

Metro Line 110 route segment
Culver City Line 4 extension



Culver CityBus Span of Service Proposal

Metro Line 110

- Eastbound span on weekdays 5 AM to 10 PM
- Saturday 6:20 AM to 10 PM
- No Sunday / Holiday service west of Culver City Transit Center on Line 110

Culver CityBus Line 4

- Proposed service from Eastbound from 6 AM to 10PM
- Proposed hourly Saturday service on Culver CityBus Line 4 shuttle from E.A. Way to Culver City TC
- No Sunday / Holiday service

Passenger Survey Conducted

Approximately 30 passengers were surveyed and or observed

- August 19, PM Peak; 19 patrons E.A. Way surveyed, 15 were proceeding east of CCTC
- August 21, AM Peak; 17 patrons observed continuing west of CCTC that otherwise would have to transfer

Other noteworthy trip generators in Playa Vista between CCTC and E.A. Way

- Animo Westside Charter Middle Sch. at 5456 McConnell Av
- Westside Neighborhood School at 5401 Beethoven St
- Home Depot on Alla Rd at Jefferson Bl
- Playa Vista Phase 2 soon to open with 2,600 new homes, retail, and commercial space. There should be more than enough riders to support two bus lines in the area.
- Duplicated segment on Jefferson Bl is only about 1.9 miles while the average trip length on Line 110 is 3.9 miles.
- CCB Line 4 will connect Expo Rail patrons to Playa Vista; Line 110 connects Blue Line patrons to Playa Vista, so each line has different rail markets.

Metro Staff Proposal

- Continue operating Metro Line 110 with service frequencies west of CCTC to E.A. Way that matches demand and reduces duplication.
- Monitor service once started and adjust if necessary.

Line 110 Passenger Impacts

(April 2015 Average Weekday)

Weekday Eastbound

(E.A. Way to Culver City Transit Center)

Stop Name	Boardings	Alightings
E.A. Way / Jefferson	164	
Jefferson / Alla	50	1
Jefferson / Beethoven	13	1
Jefferson / Mcconnell	35	1
Jefferson / Westlawn	15	2
Jefferson / Centinela	33	3
Jefferson / Centinela	17	1
Jefferson / Mesmer	12	3
Jefferson / Slauson	4	2
Slauson / Sepulveda	48	17
Culver City Transit Center		64
Total Px Impact EB:	391	95

Weekday Westbound

(Culver City Transit Center to E.A. Way)

Stop Name	Boardings	Alightings
Culver City Transit Center	86	
Slauson / Sepulveda	19	9
Jefferson / Slauson	2	3
Jefferson / Mesmer	3	15
Jefferson / Margaret	1	5
Jefferson / Inglewood	3	19
Jefferson / Centinela	4	43
Jefferson / Westlawn	5	26
Jefferson / Mcconnell	1	30
Jefferson / Beethoven	1	21
Jefferson / Alla	1	46
E.A. Way / Jefferson		186
Total Px Impact WB:	126	403

Line 110 Passenger Impacts

(April 2015 Average Saturday)

Saturday Eastbound

(E.A. Way to Culver City Transit Center)

Stop Name	Boardings	Alightings
E.A. Way / Jefferson	65	
Jefferson / Alla	23	2
Jefferson / Beethoven	13	3
Jefferson / McConnell	7	0
Jefferson / Westlawn	5	0
Jefferson / Centinela	9	1
Jefferson / Centinela	9	1
Jefferson / Mesmer	6	1
Jefferson / Slauson	1	1
Slauson / Sepulveda	20	5
Culver City Transit Center		28
Total Px Impact EB:	158	42

Saturday Westbound

(Culver City Transit Center to E.A. Way)

Stop Name	Boardings	Alightings
Culver City Transit Center	43	
Slauson / Sepulveda	5	2
Jefferson / Slauson	1	1
Jefferson / Mesmer	2	5
Jefferson / Margaret	2	2
Jefferson / Inglewood	0	12
Jefferson / Centinela	2	14
Jefferson / Westlawn	1	4
Jefferson / McConnell	1	11
Jefferson / Beethoven	0	14
Jefferson / Alla	11	31
E.A. Way / Jefferson		76
Total Px Impact WB:	68	172