

# **LOS ANGELES MOBILITY ELEMENT UPDATE**

**Metro Central Area Service Council**

**January 11, 2012**

# MOBILITY ELEMENT

- Last update in 1999
- End Results
  - Policy document with Goals, Objectives, Policies and Programs developed with public input
  - Layered-Network of Modal Priorities
  - New Street Standards and Streetscape Manual
  - Revised Street Benchmarking Tools
  - Implementation Strategy



# PHASE 1: IDEA GENERATION AND ANALYSIS OF EXISTING CONDITIONS

- Ideas.la2b.org virtual town hall
- Idea line
- Public Workshops





**LA/2B** The road ahead.

Welcome to the kick-off of the **Mobility Element!** We're just getting started and now is the time to share with us your practical, creative and insightful ideas that will keep Los Angeles moving in the 21st Century.

RECENT COMMENTS

- » This idea needs to be more precise. I like "Idea P's" specific route idea. I don't know the
- » Bring back the 920!
- » Sidewalks in LA tend to be



Select Language

Powered by **Google** Translate

PROJECT DETAILS

- » About The Project
- » Who's Listening?
- » LA/2B Project Website
- » City of Los Angeles

TOPICS

Closing Streets for Events



# Getting Around Los Angeles

NOV 07 - JAN 30, 2012 **IDEA SUBMISSION**

**65**

IDEAS



**JOIN NOW**

Like 1 Tweet 11 Share 0 +1 0 email

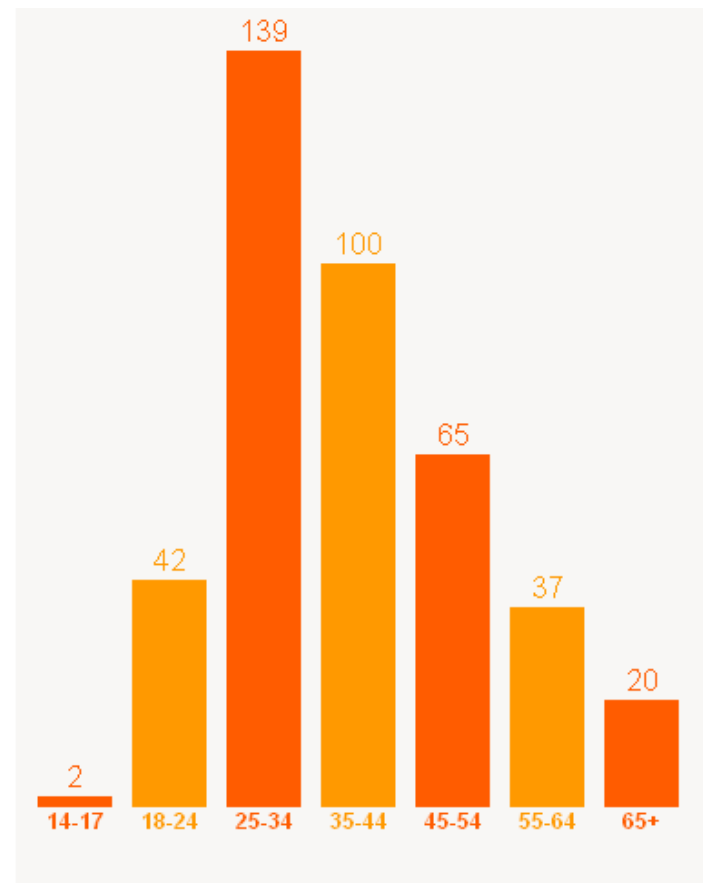


VIDEO PHOTO #1 PHOTO #2 **PHOTO #3**

**How do you primarily get around today? How would you prefer to travel around in the future?**

# IDEAS.LA2B.ORG STATS

## Age Breakdown



## Idea Count

217

## Comments

606

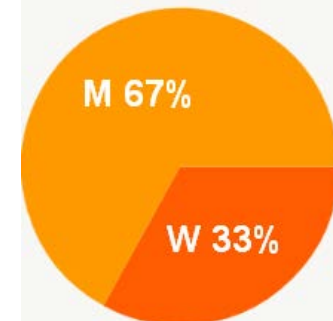
## Participants

405

## Number Of Days

62

## Self-reported Gender



# Most Active Zip Codes

Silver Lake

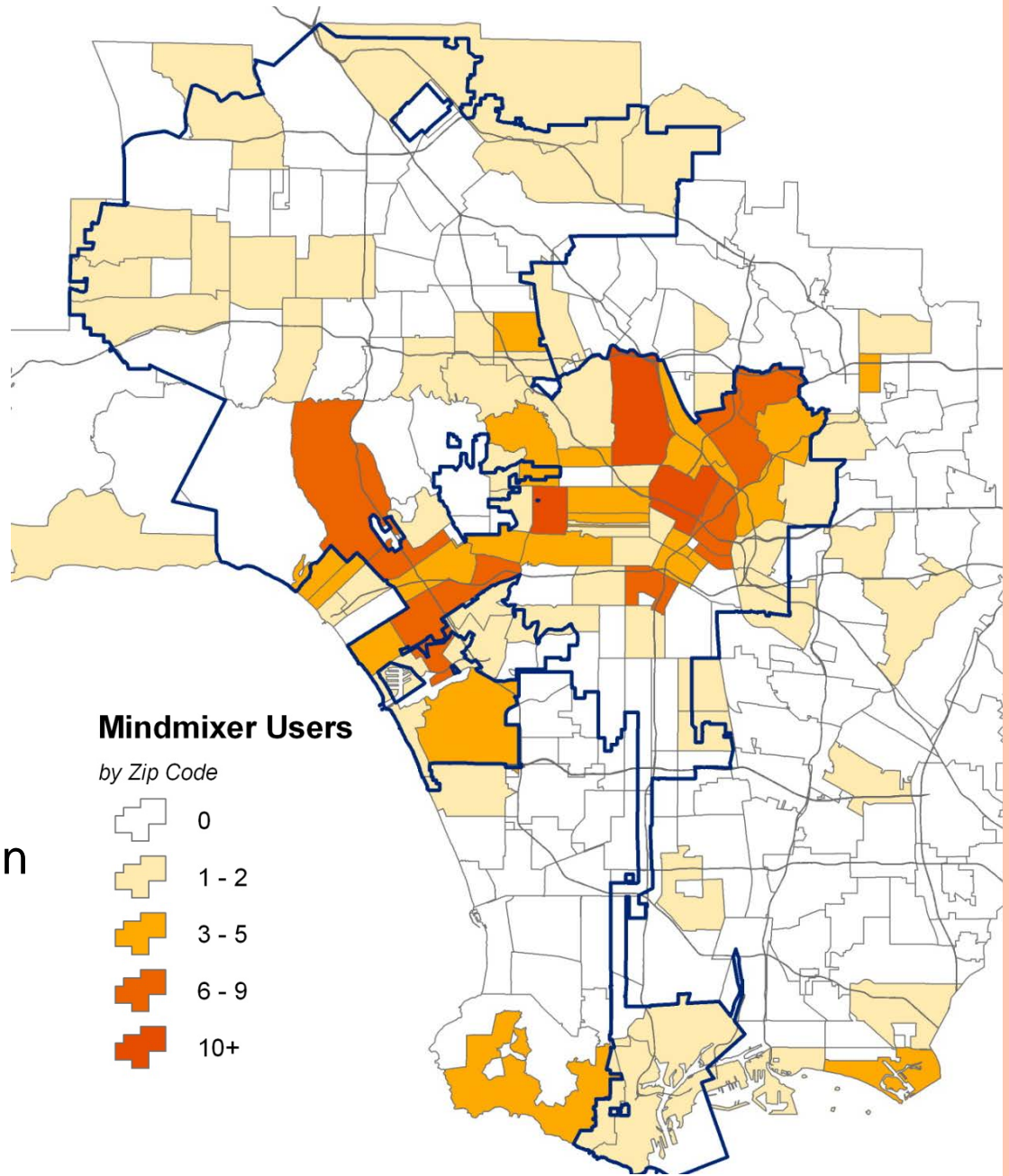
Chinatown/Elysian Park

East Hollywood/Los Feliz

Mid Wilshire

Cheviot Hills/Palms

Glassel Park/Mt Washington



# IDEAS.LA2B.ORG QUESTIONS

## NOVEMBER 2011-JANUARY 2012

1. How do you primarily get around today? How would you prefer to travel around in the future?

2. What changes will make streets work better?

3. What recent innovations would improve your commute?

4. What is your favorite Los Angeles street?

5. What would you like the streets of LA to be used for?

6. What street is most representative of Los Angeles?







# TOP IDEA GENERATORS:

1. How do you primarily get around today? How would you prefer to travel around in the future?	2. What changes will make streets work better?	3. What recent innovations would improve your commute?
<p>Prioritize people over autos</p> <p>Number of seconds: 47</p>	<p>Eliminate parking requirements</p> <p>Number of seconds: 19</p>	<p>Making drivers pay for the true cost of driving</p> <p>Number of seconds: 25</p>
<p>Bus-only lanes</p> <p>Number of seconds: 27</p>	<p>Bike corral</p> <p>Number of seconds: 16</p>	<p>Bicycle hubs with showers, lockers, and parking</p> <p>Number of seconds: 16</p>
<p>Bike lanes on major streets</p> <p>Number of seconds: 22</p>	<p>More trees and other traffic calming measures</p> <p>Number of seconds: 14</p>	<p>Queue jumps for buses at signalized intersections</p> <p>Number of seconds: 12</p>

# TOP IDEA GENERATORS, CONTINUED:

4. What is your favorite Los Angeles street?	5. What would you like the streets of LA to be used for?	6. What street is most representative of Los Angeles?	7. How often should streets be closed for events?
<p>Any street that is closed to vehicular traffic</p> <p>Number of seconds: 13</p>	<p>More pedestrian and cycling events</p> <p>Number of seconds: 28</p>	<p>Sunset Blvd.</p> <p>Number of seconds: 6</p>	<p>Once a week</p> <p>Number of seconds: 16</p>
<p>Abbot Kinney Blvd.</p> <p>Number of seconds: 8</p>	<p>Green alleyways</p> <p>Number of seconds: 14</p>	<p>Wilshire Blvd</p> <p>Number of seconds: 4</p>	<p>Once a month</p> <p>Number of seconds: 5</p>
<p>Bike Friendly Fourth St</p> <p>Number of seconds: 6</p>	<p>As a common carriage-way, not a car-only sewer</p> <p>Number of seconds: 11</p>	<p>Venice St.</p> <p>Number of seconds: 3</p>	<p>Everyday</p> <p>Number of seconds: 3</p>

1



# Town Hall

Ideas.LA2B.org

2



# Idea Line

213.935.0385

3



# Think Lab

February 25 & March 3

# 3



# Think Lab

February 25 & March 3

**Saturday, February 25, 2012**

**9:30-11:30 AM**

Van Nuys City Hall  
14410 Sylvan St  
Van Nuys, CA 91401

**1:30-3:30 PM**

LACMA West  
6067 W Wilshire Blvd  
Los Angeles, CA 90036

**Saturday, March 3, 2012**

**9:30-11:30 AM**

La Plaza de Cultura y  
Artes  
501 N Main St  
Los Angeles, CA 90012

**1:30-3:30 PM**

Pacoima Neighborhood  
Constituent Services Center  
13520 W Van Nuys Blvd  
Pacoima, CA 91331

