



April 19, 1996

Los Angeles County
Metropolitan
Transportation
Authority

One Gateway Plaza
Los Angeles, CA
90012
213.922.6000

Mailing Address:
P.O. Box 194
Los Angeles, CA 90053

TO: BOARD OF DIRECTORS
FROM: PATRICIA V. McLAUGHLIN *plm*
SUBJECT: SPECIAL BOARD BRIEFING ON THE
LONG RANGE PLAN UPDATE ON THURSDAY, APRIL 25, 1996

Attached is the presentation package that staff will cover in the first briefing on the Long Range Plan Update. This briefing will be held on Thursday, April 25, 1996 at 2:00 p.m. in the Gateway Plaza Conference Room, which is located on the 3rd floor. The materials cover:

- proposed process and schedule for the Long Range Plan Update,
- an overview of the components included in the 1995 Long Range Plan,
- the Long Range Plan Financial Model, and
- revenue allocations and flexibility.

BACKGROUND

The MTA Board adopted the 20-year Long Range Transportation Plan on March 22, 1995, with a resolution establishing an annual financial review and a formal review and re-adoption of the Long Range Plan every two years. The Long Range Plan Financial Update was submitted to the Board in February 1996.

PROCESS AND SCHEDULE

This report outlines the proposed process and schedule leading to the Long Range Plan re-adoption in March 1997. Orientation briefings are proposed through June 1996. These briefings will be designed to orient the Board to the elements critical for re-adoption of the Long Range Plan. Topics planned for presentation at these briefings include:

- overview of the 1995 Long Range Transportation Plan,
- overview of revenues and the availability of discretionary funds,
- progress to date in achieving the Long Range Plan objectives,
- issues that may impact the Long Range Plan,
- review of the Working Assumptions,
- overview of the Proposed Process, and
- overview of the Financial and Transportation Demand Model

Monthly Board workshops will be held beginning in Summer 1996. Information to be covered in the workshops include:

- Baseline Financial Capacity and the Baseline Update process,
- Review of the Baseline Transportation Demand Model results,
- Planning and Project Evaluation Methodology
- Development of Project Scenarios and Criteria Selection, and
- Review of the results of the revised transportation demand modeling and Baseline Financial Capacity Update process

Staff will present a preliminary recommendation in late Fall 1996. The update process is designed to give opportunities for stakeholder input throughout the process as shown in the attached chart. Staff expects to bring the updated plan to the Board for readoption in March 1997.

Attachment

Prepared by: M.J. West, Manager of Long Range Planning

MJWCA...April 1996 Board Box .doc

MTA LONG RANGE TRANSPORTATION PLAN
**Long Range Plan Update Overview, Financial Model
and Funding Eligibility**



Prepared by:
Los Angeles County Metropolitan Transportation Authority
Office of Planning and Programming

April 25, 1996

MTA Long Range Plan Update

Overview of the MTA Long Range Plan Financial Model

- I. Overview of the Long Range Transportation Plan Process
- II. Review of the Adopted Long Range Transportation Plan Components
- III. MTA Funding Source Eligibility
- IV. Proposed Long Range Transportation Plan Update Schedule for Board Review
- V. Review of the Long Range Transportation Plan Financial Model

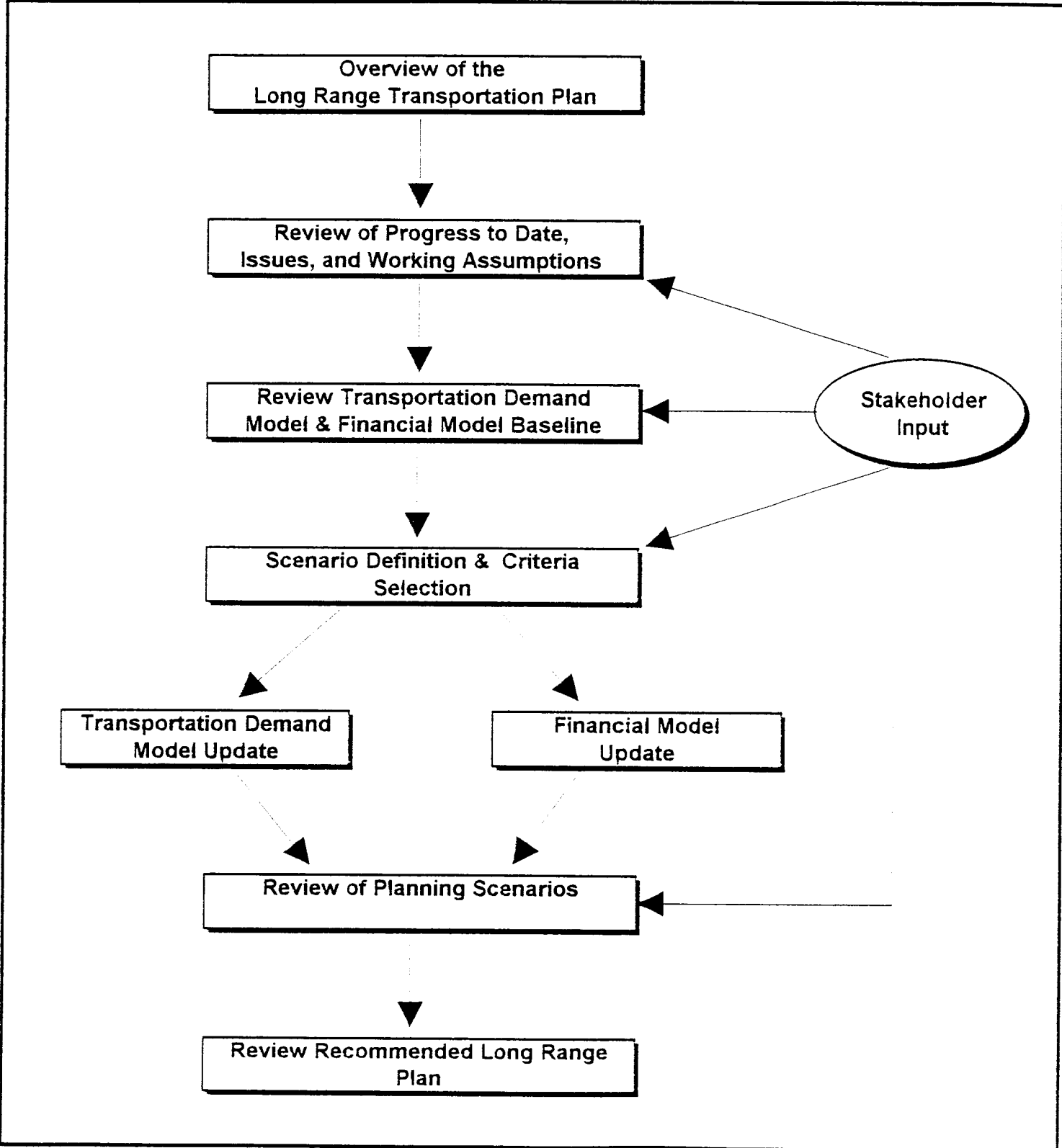
MTA Long Range Plan Update

Process Overview

- The Long Range Transportation Plan was adopted by the Board in March 1995.
- The Board resolved that the Plan should be formally reviewed for readoption every two years and established an annual financial review.
- The Long Range Plan Financial Update was reviewed with the Board of Directors in February 1996.
- The Long Range Plan is scheduled for readoption in March 1997.

MTA Long Range Plan

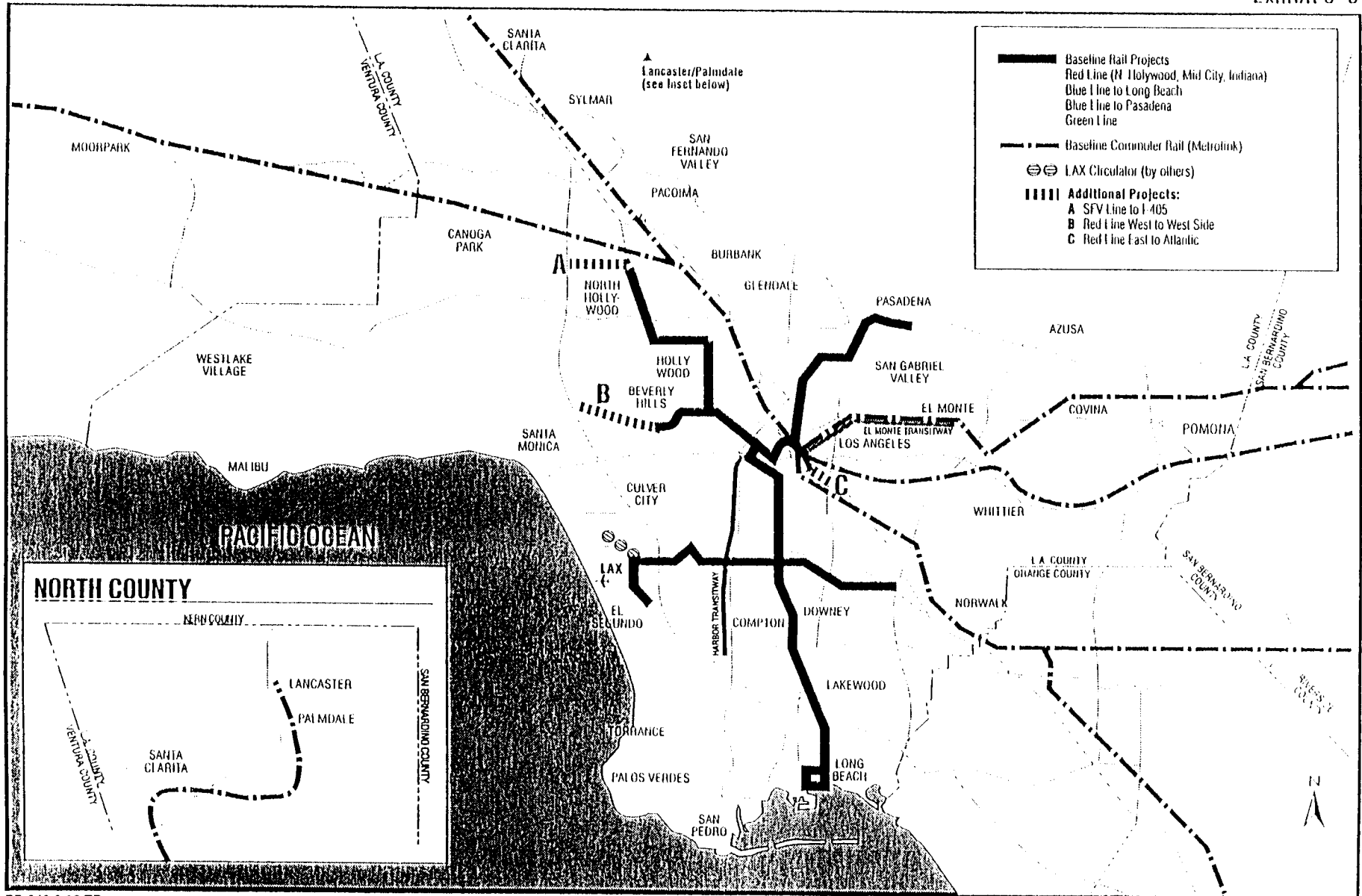
Update Process



MTA Long Range Transportation Plan

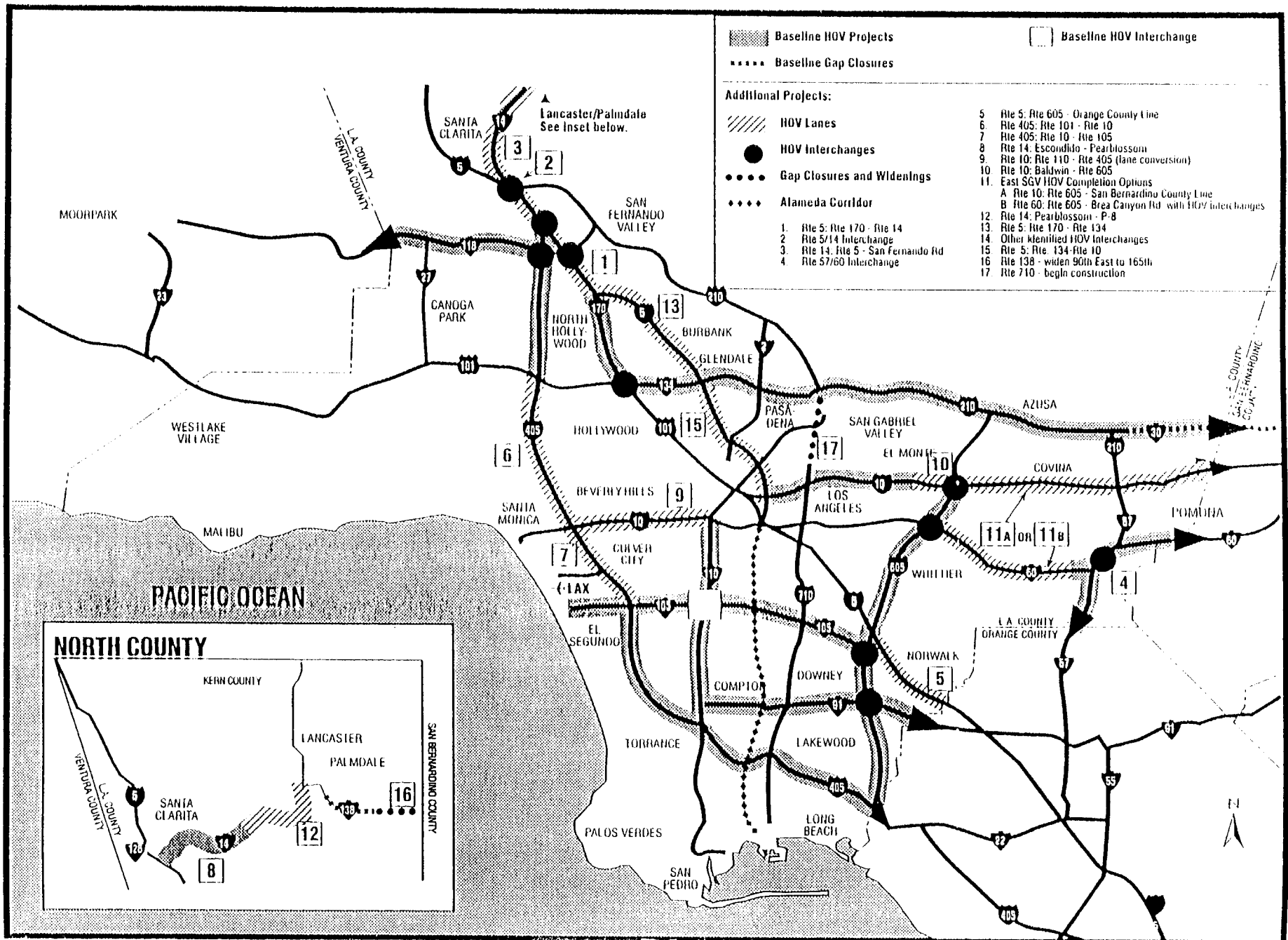
Rail Projects

Exhibit 3-6



51

MTA Long Range Transportation Plan Highway/HOV Projects



MTA Long Range Plan Update

1995 Long Range Plan Components - Key Projects

Bus Program	-	Current System - MTA & Municipal Operators 12-year Replacement Program Bus System Improvements
Rail Program	-	Red Line Segment 1 Red Line Segment 2 Red Line Segment 3 North Hollywood Mid-City Eastern Extension to 1 st and Lorena Blue Line - Long Beach to Los Angeles Pasadena Blue Line Green Line - Norwalk/El Segundo Red Line San Fernando Valley East/West Red Line Western Extension to I-405 Fwy Red Line Eastern Extension to Atlantic
Highway Program	-	HOV Program Transportation Management Center Gap Closures Signal Synchronization & Bus Speed Improvements TDM Projects Regional Surface Transportation Improvement Projects
Intermodal	-	Alameda Corridor
Other	-	Metrolink Access Services Incorporated

MTA Long Range Plan Update

1995 Long Range Plan Components - Key Behavioral Shifts

The Long Range Transportation Plan focused on five behavioral policy shifts that encourage greater reliance on transit and ridesharing. These are as follows:

- || Increase the minimum passenger occupancy for High Occupancy Vehicles from two persons per vehicle to three persons per vehicle.

- || Encourage greater utilization of telecommuting and teleservices.

- || Encourage local implementation of parking management strategies.

- || Focus land development in proximity to transit centers.

- || Encourage consideration of regional market incentives (pricing strategies).

MTA Long Range Plan Update

Overview of the MTA Long Range Plan Financial Model

1. Introduction

- Purpose of the Financial Model
- Role of the Financial Model in the Long Range Planning Process
- What the Financial Model does and does not do
- Types of Assumptions used in the Financial Model

2. Using the Financial Model

- Model Design
- Information Sources for the Financial Model

MTA Funding Source Eligibility-Financial Update

4/17/96

Revenue Sources	Rail		Bus		Highways	TDM
	Capital	Operations	Capital	Operations		
LOCAL REVENUES						
Proposition A						
Proposition A 35%	A	A				
Proposition A 40%			E	A		
Proposition C						
Proposition C 5%	E	A	E	A		
Proposition C 10%	A	A				
Proposition C 25%(1)					A	A
Proposition C 40%	A	A	A	A		
Farebox	E	A	E	A		
Benefit Assessments	A					
Other Local Agency Funds		E	E			
City of Los Angeles	A					
Other (Advertising and Auxillary)				A		
Port & Port User Fees					A	
Local Funds						A
Financing	A		A			
PRIVATE REVENUES						
Private/Joint Venture		E	E	E	E	E
Private (Del Norte Station Project)	A					
CMP Funds		E		E		

MTA Funding Source Eligibility-Financial Update

4/17/96

Revenue Sources	Rail		Bus		Highways	TDM
	Capital	Operations	Capital	Operations		
STATE REVENUES						
TDA Article 4	A	A	A	A		
Flexible Congestion Relief	A				A	
State Rail Bonds	A					
State Transit Assistance (STA)	E	A	E	A		
Transit Capital Improvement (TCI)	A		E ⁽²⁾			
Article XIX	A				E	
State TSM	A		E		A	E
State & Local Partnership					A	
Inter-Regional Roads					A	
Soundwalls					A	
SHOPP					A	
FEDERAL REVENUES						
FTA - Section 3	A		A			
FTA - Section 9	A	E	A	A		
ISTEA - CMAQ	A	A ⁽³⁾	A	A ⁽³⁾	A	A
ISTEA - STP	A		A		A	A
ISTEA - STP Trans Enhance	E		A		A	
Fed. Highway Demo Projects					A	

Notes: A - Revenues allocated to these modes.

E - Eligible for these uses although none allocated.

Local Return is not included in this chart.

1 - Proposition C 25% is eligible for construction of transit ways including bus ways, carpool lanes, and operational and interchange improvements.

2 - Eligible for these uses, excluding rolling stock.

3 - Revenue allocated for first three years of new service.

MTA Long Range Plan Update

Schedule for Board Review

April - June 1996

Board orientation briefings to provide overview of 1995 Plan components, and discussion of Update issues, assumptions, and methodology.

July - September 1996

Workshops to review Baseline transportation and financial modeling results, and development of project scenarios.

Constituent and advisory committee review and comment.

October - December 1996

Workshops to review transportation and financial evaluation results, and review revised planning scenarios and financial capacity results.

Constituent and advisory committee review and comment.

January - March 1997

Review and adopt recommended Long Range Transportation Plan.

Constituent and advisory committee review and comment.

MTA Long Range Plan Update

Preview of the May Briefing

- I. MTA Progress to Date in Achieving Long Range Transportation Plan Objectives

- II. Issues Potentially Impacting the Long Range Transportation Plan

- III. Review of Working Assumptions